

For Research Use Only

# LAP3 Monoclonal antibody

Catalog Number: 66417-1-Ig



## Basic Information

<b>Catalog Number:</b> 66417-1-Ig	<b>GenBank Accession Number:</b> BC065564	<b>Purification Method:</b> Protein G purification
<b>Size:</b> 150ul , Concentration: 1000 µg/ml by Nanodrop and 1000 µg/ml by Bradford method using BSA as the standard;	<b>GeneID (NCBI):</b> 51056	<b>CloneNo.:</b> 1B11B8
<b>Source:</b> Mouse	<b>Full Name:</b> Leucine aminopeptidase 3	<b>Recommended Dilutions:</b> WB 1:1000-1:6000 IHC 1:100-1:400 IF 1:200-1:800
<b>Isotype:</b> IgG1	<b>Calculated MW:</b> 56 kDa	
<b>Immunogen Catalog Number:</b> AG6300	<b>Observed MW:</b> 56 kDa	

## Applications

<b>Tested Applications:</b> IF, IHC, WB, ELISA	<b>Positive Controls:</b>
<b>Species Specificity:</b> human, mouse, rat, pig	<b>WB :</b> NIH/3T3 cells, C2C12 cell, HeLa cells, HepG2 cells
<b>Note-IHC: suggested antigen retrieval with TE buffer pH 9.0; (*) Alternatively, antigen retrieval may be performed with citrate buffer pH 6.0</b>	<b>IHC :</b> human lung tissue,
	<b>IF :</b> HeLa cells,

## Background Information

LAP3 (Leucine aminopeptidase 3) is also named as LAPEP, PEPS (peptidase 5) and belongs to the peptidase M17 family. It can catalyze the removal of unsubstituted N-terminal amino-acids from various peptides and be presumably involved in the processing and regular turnover of intracellular proteins. PEPS is found in a wide variety of tissues and cultured cells but not in red cells and skin. The enzyme can utilize several di-, tri-, and tetrapeptides as substrates and is the slowest migrating of the peptidases after electrophoresis (PMID:689684). LAP3 has two isoforms with MW of 52 and 56 kDa.

## Storage

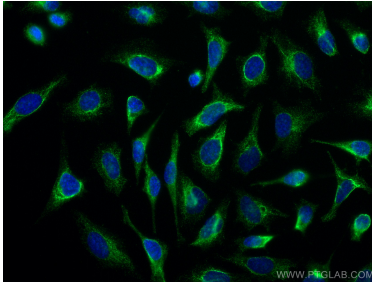
**Storage:**  
Store at -20°C. Stable for one year after shipment.  
**Storage Buffer:**  
PBS with 0.02% sodium azide and 50% glycerol pH 7.3.  
Aliquoting is unnecessary for -20°C storage

\*\*\* 20ul sizes contain 0.1% BSA

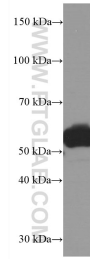
For technical support and original validation data for this product please contact:  
T: 1 (888) 4PTGLAB (1-888-478-4522) (toll free in USA), or 1(312) 455-8498 (outside USA)  
E: proteintech@ptglab.com  
W: ptglab.com

This product is exclusively available under Proteintech Group brand and is not available to purchase from any other manufacturer.

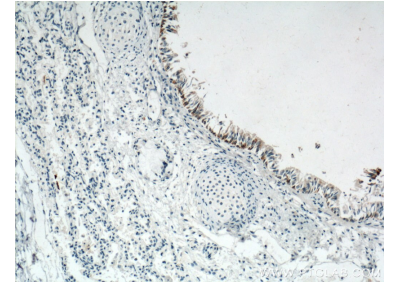
## Selected Validation Data



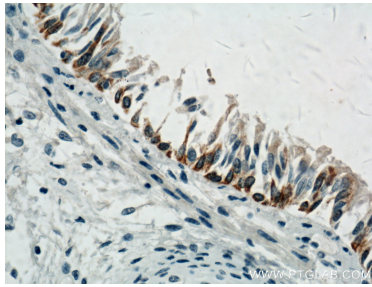
Immunofluorescent analysis of (-20°C Ethanol) fixed HeLa cells using LAP3 antibody (66417-1-Ig, Clone: 1B11B8 ) at dilution of 1:400 and CoraLite®488-Conjugated AffiniPure Goat Anti-Mouse IgG(H+L).



NIH/3T3 cells were subjected to SDS PAGE followed by western blot with 66417-1-Ig (LAP3 Antibody) at dilution of 1:3000 incubated at room temperature for 1.5 hours.



Immunohistochemical analysis of paraffin-embedded human lung tissue slide using 66417-1-Ig (LAP3 Antibody) at dilution of 1:200 (under 10x lens). Heat mediated antigen retrieval with Tris-EDTA buffer (pH 9.0).



Immunohistochemical analysis of paraffin-embedded human lung tissue slide using 66417-1-Ig (LAP3 Antibody) at dilution of 1:200 (under 40x lens). Heat mediated antigen retrieval with Tris-EDTA buffer (pH 9.0).