

For Research Use Only

AGTR1 Monoclonal antibody, PBS Only

Catalog Number: 66415-1-PBS



Basic Information

Catalog Number: 66415-1-PBS	GenBank Accession Number: BC022447	Purification Method: Protein A purification
Size: 100ug, Concentration: 1mg/ml by Nanodrop;	GeneID (NCBI): 185	CloneNo.: 2C5G11
Source: Mouse	UNIPROT ID: P30556	
Isotype: IgG2a	Full Name: angiotensin II receptor, type 1	
Immunogen Catalog Number: AG14461	Calculated MW: 359 aa, 41 kDa	
	Observed MW: 50 kDa	

Applications

Tested Applications:
WB, Indirect ELISA

Species Specificity:
human, mouse, rat, pig

Background Information

Angiotensin II (Ang II), the main effector molecule of the renin-angiotensin system, exerts its actions mainly via interaction with type-1 angiotensin II receptor (AGTR1, also named as AT1R), thereby contributing to blood pressure regulation. AGTR1 mediates its action by association with G proteins that activate a phosphatidylinositol-calcium second messenger system. By regulating vascular tone, cardiovascular function, salt and water homeostasis, AGTR1 exerts an indispensable physiological role (PMID: 21600887). AGTR1 has been implicated in diverse aspects of human disease, from the regulation of blood pressure and cardiovascular homeostasis to cancer progression (PMID: 26975580).

Storage

Storage:
Store at -80°C.

Storage Buffer:
PBS Only

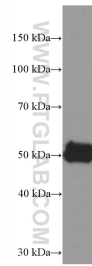
For technical support and original validation data for this product please contact:

T: 1 (888) 4PTGLAB (1-888-478-4522) (toll free in USA), or 1(312) 455-8498 (outside USA)

E: proteintech@ptglab.com
W: ptglab.com

This product is exclusively available under Proteintech Group brand and is not available to purchase from any other manufacturer.

Selected Validation Data



pig heart tissue were subjected to SDS PAGE followed by western blot with 66415-1-Ig (AGTR1 Antibody) at dilution of 1:2000 incubated at room temperature for 1.5 hours. This data was developed using the same antibody clone with 66415-1-PBS in a different storage buffer formulation.