

For Research Use Only

# LDLR Monoclonal antibody, PBS Only



Catalog Number: 66414-1-PBS

Featured Product

## Basic Information

<b>Catalog Number:</b> 66414-1-PBS	<b>GenBank Accession Number:</b> BC014514	<b>Purification Method:</b> Protein A purification
<b>Size:</b> 100ug , Concentration: 1 mg/ml by Nanodrop;	<b>GeneID (NCBI):</b> 3949	<b>CloneNo.:</b> 1A2A3
<b>Source:</b> Mouse	<b>ENSEMBL Gene ID:</b> ENSG00000130164	
<b>Isotype:</b> IgG1	<b>UNIPROT ID:</b> P01130	
<b>Immunogen Catalog Number:</b> AG1236	<b>Full Name:</b> low density lipoprotein receptor	
	<b>Calculated MW:</b> 95 kDa	
	<b>Observed MW:</b> 120 kDa, 160 kDa	

## Applications

**Tested Applications:**  
WB, IHC, ELISA

**Species Specificity:**  
human

## Background Information

LDLR (low density lipoprotein receptor) is a member of the LDL receptor gene family and is involved in receptor-mediated endocytosis of specific ligands. The LDLR is a cell surface glycoprotein that scavenges LDL from the blood and regulates plasma LDL cholesterol. The cytoplasmic domain of the LDL receptor is necessary for the receptor to cluster in coated pits, which promotes the rapid endocytosis of bound LDL. The protein is highly glycosylated through N- and O-linkages and thus migrates at 100 to 160 kDa bands on SDS-PAGE.

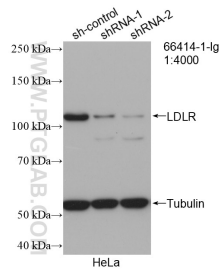
## Storage

**Storage:**  
Store at -80°C.  
**Storage Buffer:**  
PBS only

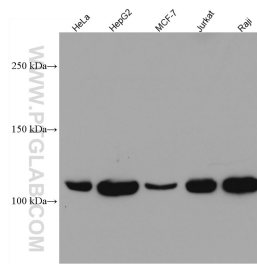
For technical support and original validation data for this product please contact:  
T: 1 (888) 4PTGLAB (1-888-478-4522) (toll free in USA), or 1(312) 455-8498 (outside USA)      E: [proteintech@ptglab.com](mailto:proteintech@ptglab.com)  
W: [ptglab.com](http://ptglab.com)

This product is exclusively available under Proteintech Group brand and is not available to purchase from any other manufacturer.

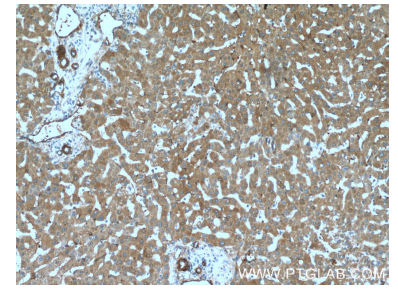
## Selected Validation Data



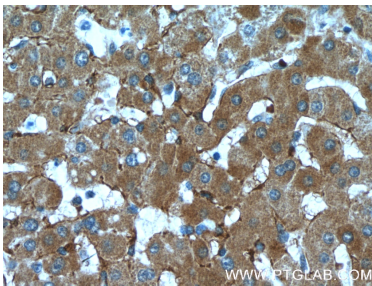
WB result of LDLR antibody (66414-1-Ig; 1:4000; incubated at room temperature for 1.5 hours) with sh-Control and sh-LDLR transfected HeLa cells. This data was developed using the same antibody clone with 66414-1-PBS in a different storage buffer formulation.



Various lysates were subjected to SDS PAGE followed by western blot with 66414-1-Ig (LDLR antibody) at dilution of 1:10000 incubated at room temperature for 1.5 hours. This data was developed using the same antibody clone with 66414-1-PBS in a different storage buffer formulation.



Immunohistochemical analysis of paraffin-embedded human liver tissue slide using 66414-1-Ig (LDLR Antibody) at dilution of 1:400 (under 10x lens). This data was developed using the same antibody clone with 66414-1-PBS in a different storage buffer formulation.



Immunohistochemical analysis of paraffin-embedded human liver tissue slide using 66414-1-Ig (LDLR Antibody) at dilution of 1:400 (under 40x lens). This data was developed using the same antibody clone with 66414-1-PBS in a different storage buffer formulation.