

For Research Use Only

# SOX2 Monoclonal antibody, PBS Only

Catalog Number: 66411-1-PBS

Featured Product



## Basic Information

**Catalog Number:**

66411-1-PBS

**Size:**

100ug, Concentration: 1mg/ml by Nanodrop;

**Source:**

Mouse

**Isotype:**

IgG1

**Immunogen Catalog Number:**

AG13635

**GenBank Accession Number:**

BC013923

**GeneID (NCBI):**

6657

**UNIPROT ID:**

P48431

**Full Name:**

SRY (sex determining region Y)-box 2

**Calculated MW:**

34 kDa

**Observed MW:**

34-40 kDa

**Purification Method:**

Protein G purification

**CloneNo.:**

4B9B10

## Applications

**Tested Applications:**

WB, IHC, IF/ICC, IF-P, FC (Intra), ELISA

**Species Specificity:**

human, mouse, rat, pig

## Background Information

Sox2, also known as SRY (sex determining region Y)-box 2, is a transcription factor essential for maintaining self-renewal of undifferentiated ES cells and is one of the key transcription factors used to reprogram mouse and human fibroblasts to a pluripotent state. Sox2 expressed in undifferentiated pluripotent stem cells and germ cells during development. This antibody is raised against an internal region of human SOX2.

## Storage

**Storage:**

Store at -80°C.

**Storage Buffer:**

PBS Only

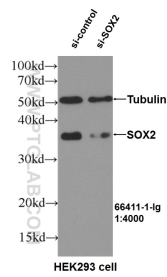
For technical support and original validation data for this product please contact:

T: 1 (888) 4PTGLAB (1-888-478-4522) (toll free in USA), or 1(312) 455-8498 (outside USA)

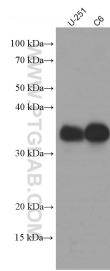
E: [proteintech@ptglab.com](mailto:proteintech@ptglab.com)  
W: [ptglab.com](http://ptglab.com)

This product is exclusively available under Proteintech Group brand and is not available to purchase from any other manufacturer.

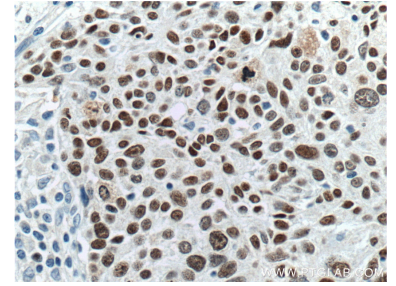
## Selected Validation Data



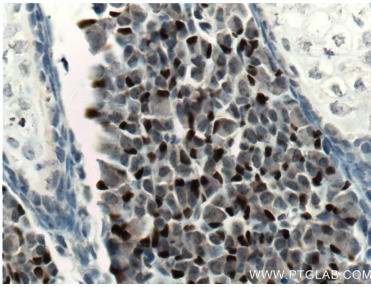
WB result of SOX2 antibody (66411-1-Ig, 1:4000) with si-Control and si-SOX2 transfected HEK293 cells. This data was developed using the same antibody clone with 66411-1-PBS in a different storage buffer formulation.



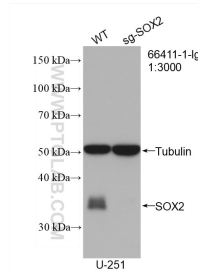
Various lysates were subjected to SDS PAGE followed by western blot with 66411-1-Ig (SOX2 antibody) at dilution of 1:2500 incubated at room temperature for 1.5 hours. This data was developed using the same antibody clone with 66411-1-PBS in a different storage buffer formulation.



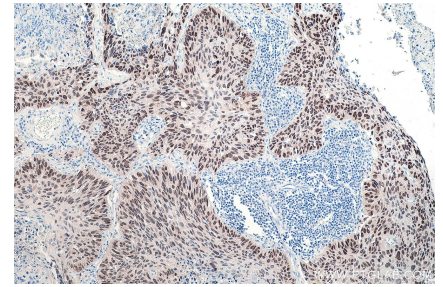
Immunohistochemical analysis of paraffin-embedded human lung cancer tissue slide using 66411-1-Ig (SOX2 Antibody) at dilution of 1:500 (under 40x lens). Heat mediated antigen retrieval with Tris-EDTA buffer (pH 9.0). This data was developed using the same antibody clone with 66411-1-PBS in a different storage buffer formulation.



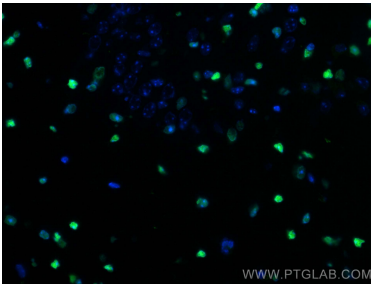
Immunohistochemical analysis of paraffin-embedded mouse embryo tissue slide using 66411-1-Ig (SOX2 Antibody) at dilution of 1:500 (under 40x lens). Heat mediated antigen retrieval with Tris-EDTA buffer (pH 9.0). This data was developed using the same antibody clone with 66411-1-PBS in a different storage buffer formulation.



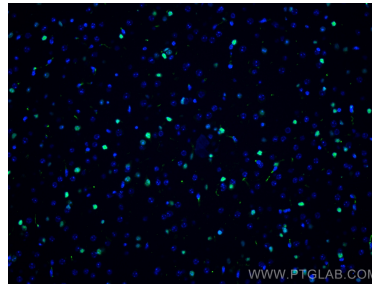
WB result of SOX2 antibody (66411-1-Ig; 1:3000; room temperature for 1.5 hours) with negative control and SOX2 knockout U-251 cells. This data was developed using the same antibody clone with 66411-1-PBS in a different storage buffer formulation.



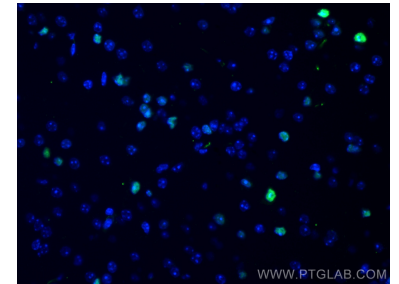
Immunohistochemical analysis of paraffin-embedded human lung cancer tissue slide using 66411-1-Ig (SOX2 antibody) at dilution of 1:8000 (under 10x lens). Heat mediated antigen retrieval with Tris-EDTA buffer (pH 9.0). This data was developed using the same antibody clone with 66411-1-PBS in a different storage buffer formulation.



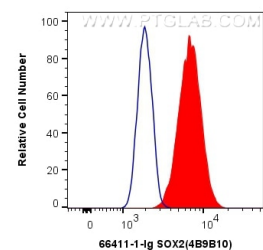
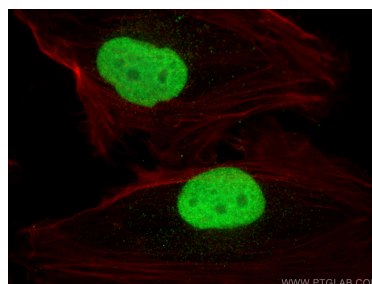
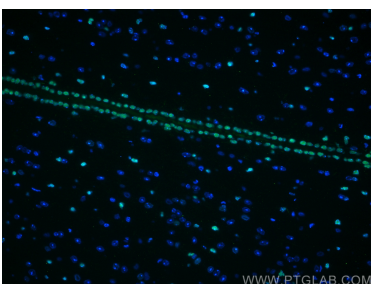
Immunofluorescent analysis of (4% PFA) fixed mouse brain tissue using SOX2 antibody (66411-1-Ig, Clone: 4B9B10) at dilution of 1:400 and CoraLite®488-Conjugated AffiniPure Goat Anti-Mouse IgG(H+L). This data was developed using the same antibody clone with 66411-1-PBS in a different storage buffer formulation.



Immunofluorescent analysis of (4% PFA) fixed mouse brain tissue using SOX2 antibody (66411-1-Ig, Clone: 4B9B10) at dilution of 1:1000 and CoraLite®488-Conjugated AffiniPure Goat Anti-Mouse IgG(H+L). This data was developed using the same antibody clone with 66411-1-PBS in a different storage buffer formulation.



Immunofluorescent analysis of (4% PFA) fixed mouse brain tissue using SOX2 antibody (66411-1-Ig, Clone: 4B9B10) at dilution of 1:1000 and CoraLite®488-Conjugated AffiniPure Goat Anti-Mouse IgG(H+L). This data was developed using the same antibody clone with 66411-1-PBS in a different storage buffer formulation.



Immunofluorescent analysis of (4% PFA) fixed mouse brain tissue using SOX2 antibody (66411-1-Ig, Clone: 4B9B10) at dilution of 1:400 and CoraLite®488-Conjugated AffiniPure Goat Anti-Mouse IgG(H+L). This data was developed using the same antibody clone with 66411-1-PBS in a different storage buffer formulation.

Immunofluorescent analysis of (4% PFA) fixed U-251 cells using SOX2 antibody (66411-1-Ig, Clone: 4B9B10) at dilution of 1:2000 and Multi-rAb CoraLite® Plus 488-Goat Anti-Mouse Recombinant Secondary Antibody (H+L) (RGAM002), CL594-Phalloidin (red). This data was developed using the same antibody clone with 66411-1-PBS in a different storage buffer formulation.

$1 \times 10^6$  U-251 cells were intracellularly stained with 0.5 ug Anti-Human SOX2 (66411-1-Ig, Clone:4B9B10) (red) labeled with FlexAble CoraLite® Plus 555 Antibody Labeling Kit for Mouse IgG1 (KFA022), or 0.5 ug Control Antibody. Cells were fixed and permeabilized with Transcription Factor Staining Buffer Kit (PF00011). This data was developed using the same antibody clone with 66411-1-PBS in a different storage buffer formulation.