

For Research Use Only

# CD80 Monoclonal antibody, PBS Only

Catalog Number: 66406-1-PBS



## Basic Information

<b>Catalog Number:</b> 66406-1-PBS	<b>GenBank Accession Number:</b> BC042665	<b>Purification Method:</b> Protein A purification
<b>Size:</b> 100ug , Concentration: 1mg/ml by Nanodrop;	<b>GeneID (NCBI):</b> 941	<b>CloneNo.:</b> 1E2F10
<b>Source:</b> Mouse	<b>UNIPROT ID:</b> P33681	
<b>Isotype:</b> IgG1	<b>Full Name:</b> CD80 molecule	
<b>Immunogen Catalog Number:</b> AG5615	<b>Calculated MW:</b> 33 kDa	
	<b>Observed MW:</b> 68 kDa	

## Applications

**Tested Applications:**  
WB, ELISA

**Species Specificity:**  
human, mouse, pig

## Background Information

CD80 (also known as B7-1) is a type I membrane protein that is a member of the immunoglobulin superfamily, with an extracellular immunoglobulin constant-like domain and a variable-like domain required for receptor binding. It is expressed on antigen-presenting cells (APCs), including B cells, dendritic cells, monocytes, and macrophages. CD80 is the receptor for the proteins CD28 and CTLA-4 found on the surface of T-cells. It is involved in the costimulatory signal essential for T-lymphocyte activation. T-cell proliferation and cytokine production is induced by the binding of CD28, binding to CTLA-4 has opposite effects and inhibits T-cell activation. CD80 also acts as a cellular attachment receptor for adenovirus subgroup B. (PMID: 7545666; 12015893; 16920215)

## Storage

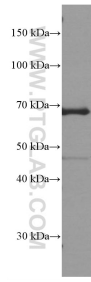
**Storage:**  
Store at -80°C.

**Storage Buffer:**  
PBS Only

For technical support and original validation data for this product please contact:  
T: 1 (888) 4PTGLAB (1-888-478-4522) (toll free in USA), or 1(312) 455-8498 (outside USA)      E: proteintech@ptglab.com  
W: ptglab.com

This product is exclusively available under Proteintech Group brand and is not available to purchase from any other manufacturer.

## Selected Validation Data



Raji cells were subjected to SDS PAGE followed by western blot with 66406-1-Ig (CD80 / B7-1 antibody at dilution of 1:2000 incubated at room temperature for 1.5 hours. This data was developed using the same antibody clone with 66406-1-PBS in a different storage buffer formulation.