

For Research Use Only

# CD80 Monoclonal antibody

Catalog Number: 66406-1-Ig **65 Publications**



## Basic Information

<b>Catalog Number:</b> 66406-1-Ig	<b>GenBank Accession Number:</b> BC042665	<b>Purification Method:</b> Protein A purification
<b>Size:</b> 150ul , Concentration: 1500 ug/ml by Nanodrop;	<b>GeneID (NCBI):</b> 941	<b>CloneNo.:</b> 1E2F10
<b>Source:</b> Mouse	<b>UNIPROT ID:</b> P33681	<b>Recommended Dilutions:</b> WB 1:1000-1:4000
<b>Isotype:</b> IgG1	<b>Full Name:</b> CD80 molecule	
<b>Immunogen Catalog Number:</b> AG5615	<b>Calculated MW:</b> 33 kDa	
	<b>Observed MW:</b> 68 kDa	

## Applications

<b>Tested Applications:</b> WB, ELISA	<b>Positive Controls:</b> WB : Raji cells, DC2.4 cells, Daudi cells
<b>Cited Applications:</b> WB, IF	
<b>Species Specificity:</b> human, mouse, pig	
<b>Cited Species:</b> human, mouse, rat, pig, rabbit	

## Background Information

CD80 (also known as B7-1) is a type I membrane protein that is a member of the immunoglobulin superfamily, with an extracellular immunoglobulin constant-like domain and a variable-like domain required for receptor binding. It is expressed on antigen-presenting cells (APCs), including B cells, dendritic cells, monocytes, and macrophages. CD80 is the receptor for the proteins CD28 and CTLA-4 found on the surface of T-cells. It is involved in the costimulatory signal essential for T-lymphocyte activation. T-cell proliferation and cytokine production is induced by the binding of CD28, binding to CTLA-4 has opposite effects and inhibits T-cell activation. CD80 also acts as a cellular attachment receptor for adenovirus subgroup B. (PMID: 7545666; 12015893; 16920215)

## Notable Publications

Author	Pubmed ID	Journal	Application
Yan Yang	34582523	Biomater Sci	FC
Chenxia Juan	30243953	Int J Biochem Cell Biol	WB
Yuanhang Li	30411299	Pathol Oncol Res	WB

## Storage

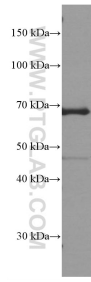
**Storage:**  
Store at -20°C. Stable for one year after shipment.  
**Storage Buffer:**  
PBS with 0.02% sodium azide and 50% glycerol, pH7.3  
Aliquoting is unnecessary for -20°C storage

**\*\*\* 20ul sizes contain 0.1% BSA**

For technical support and original validation data for this product please contact:  
T: 1 (888) 4PTGLAB (1-888-478-4522) (toll free in USA), or 1(312) 455-8498 (outside USA)  
E: proteintech@ptglab.com  
W: ptglab.com

**This product is exclusively available under Proteintech Group brand and is not available to purchase from any other manufacturer.**

## Selected Validation Data



Raji cells were subjected to SDS PAGE followed by western blot with 66406-1-Ig (CD80 / B7-1 antibody at dilution of 1:2000 incubated at room temperature for 1.5 hours.