

For Research Use Only

# Mesothelin Monoclonal antibody, PBS Only

Catalog Number: 66404-1-PBS



## Basic Information

<b>Catalog Number:</b> 66404-1-PBS	<b>GenBank Accession Number:</b> BC003512	<b>Purification Method:</b> Protein G purification
<b>Size:</b> 100ug , Concentration: 1mg/ml by Nanodrop;	<b>GeneID (NCBI):</b> 10232	<b>CloneNo.:</b> 2E3A4
<b>Source:</b> Mouse	<b>UNIPROT ID:</b> Q13421	
<b>Isotype:</b> IgG1	<b>Full Name:</b> mesothelin	
<b>Immunogen Catalog Number:</b> AG23606	<b>Calculated MW:</b> 69 kDa	
	<b>Observed MW:</b> 69 kDa, 40 kDa	

## Applications

**Tested Applications:**  
WB, IHC, Indirect ELISA

**Species Specificity:**  
human

## Background Information

Mesothelin (MSLN) is a 40kDa GPI-anchored surface glycoprotein that is expressed on pleural and peritoneal mesothelial cells, but not in other non-neoplastic tissues. The mesothelin gene encodes a 69-71kDa precursor protein that is processed to a 40kDa membrane-bound protein termed mesothelin and a 31kDa shed fragment called megakaryocyte-potentiating factor (MPF) that is released from the cell. Mesothelin is a tumor differentiation antigen present at low levels on a restricted set of normal adult tissues (e.g. mesothelium), and is expressed at high levels in mesotheliomas, as well as ovarian, pancreatic, and lung cancers. Mesothelin may be a new target for immunotherapy (PMID: 20922056, 18691948, 15217923).

## Storage

**Storage:**  
Store at -80°C.

**Storage Buffer:**  
PBS Only

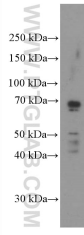
For technical support and original validation data for this product please contact:

T: 1 (888) 4PTGLAB (1-888-478-4522) (toll free in USA), or 1(312) 455-8498 (outside USA)

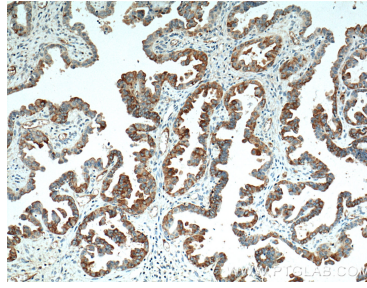
E: [proteintech@ptglab.com](mailto:proteintech@ptglab.com)  
W: [ptglab.com](http://ptglab.com)

**This product is exclusively available under Proteintech Group brand and is not available to purchase from any other manufacturer.**

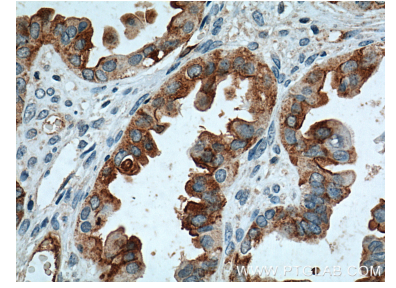
## Selected Validation Data



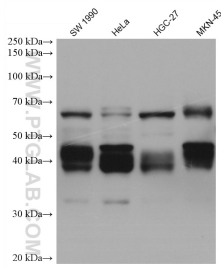
HeLa cells were subjected to SDS PAGE followed by western blot with 66404-1-Ig (Mesothelin antibody) at dilution of 1:1000 incubated at room temperature for 1.5 hours. This data was developed using the same antibody clone with 66404-1-PBS in a different storage buffer formulation.



Immunohistochemical analysis of paraffin-embedded human ovary tumor tissue slide using 66404-1-Ig (Mesothelin antibody) at dilution of 1:200 (under 10x lens. Heat mediated antigen retrieval with Tris-EDTA buffer (pH 9.0). This data was developed using the same antibody clone with 66404-1-PBS in a different storage buffer formulation.



Immunohistochemical analysis of paraffin-embedded human ovary tumor tissue slide using 66404-1-Ig (Mesothelin antibody) at dilution of 1:200 (under 40x lens. Heat mediated antigen retrieval with Tris-EDTA buffer (pH 9.0). This data was developed using the same antibody clone with 66404-1-PBS in a different storage buffer formulation.



Various lysates were subjected to SDS PAGE followed by western blot with 66404-1-Ig (Mesothelin antibody) at dilution of 1:5000 incubated at room temperature for 1.5 hours. This data was developed using the same antibody clone with 66404-1-PBS in a different storage buffer formulation.