

For Research Use Only

PLA2G1B Monoclonal antibody, PBS Only



Catalog Number: 66397-1-PBS

Basic Information

Catalog Number:

66397-1-PBS

Size:

100ug, Concentration: 1mg/ml by Nanodrop;

Source:

Mouse

Isotype:

IgG2a

Immunogen Catalog Number:

AG8812

GenBank Accession Number:

BC005386

GeneID (NCBI):

5319

UNIPROT ID:

P04054

Full Name:

phospholipase A2, group IB (pancreas)

Calculated MW:

70aa,8 kDa; 148aa,16 kDa

Observed MW:

13-16 kDa

Purification Method:

Protein A purification

CloneNo.:

1F2C10

Applications

Tested Applications:

WB, IHC, Indirect ELISA

Species Specificity:

human, pig

Storage

Storage:

Store at -80°C.

Storage Buffer:

PBS Only

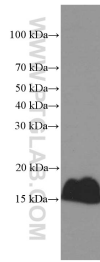
For technical support and original validation data for this product please contact:

T: 1 (888) 4PTGLAB (1-888-478-4522) (toll free in USA), or 1(312) 455-8498 (outside USA)

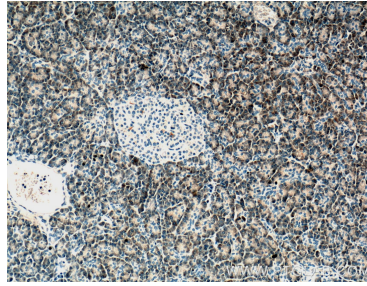
E: proteintech@ptglab.com
W: ptglab.com

This product is exclusively available under Proteintech Group brand and is not available to purchase from any other manufacturer.

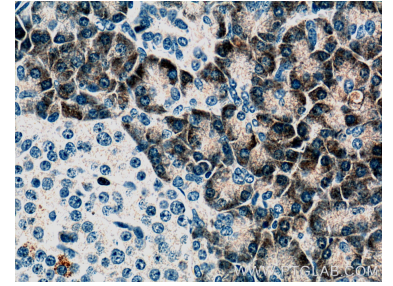
Selected Validation Data



pig pancreas tissue were subjected to SDS PAGE followed by western blot with 66397-1-Ig (PLA2G1B Antibody) at dilution of 1:3000 incubated at room temperature for 1.5 hours. This data was developed using the same antibody clone with 66397-1-PBS in a different storage buffer formulation.



Immunohistochemical analysis of paraffin-embedded human pancreas tissue slide using 66397-1-Ig (PLA2G1B antibody) at dilution of 1:200 (under 10x lens). This data was developed using the same antibody clone with 66397-1-PBS in a different storage buffer formulation.



Immunohistochemical analysis of paraffin-embedded human pancreas tissue slide using 66397-1-Ig (PLA2G1B antibody) at dilution of 1:200 (under 40x lens). This data was developed using the same antibody clone with 66397-1-PBS in a different storage buffer formulation.