

For Research Use Only

Calbindin-D28k Monoclonal antibody, PBS Only



Catalog Number: 66394-1-PBS

Basic Information

| | | |
|--|--|---|
| Catalog Number: 66394-1-PBS | GenBank Accession Number: BC006478 | Purification Method: Protein A purification |
| Size: 100ug , Concentration: 1mg/ml by Nanodrop; | GeneID (NCBI): 793 | CloneNo.: 1F8B9 |
| Source: Mouse | UNIPROT ID: P05937 | |
| Isotype: IgG1 | Full Name: calbindin 1, 28kDa | |
| Immunogen Catalog Number: AG5861 | Calculated MW: 30 kDa | |
| | Observed MW: 28 kDa | |

Applications

Tested Applications:
WB, IHC, IF/ICC, IF-P, IF-Fro, ELISA

Species Specificity:
human, mouse, rat, pig, rabbit

Background Information

Calbindin-D28k is a member of the calcium-binding protein superfamily that includes calmodulin and troponin C. It is a cytosolic calcium binding protein highly expressed in the distal tubule, intestines, central nervous system, primary murine osteoblast cells and in several other organs. It plays an important role in the intracellular calcium homeostasis, its strong buffering capacity prevents cytotoxic effect of high concentration of free calcium in kidney, brain, pancreas, and intestine.

Storage

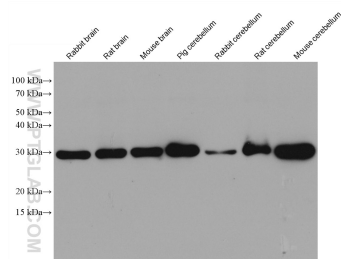
Storage:
Store at -80°C.

Storage Buffer:
PBS Only

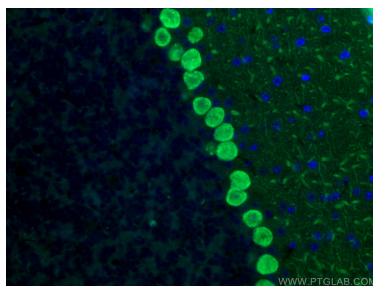
For technical support and original validation data for this product please contact:
T: 1 (888) 4PTGLAB (1-888-478-4522) (toll free in USA), or 1(312) 455-8498 (outside USA)
E: proteintech@ptglab.com
W: ptglab.com

This product is exclusively available under Proteintech Group brand and is not available to purchase from any other manufacturer.

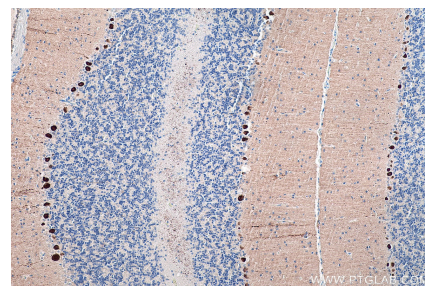
Selected Validation Data



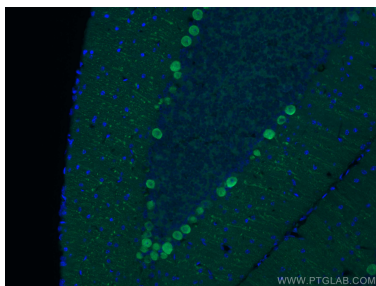
Various lysates were subjected to SDS PAGE followed by western blot with 66394-1-Ig (Calbindin-D28k antibody) at dilution of 1:10000 incubated at room temperature for 1.5 hours. This data was developed using the same antibody clone with 66394-1-PBS in a different storage buffer formulation.



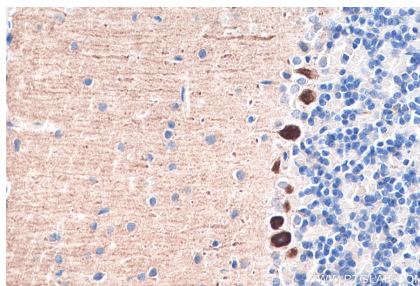
Immunofluorescent analysis of (4% PFA) fixed mouse cerebellum tissue using 66394-1-Ig (Calbindin-D28k antibody) at dilution of 1:200 and CoraLite488-Conjugated AffiniPure Goat Anti-Mouse IgG(H+L). This data was developed using the same antibody clone with 66394-1-PBS in a different storage buffer formulation.



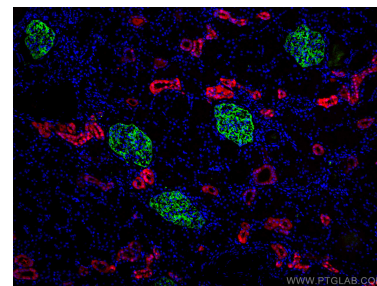
Immunohistochemical analysis of paraffin-embedded rat cerebellum tissue slide using 66394-1-Ig (Calbindin-D28k antibody) at dilution of 1:16000 (under 10x lens). Heat mediated antigen retrieval with Tris-EDTA buffer (pH 9.0). This data was developed using the same antibody clone with 66394-1-PBS in a different storage buffer formulation.



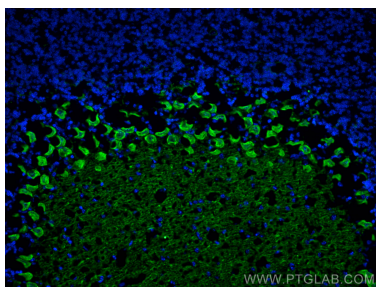
Immunofluorescent analysis of (4% PFA) fixed mouse cerebellum tissue using 66394-1-Ig (Calbindin-D28k antibody) at dilution of 1:200 and CoraLite488-Conjugated AffiniPure Goat Anti-Mouse IgG(H+L). This data was developed using the same antibody clone with 66394-1-PBS in a different storage buffer formulation.



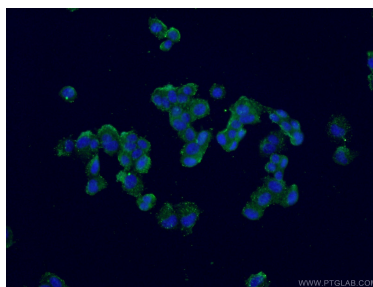
Immunohistochemical analysis of paraffin-embedded rat cerebellum tissue slide using 66394-1-Ig (Calbindin-D28k antibody) at dilution of 1:16000 (under 40x lens). Heat mediated antigen retrieval with Tris-EDTA buffer (pH 9.0). This data was developed using the same antibody clone with 66394-1-PBS in a different storage buffer formulation.



Immunofluorescent analysis of (4% PFA) fixed human kidney tissue using Calbindin-D28k antibody (66394-1-Ig, Clone: 1F8B9) at dilution of 1:300 and CoraLite®594-Conjugated AffiniPure Goat Anti-Mouse IgG(H+L), Podocalyxin antibody(18150-1-AP, green). This data was developed using the same antibody clone with 66394-1-PBS in a different storage buffer formulation.



Immunofluorescent analysis of (4% PFA) fixed frozen OCT-embedded mouse cerebellum tissue using Calbindin-D28k antibody (66394-1-Ig, Clone: 1F8B9) at dilution of 1:800 and CoraLite®488-Conjugated AffiniPure Goat Anti-Mouse IgG(H+L) (SA00013-1). This data was developed using the same antibody clone with 66394-1-PBS in a different storage buffer formulation.



Immunofluorescent analysis of (-20°C Ethanol) fixed PC-12 cells using 66394-1-Ig (Calbindin-D28k antibody) at dilution of 1:100 and Alexa Fluor 488-conjugated AffiniPure Goat Anti-Mouse IgG(H+L). This data was developed using the same antibody clone with 66394-1-PBS in a different storage buffer formulation.