

For Research Use Only

FKBPL Monoclonal antibody, PBS Only



Catalog Number: 66389-1-PBS

Basic Information

Catalog Number: 66389-1-PBS	GenBank Accession Number: BC004168	Purification Method: Protein A purification
Size: 100ug , Concentration: 1 mg/ml by Nanodrop;	GeneID (NCBI): 63943	CloneNo.: 2H10B10
Source: Mouse	UNIPROT ID: Q9UIM3	
Isotype: IgG1	Full Name: FK506 binding protein like	
Immunogen Catalog Number: AG0112	Calculated MW: 349 aa, 38 kDa	
	Observed MW: 42 kDa	

Applications

Tested Applications:
WB, IHC, IF/ICC, FC (Intra), Indirect ELISA

Species Specificity:
human, mouse, rat

Background Information

FKBPL, also named as DIR1, NG7 and WISp39, has similarity to the immunophilin protein family, which plays a role in immunoregulation and basic cellular processes involving protein folding and trafficking. FKBPL levels may be a prognostic indicator and determinant of response to endocrine therapy (PMID:20103631, 15664193). It can be detected the band between 38 kDa and 48 kDa by western blot.

Storage

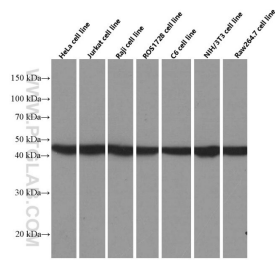
Storage:
Store at -80°C.

Storage Buffer:
PBS Only

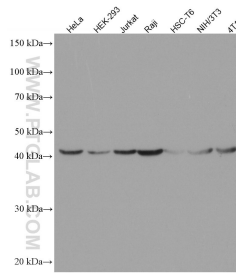
For technical support and original validation data for this product please contact:
T: 1 (888) 4PTGLAB (1-888-478-4522) (toll free in USA), or 1(312) 455-8498 (outside USA) E: proteintech@ptglab.com
W: ptglab.com

This product is exclusively available under Proteintech Group brand and is not available to purchase from any other manufacturer.

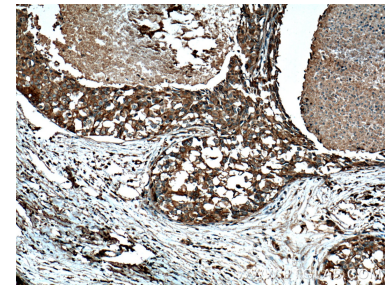
Selected Validation Data



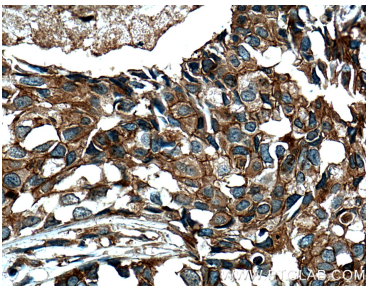
Western blot analysis of FKBP1-specific in various cell lines using Proteintech antibody 66389-1-Ig at dilution of 1:4000 incubated at room temperature for 1.5 hours. This data was developed using the same antibody clone with 66389-1-PBS in a different storage buffer formulation.



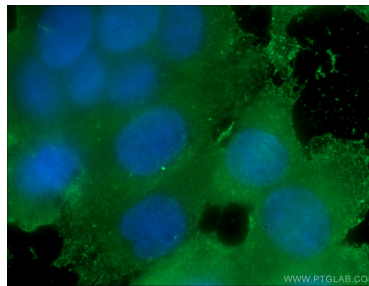
Various lysates were subjected to SDS PAGE followed by western blot with 66389-1-Ig (FKBP1 antibody) at dilution of 1:10000 incubated at room temperature for 1.5 hours. This data was developed using the same antibody clone with 66389-1-PBS in a different storage buffer formulation.



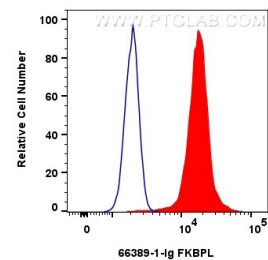
Immunohistochemical analysis of paraffin-embedded human breast cancer tissue slide using 66389-1-Ig (FKBP1 Antibody) at dilution of 1:200 (under 10x lens). Heat mediated antigen retrieval with Tris-EDTA buffer (pH 9.0). This data was developed using the same antibody clone with 66389-1-PBS in a different storage buffer formulation.



Immunohistochemical analysis of paraffin-embedded human breast cancer tissue slide using 66389-1-Ig (FKBP1 Antibody) at dilution of 1:200 (under 40x lens). Heat mediated antigen retrieval with Tris-EDTA buffer (pH 9.0). This data was developed using the same antibody clone with 66389-1-PBS in a different storage buffer formulation.



Immunofluorescent analysis of (-20°C Ethanol) fixed MCF-7 cells using 66389-1-Ig (FKBP1 antibody) at dilution of 1:100 and Alexa Fluor 488-Conjugated AffiniPure Goat Anti-Mouse IgG(H+L). This data was developed using the same antibody clone with 66389-1-PBS in a different storage buffer formulation.



1x10⁶ HeLa cells were intracellularly stained with 0.4 ug FKBP1 Monoclonal antibody (66389-1-Ig, Clone:2H10B10) and CoraLite@488-Conjugated AffiniPure Goat Anti-Mouse IgG(H+L) (SA00013-1)(red), or 0.4 ug Mouse IgG1 Isotype Control (MOPC-21) (65124-1-Ig, Clone: MOPC-21) (blue). Cells were fixed with 4% PFA and permeabilized with Flow Cytometry Perm Buffer (PF00011-C). This data was developed using the same antibody clone with 66389-1-PBS in a

