

For Research Use Only

PADI2 Monoclonal antibody, PBS Only (Capture)

Catalog Number: 66386-1-PBS

Featured Product



Basic Information

Catalog Number:

66386-1-PBS

Size:

100ug, Concentration: 1mg/ml by Nanodrop;

Source:

Mouse

Isotype:

IgG2b

Immunogen Catalog Number:

AG17612

GenBank Accession Number:

BC009701

GeneID (NCBI):

11240

UNIPROT ID:

Q9Y2J8

Full Name:

peptidyl arginine deiminase, type II

Calculated MW:

665 aa, 75 kDa

Observed MW:

75 kDa

Purification Method:

Protein A purification

CloneNo.:

2D8C12

Applications

Tested Applications:

WB, IHC, IF-P, Cytometric bead array, Indirect ELISA

Species Specificity:

human, mouse, rat, pig, rabbit

Product Information

66386-1-PBS targets PADI2 as part of a matched antibody pair:

MP50376-2: 66386-1-PBS capture and 66386-3-PBS detection (validated in Cytometric bead array)

Unconjugated mouse monoclonal antibody pair in PBS only (BSA and azide free) storage buffer at a concentration of 1 mg/mL, ready for conjugation.

This conjugation ready format makes antibodies ideal for use in many applications including: ELISAs, multiplex assays requiring matched pairs, mass cytometry, and multiplex imaging applications. Antibody use should be optimized by the end user for each application and assay.

Background Information

PADI2, also named as KIAA0994, PDI2, PAD-H19 and PAD2 (Peptidylarginine deiminase II), belongs to the protein arginine deiminase family. It catalyzes the deimination of arginine residues of proteins. PADI2 may play a regulatory role in the expression of lactation related genes via histone citrullination during diestrus (PMID:20668670). PADI2 has two isoforms with MW 75 kDa and 49 kDa.

Storage

Storage:

Store at -80°C.

Storage Buffer:

PBS Only

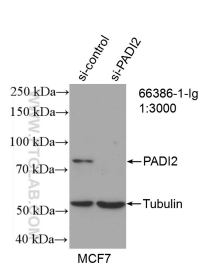
For technical support and original validation data for this product please contact:

T: 1 (888) 4PTGLAB (1-888-478-4522) (toll free in USA), or 1(312) 455-8498 (outside USA)

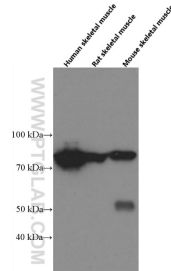
E: proteintech@ptglab.com
W: ptglab.com

This product is exclusively available under Proteintech Group brand and is not available to purchase from any other manufacturer.

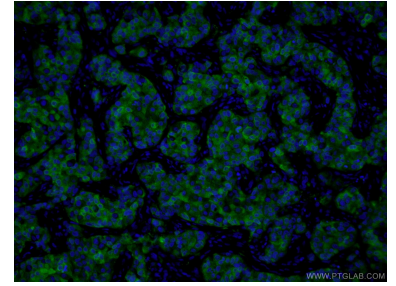
Selected Validation Data



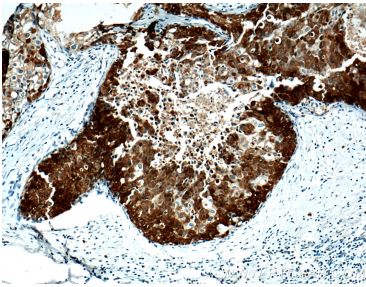
WB result of PADI2 antibody (66386-1-Ig; 1:3000; incubated at room temperature for 1.5 hours) with sh-Control and sh-PADI2 transfected MCF-7 cells. This data was developed using the same antibody clone with 66386-1-PBS in a different storage buffer formulation.



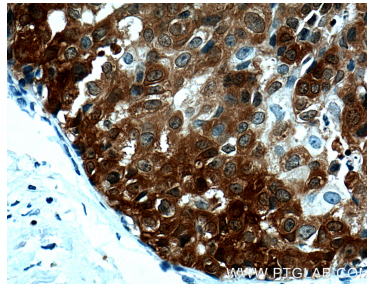
human skeletal muscle tissue, rat skeletal muscle tissue, mouse skeletal muscle tissue were subjected to SDS PAGE followed by western blot with 66386-1-Ig (PADI2 Antibody) at dilution of 1:3000 incubated at room temperature for 1.5 hours. This data was developed using the same antibody clone with 66386-1-PBS in a different storage buffer formulation.



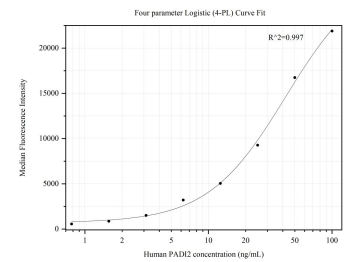
Immunofluorescent analysis of (4% PFA) fixed human breast cancer tissue using 66386-1-Ig (PADI2 antibody) at dilution of 1:100 and Alexa Fluor 488-Conjugated AffiniPure Goat Anti-Mouse IgG(H+L). This data was developed using the same antibody clone with 66386-1-PBS in a different storage buffer formulation.



Immunohistochemical analysis of paraffin-embedded human breast cancer tissue slide using 66386-1-Ig (PADI2 Antibody) at dilution of 1:200 (under 10x lens). Heat mediated antigen retrieval with Tris-EDTA buffer (pH 9.0). This data was developed using the same antibody clone with 66386-1-PBS in a different storage buffer formulation.



Immunohistochemical analysis of paraffin-embedded human breast cancer tissue slide using 66386-1-Ig (PADI2 Antibody) at dilution of 1:200 (under 40x lens). Heat mediated antigen retrieval with Tris-EDTA buffer (pH 9.0). This data was developed using the same antibody clone with 66386-1-PBS in a different storage buffer formulation.



Cytometric bead array standard curve of MP50376-2, PADI2 Monoclonal Matched Antibody Pair, PBS Only. Capture antibody: 66386-1-PBS. Detection antibody: 66386-3-PBS. Standard: Ag17612. Range: 0.781-100 ng/mL