

For Research Use Only

# NAMPT/PBEF Monoclonal antibody, PBS Only



Catalog Number: 66385-1-PBS

Featured Product

## Basic Information

Catalog Number:

66385-1-PBS

Size:

100ug, Concentration: 1 mg/ml by  
Nanodrop;

Source:

Mouse

Isotype:

IgG2b

Immunogen Catalog Number:

AG2434

GenBank Accession Number:

BC020691

GeneID (NCBI):

10135

UNIPROT ID:

P43490

Full Name:

nicotinamide  
phosphoribosyltransferase

Calculated MW:

52 kDa

Observed MW:

52 kDa

Purification Method:

Protein A purification

CloneNo.:

3D4D8

## Applications

Tested Applications:

WB, IF, IHC, Indirect ELISA

Species Specificity:

human, mouse, rat

## Background Information

Nicotinamide phosphoribosyltransferase (NAMPT) has two usual synonyms termed Visfatin and PBEF. Its primary role is to catalyze the condensation of nicotinamide with 5-phosphoribosyl-1-pyrophosphate to yield nicotinamide mononucleotide, an intermediate in the biosynthesis of NAD, which is the rate limiting component in the mammalian NAD biosynthesis pathway. NAMPT is localized in cytoplasm and expressed in large amounts in bone marrow, liver tissue, and muscle tissues. NAMPT inhibits neutrophil apoptosis in experimental inflammation and clinical sepsis. NAMPT levels are altered in plasma of patients with type 2 diabetes mellitus (T2DM), and it is now evidenced that NAMPT may play a role in lipid metabolism.

## Storage

Storage:

Store at -80°C.

Storage Buffer:

PBS Only

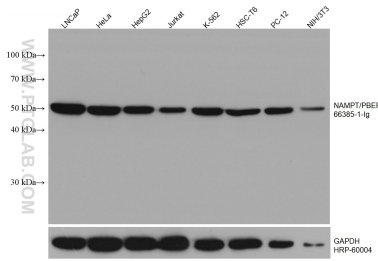
For technical support and original validation data for this product please contact:

T: 1 (888) 4PTGLAB (1-888-478-4522) (toll free  
in USA), or 1(312) 455-8498 (outside USA)

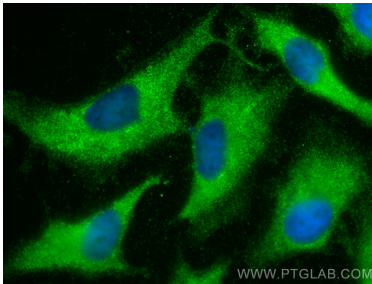
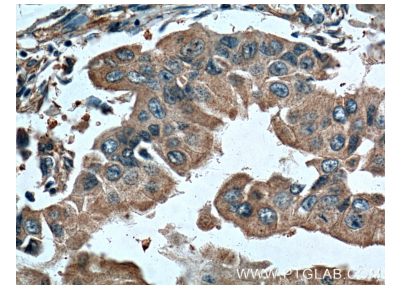
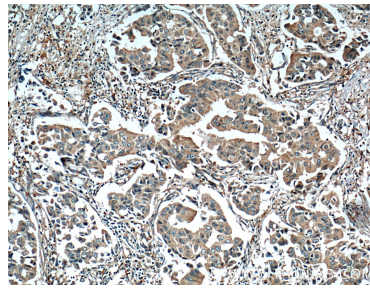
E: [proteintech@ptglab.com](mailto:proteintech@ptglab.com)  
W: [ptglab.com](http://ptglab.com)

This product is exclusively available under Proteintech Group brand and is not available to purchase from any other manufacturer.

## Selected Validation Data



Various lysates were subjected to SDS PAGE followed by western blot with 66385-1-Ig (NAMPT/PBEF antibody) at dilution of 1:20000 incubated at room temperature for 1.5 hours. The membrane was stripped and reblotted with HRP-conjugated GAPDH Monoclonal antibody (HRP-60004) as loading control. This data was developed using the same antibody clone with 66385-1-PBS in a different storage buffer formulation.



Immunofluorescent analysis of (-20°C Methanol) fixed HeLa cells using NAMPT/PBEF antibody (66385-1-Ig, Clone: 3D4D8) at dilution of 1:400 and CoraLite@488-Conjugated AffiniPure Goat Anti-Mouse IgG(H+L). This data was developed using the same antibody clone with 66385-1-PBS in a different storage buffer formulation.