

For Research Use Only

# BMP2 Monoclonal antibody, PBS Only

Catalog Number: 66383-1-PBS



## Basic Information

<b>Catalog Number:</b> 66383-1-PBS	<b>GenBank Accession Number:</b> BC069214	<b>Purification Method:</b> Protein A purification
<b>Size:</b> 100ug , Concentration: 1mg/ml by Nanodrop;	<b>GeneID (NCBI):</b> 650	<b>CloneNo.:</b> 1C5C2
<b>Source:</b> Mouse	<b>UNIPROT ID:</b> P12643	
<b>Isotype:</b> IgG2a	<b>Full Name:</b> bone morphogenetic protein 2	
<b>Immunogen Catalog Number:</b> AG13501	<b>Calculated MW:</b> 396 aa, 44 kDa	
	<b>Observed MW:</b> 45 kDa	

## Applications

**Tested Applications:**  
WB, IHC, Indirect ELISA

**Species Specificity:**  
human, pig

## Background Information

Bone morphogenetic protein-2 (BMP-2) is a member of the transforming growth factor-beta (TGFB) superfamily. BMP2 is synthesized as a 60 kDa precursor that is processed in the secretory pathway to a small 18 kDa monomer; 2 monomers then associate to form the active 30 kDa homodimer, which binds to its receptor. There is also a 40-45 kDa form of BMP2, as an amino-terminal propeptide. BMP2 can induce bone formation and regeneration during early embryonic development. It is involved in the hedgehog pathway, TGF beta signaling pathway, and cytokine-cytokine receptor interaction. Two band isoforms of BMP2 are present (PMID: 35846837).

## Storage

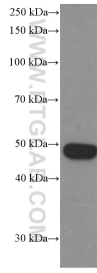
**Storage:**  
Store at -80°C.

**Storage Buffer:**  
PBS Only

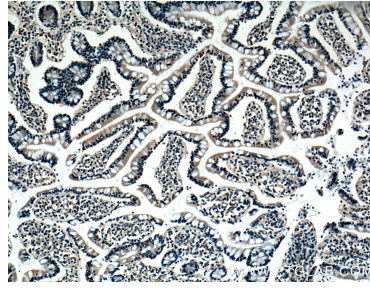
For technical support and original validation data for this product please contact:  
T: 1 (888) 4PTGLAB (1-888-478-4522) (toll free in USA), or 1(312) 455-8498 (outside USA)      E: [proteintech@ptglab.com](mailto:proteintech@ptglab.com)  
W: [ptglab.com](http://ptglab.com)

**This product is exclusively available under Proteintech Group brand and is not available to purchase from any other manufacturer.**

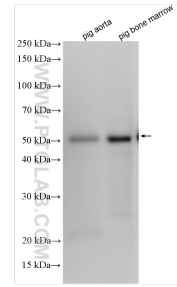
## Selected Validation Data



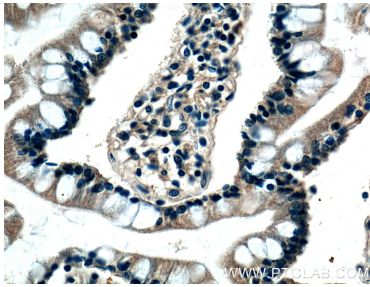
pig bone marrow tissue were subjected to SDS PAGE followed by western blot with 66383-1-Ig (BMP2 Antibody) at dilution of 1:2000 incubated at room temperature for 1.5 hours. This data was developed using the same antibody clone with 66383-1-PBS in a different storage buffer formulation.



Immunohistochemical analysis of paraffin-embedded human small intestine tissue slide using 66383-1-Ig (BMP2 Antibody) at dilution of 1:200 (under 10x lens). This data was developed using the same antibody clone with 66383-1-PBS in a different storage buffer formulation.



Various lysates were subjected to SDS PAGE followed by western blot with 66383-1-Ig (BMP2 antibody) at dilution of 1:600 incubated at room temperature for 1.5 hours. This data was developed using the same antibody clone with 66383-1-PBS in a different storage buffer formulation.



Immunohistochemical analysis of paraffin-embedded human small intestine tissue slide using 66383-1-Ig (BMP2 Antibody) at dilution of 1:200 (under 40x lens). This data was developed using the same antibody clone with 66383-1-PBS in a different storage buffer formulation.