

## BMP2 Monoclonal antibody

Catalog Number: 66383-1-Ig

37 Publications

## Basic Information

<b>Catalog Number:</b> 66383-1-Ig	<b>GenBank Accession Number:</b> BC069214	<b>Purification Method:</b> Protein A purification
<b>Size:</b> 150ul , Concentration: 1400 µg/ml by Nanodrop and 1000 µg/ml by Bradford method using BSA as the standard;	<b>GeneID (NCBI):</b> 650	<b>CloneNo.:</b> 1C5C2
<b>Source:</b> Mouse	<b>Full Name:</b> bone morphogenetic protein 2	<b>Recommended Dilutions:</b> WB 1:1000-1:4000 IHC 1:50-1:500
<b>Isotype:</b> IgG2a	<b>Calculated MW:</b> 396 aa, 44 kDa	
<b>Immunogen Catalog Number:</b> AG13501	<b>Observed MW:</b> 45 kDa	

## Applications

<b>Tested Applications:</b> IHC, WB, ELISA	<b>Positive Controls:</b>
<b>Cited Applications:</b> Cell treatment, IF, IHC, WB	<b>WB :</b> pig bone marrow tissue, Caco-2 cells, HeLa cells
<b>Species Specificity:</b> human, pig	<b>IHC :</b> human small intestine tissue,
<b>Cited Species:</b> human, rat, mouse	
<b>Note-IHC: suggested antigen retrieval with TE buffer pH 9.0; (*) Alternatively, antigen retrieval may be performed with citrate buffer pH 6.0</b>	

## Background Information

Bone morphogenetic protein-2 (BMP-2) is a member of the transforming growth factor-beta (TGFβ) superfamily. BMP2 is synthesized as a 60 kDa precursor that is processed in the secretory pathway to a small 18 kDa monomer; 2 monomers then associate to form the active 30 kDa homodimer, which binds to its receptor. There is also a 40-45 kDa form of BMP2, as an amino-terminal propeptide. BMP2 can induce bone formation and regeneration during early embryonic development. It is involved in the hedgehog pathway, TGF beta signaling pathway, and cytokine-cytokine receptor interaction.

## Notable Publications

Author	Pubmed ID	Journal	Application
Hao Li	36123318	Phytother Res	WB
Xiangchang Cao	31493249	J Bone Miner Metab	WB, IHC
Xiaojing Chen	36356468	Biomater Adv	WB

## Storage

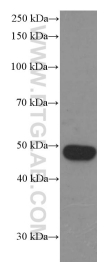
**Storage:**  
Store at -20°C. Stable for one year after shipment.  
**Storage Buffer:**  
PBS with 0.02% sodium azide and 50% glycerol pH 7.3.  
 Aliquoting is unnecessary for -20°C storage

\*\*\* 20ul sizes contain 0.1% BSA

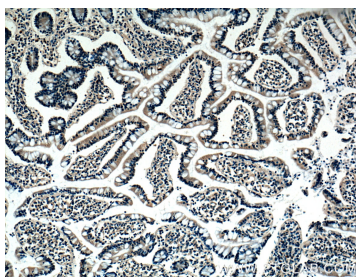
For technical support and original validation data for this product please contact:  
 T: 1 (888) 4PTGLAB (1-888-478-4522) (toll free in USA), or 1(312) 455-8498 (outside USA)  
 E: [proteintech@ptglab.com](mailto:proteintech@ptglab.com)  
 W: [ptglab.com](http://ptglab.com)

This product is exclusively available under Proteintech Group brand and is not available to purchase from any other manufacturer.

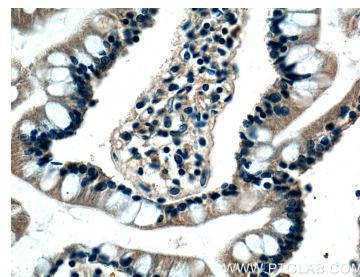
## Selected Validation Data



pig bone marrow tissue were subjected to SDS PAGE followed by western blot with 66383-1-Ig (BMP2 Antibody) at dilution of 1:2000 incubated at room temperature for 1.5 hours.



Immunohistochemical analysis of paraffin-embedded human small intestine tissue slide using 66383-1-Ig (BMP2 Antibody) at dilution of 1:200 (under 10x lens).



Immunohistochemical analysis of paraffin-embedded human small intestine tissue slide using 66383-1-Ig (BMP2 Antibody) at dilution of 1:200 (under 40x lens).