

For Research Use Only

TINP1 Monoclonal antibody, PBS Only

Catalog Number: 66374-1-PBS



Basic Information

Catalog Number: 66374-1-PBS	GenBank Accession Number: BC005288	Purification Method: Protein G purification
Size: 100ug, Concentration: 1 mg/ml by Nanodrop;	GeneID (NCBI): 10412	CloneNo.: 1E3B11
Source: Mouse	UNIPROT ID: O95478	
Isotype: IgG1	Full Name: TGF beta-inducible nuclear protein 1	
Immunogen Catalog Number: AG8822	Calculated MW: 260 aa, 30 kDa	
	Observed MW: 34 kDa	

Applications

Tested Applications:
WB, IHC, IF/ICC, Indirect ELISA

Species Specificity:
human

Background Information

TINP1 (TGF beta inducible nuclear protein 1) was widely expressed in various cell lines. TINP1 overexpression significantly promoted tumor cell proliferation, which may be associated with the downregulation of p53 expression. Furthermore, TINP1 promoted a number of cell lines to the S phase of the cell cycle. TINP1 promotes cell proliferation and significantly reduces p53 and p21 expression.

Storage

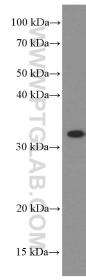
Storage:
Store at -80°C.

Storage Buffer:
PBS Only

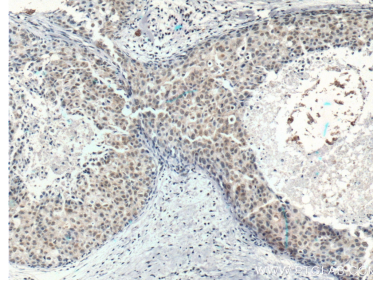
For technical support and original validation data for this product please contact:
T: 1 (888) 4PTGLAB (1-888-478-4522) (toll free in USA), or 1(312) 455-8498 (outside USA) E: proteintech@ptglab.com
W: ptglab.com

This product is exclusively available under Proteintech Group brand and is not available to purchase from any other manufacturer.

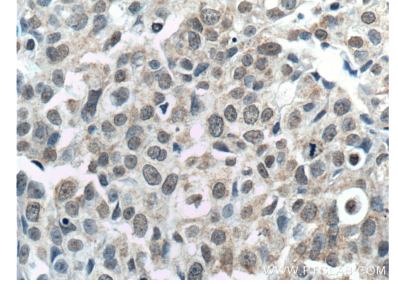
Selected Validation Data



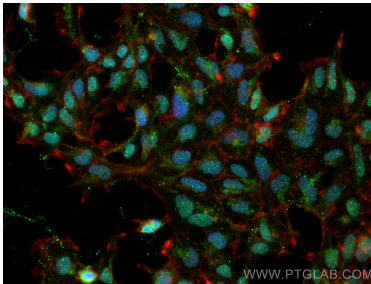
L20 cells were subjected to SDS PAGE followed by western blot with 66374-1-Ig (TINP1 Antibody) at dilution of 1:4000 incubated at room temperature for 1.5 hours. This data was developed using the same antibody clone with 66374-1-PBS in a different storage buffer formulation.



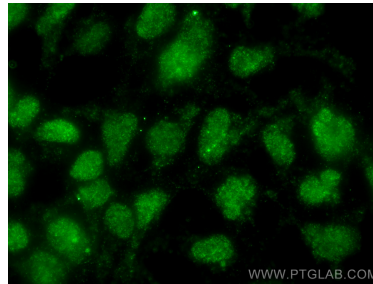
Immunohistochemical analysis of paraffin-embedded human breast cancer tissue slide using 66374-1-Ig (TINP1 Antibody) at dilution of 1:200 (under 10x lens). Heat mediated antigen retrieval with Tris-EDTA buffer (pH 9.0). This data was developed using the same antibody clone with 66374-1-PBS in a different storage buffer formulation.



Immunohistochemical analysis of paraffin-embedded human breast cancer tissue slide using 66374-1-Ig (TINP1 Antibody) at dilution of 1:200 (under 40x lens). Heat mediated antigen retrieval with Tris-EDTA buffer (pH 9.0). This data was developed using the same antibody clone with 66374-1-PBS in a different storage buffer formulation.



Immunofluorescent analysis of (4% PFA) fixed HEK-293 cells using TINP1 antibody (66374-1-Ig, Clone: 1E3B11) at dilution of 1:400 and CoraLite@488-Conjugated Goat Anti-Mouse IgG(H+L). This data was developed using the same antibody clone with 66374-1-PBS in a different storage buffer formulation.



Immunofluorescent analysis of (4% PFA) fixed HEK-293 cells using TINP1 antibody (66374-1-Ig, Clone: 1E3B11) at dilution of 1:400 and CoraLite@488-Conjugated Goat Anti-Mouse IgG(H+L). This data was developed using the same antibody clone with 66374-1-PBS in a different storage buffer formulation.