

For Research Use Only

Tubulin Beta Class V Monoclonal antibody, PBS Only



Catalog Number: 66362-1-PBS

Basic Information

Catalog Number:

66362-1-PBS

Size:

100ug, Concentration: 1 mg/ml by Nanodrop;

Source:

Mouse

Isotype:

IgG1

GenBank Accession Number:

NM_032525

GeneID (NCBI):

84617

Full Name:

tubulin, beta 6

Calculated MW:

50 kDa

Observed MW:

50 kDa

Purification Method:

Protein G purification

CloneNo.:

1D7B9

Applications

Tested Applications:

WB, IF, IHC, Indirect ELISA

Species Specificity:

human, mouse, Canine

Background Information

Tubulin beta class V, encoded by TUBB6, is an isotype of beta tubulin, the major component of microtubule. It is widely expressed in many tissues. In normal tissues, tubulin beta class V is focally expressed in ciliary structure, while in cancer tissues it exhibited a diffuse staining pattern. The alterations of its expression in tumors suggest tubulin beta class V may be used as a biomarker for some solid tumors.

Storage

Storage:

Store at -80°C.

Storage Buffer:

PBS Only

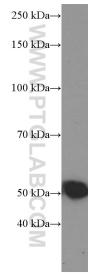
For technical support and original validation data for this product please contact:

T: 1 (888) 4PTGLAB (1-888-478-4522) (toll free in USA), or 1(312) 455-8498 (outside USA)

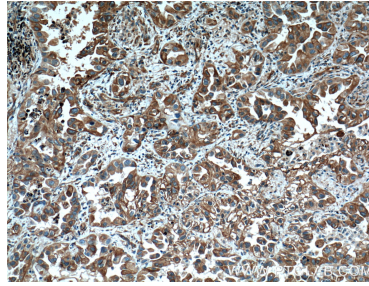
E: proteintech@ptglab.com
W: ptglab.com

This product is exclusively available under Proteintech Group brand and is not available to purchase from any other manufacturer.

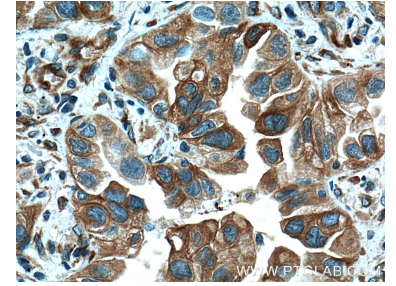
Selected Validation Data



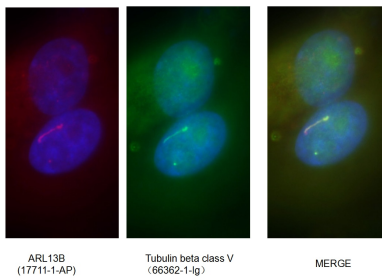
HeLa cells were subjected to SDS PAGE followed by western blot with 66362-1-Ig (Tubulin beta class V Antibody) at dilution of 1:1000 incubated at room temperature for 1.5 hours. This data was developed using the same antibody clone with 66362-1-PBS in a different storage buffer formulation.



Immunohistochemical analysis of paraffin-embedded human lung cancer tissue slide using 66362-1-Ig (Tubulin beta class V Antibody) at dilution of 1:200 (under 10x lens). Heat mediated antigen retrieval with Tris-EDTA buffer (pH 9.0). This data was developed using the same antibody clone with 66362-1-PBS in a different storage buffer formulation.



Immunohistochemical analysis of paraffin-embedded human lung cancer tissue slide using 66362-1-Ig (Tubulin beta class V Antibody) at dilution of 1:200 (under 40x lens). Heat mediated antigen retrieval with Tris-EDTA buffer (pH 9.0). This data was developed using the same antibody clone with 66362-1-PBS in a different storage buffer formulation.



Immunofluorescent analysis of (4% PFA) fixed MDCK cells using 66362-1-Ig(Tubulin beta class V antibody) at dilution of 1:100 and Alexa Fluor 488-conjugated AffiniPure Goat Anti-Mouse IgG(H+L). This data was developed using the same antibody clone with 66362-1-PBS in a different storage buffer formulation.