

For Research Use Only

# Mouse IgG2a isotype control Monoclonal antibody

Catalog Number: 66360-2-Ig **5 Publications**



## Basic Information

Catalog Number:

66360-2-Ig

Size:

150ul , Concentration: 1000 ug/ml by  
Nanodrop;

Source:

Mouse

Isotype:

IgG2a

GenBank Accession Number:

GeneID (NCBI):

Full Name:

Purification Method:

Protein A purification

CloneNo.:

11A1B2

Recommended Dilutions:

WB 1:500-1:2000

## Applications

Tested Applications:

WB, FC, ELISA

Cited Applications:

FC, IP

Species Specificity:

megathura crenulata

Positive Controls:

WB: ,

## Background Information

This antibody is used as the isotype control of mouse IgG2a. It can be used as the isotype control in Flow Cytometry, Immuno-Precipitation and other experiments. The immunogen of this antibody is Keyhole Limpet Hemocyanin (KLH).

## Notable Publications

Author	Pubmed ID	Journal	Application
Milan Hluchý	36104565	Nature	IP
Lei Wang	34218177	Biosens Bioelectron	FC
Hiroki Satomura	39863284	J Vasc Interv Radiol	

## Storage

Storage:

Store at -20°C. Stable for one year after shipment.

Storage Buffer:

PBS with 0.02% sodium azide and 50% glycerol, pH7.3

Aliquoting is unnecessary for -20°C storage

**\*\*\* 20ul sizes contain 0.1% BSA**

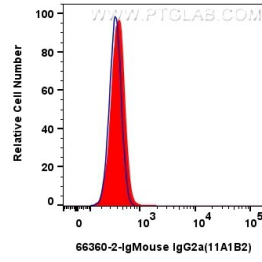
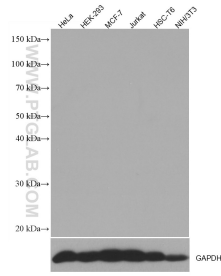
For technical support and original validation data for this product please contact:

T: 1 (888) 4PTGLAB (1-888-478-4522) (toll free  
in USA), or 1(312) 455-8498 (outside USA)

E: [proteintech@ptglab.com](mailto:proteintech@ptglab.com)  
W: [ptglab.com](http://ptglab.com)

**This product is exclusively available under Proteintech Group brand and is not available to purchase from any other manufacturer.**

## Selected Validation Data



Various lysates (50  $\mu$ g/lane) were subjected to SDS PAGE followed by western blot with 66360-2-Ig (Mouse IgG2a isotype control antibody) at dilution of 1:1000 incubated at room temperature for 1.5 hours.

$1 \times 10^6$  human PBMCs were surface stained with 0.5  $\mu$ g Mouse IgG2a isotype control Monoclonal antibody (66360-2-Ig, Clone:11A1B2) and CoraLite<sup>®</sup>488-Conjugated Goat Anti-Mouse IgG(H+L) (SA00013-1) (red), or unstained (blue). Cells were not fixed.