

For Research Use Only

# Annexin A1 Monoclonal antibody, PBS Only (Detector)

Catalog Number: 66344-1-PBS

Featured Product



## Basic Information

<b>Catalog Number:</b> 66344-1-PBS	<b>GenBank Accession Number:</b> BC001275	<b>Purification Method:</b> Protein A purification
<b>Size:</b> 100ug, Concentration: 1mg/ml by Nanodrop;	<b>GeneID (NCBI):</b> 301	<b>CloneNo.:</b> 1E1B7
<b>Source:</b> Mouse	<b>UNIPROT ID:</b> P04083	
<b>Isotype:</b> IgG1	<b>Full Name:</b> annexin A1	
<b>Immunogen Catalog Number:</b> AG17273	<b>Calculated MW:</b> 346 aa, 39 kDa	
	<b>Observed MW:</b> 35 kDa	

## Applications

**Tested Applications:**  
WB, IHC, IF/ICC, FC (Intra), Cytometric bead array, Indirect ELISA

**Species Specificity:**  
human, mouse, rat

## Product Information

66344-1-PBS targets Annexin A1 as part of a matched antibody pair:

MP51130-1: 66344-2-PBS capture and 66344-1-PBS detection (validated in Cytometric bead array)

Unconjugated mouse monoclonal antibody pair in PBS only (BSA and azide free) storage buffer at a concentration of 1 mg/mL, ready for conjugation.

This conjugation ready format makes antibodies ideal for use in many applications including: ELISAs, multiplex assays requiring matched pairs, mass cytometry, and multiplex imaging applications. Antibody use should be optimized by the end user for each application and assay.

## Background Information

ANXA1, also named as ANX1, LPC1 and p35, belongs to the annexin family. It is a member of the annexin family of Ca<sup>2+</sup>-binding and phospholipid binding proteins, and it is particularly abundant in various populations of peripheral blood leukocytes. ANXA1 regulates phospholipase A2 activity. It seems to bind from two to four calcium ions with high affinity. ANXA1 is a pleiotropic protein produced by many cell types including peripheral blood leukocytes.

## Storage

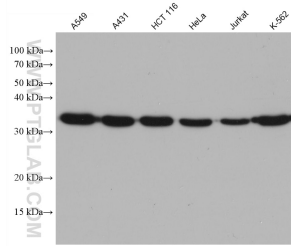
**Storage:**  
Store at -80°C.

**Storage Buffer:**  
PBS Only

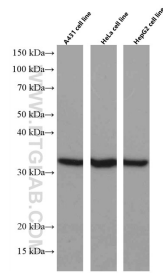
For technical support and original validation data for this product please contact:  
T: 1 (888) 4PTGLAB (1-888-478-4522) (toll free in USA), or 1(312) 455-8498 (outside USA)      E: proteintech@ptglab.com  
W: ptglab.com

This product is exclusively available under Proteintech Group brand and is not available to purchase from any other manufacturer.

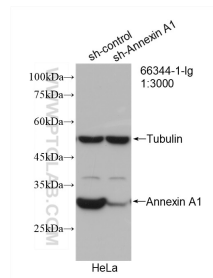
## Selected Validation Data



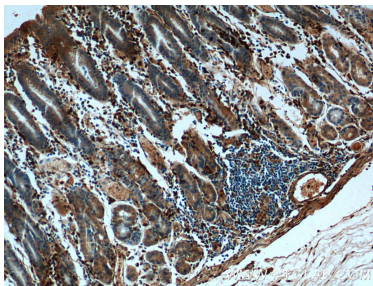
Various lysates were subjected to SDS PAGE followed by western blot with 66344-1-Ig (Annexin A1 antibody) at dilution of 1:20000 incubated at room temperature for 1.5 hours. This data was developed using the same antibody clone with 66344-1-PBS in a different storage buffer formulation.



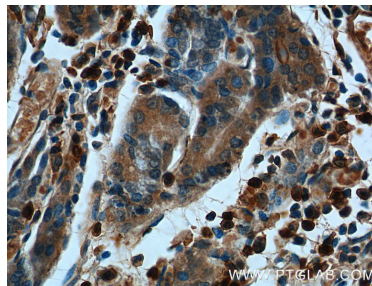
Various lysates were subjected to SDS PAGE followed by western blot with 66344-1-Ig (Annexin A1 antibody) at dilution of 1:5000 incubated at room temperature for 1.5 hours. This data was developed using the same antibody clone with 66344-1-PBS in a different storage buffer formulation.



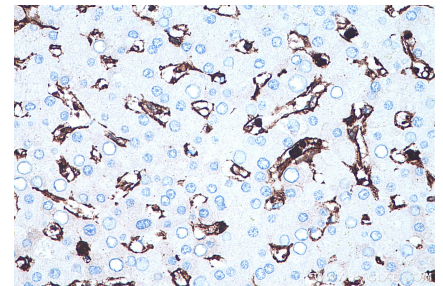
WB result of Annexin A1 antibody (66344-1-Ig; 1:3000; incubated at room temperature for 1.5 hours) with sh-Control and sh-Annexin A1 transfected HeLa cells. This data was developed using the same antibody clone with 66344-1-PBS in a different storage buffer formulation.



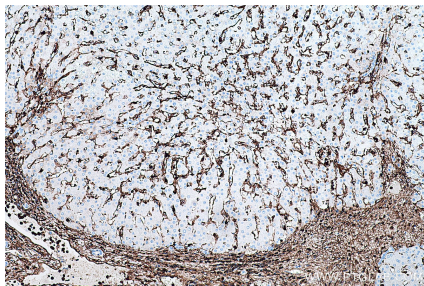
Immunohistochemical analysis of paraffin-embedded human stomach tissue slide using 66344-1-Ig (Annexin A1 antibody at dilution of 1:200 (under 10x lens). This data was developed using the same antibody clone with 66344-1-PBS in a different storage buffer formulation.



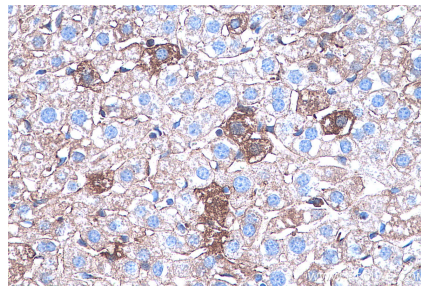
Immunohistochemical analysis of paraffin-embedded human stomach tissue slide using 66344-1-Ig (Annexin A1 antibody at dilution of 1:200 (under 40x lens). This data was developed using the same antibody clone with 66344-1-PBS in a different storage buffer formulation.



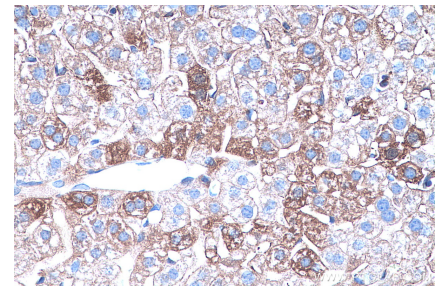
Immunohistochemical analysis of paraffin-embedded human liver tissue slide using 66344-1-Ig (Annexin A1 antibody) at dilution of 1:16000 (under 40x lens). Heat mediated antigen retrieval with Tris-EDTA buffer (pH 9.0). This data was developed using the same antibody clone with 66344-1-PBS in a different storage buffer formulation.



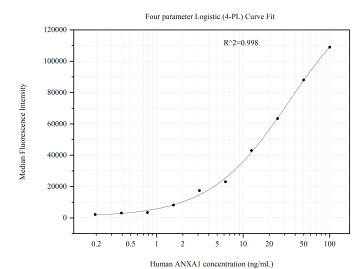
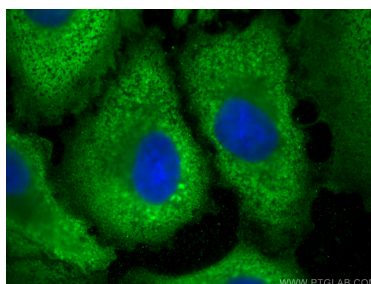
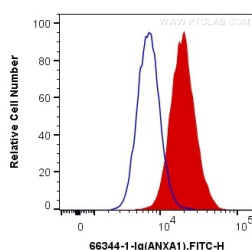
Immunohistochemical analysis of paraffin-embedded human liver tissue slide using 66344-1-Ig (Annexin A1 antibody) at dilution of 1:16000 (under 10x lens). Heat mediated antigen retrieval with Tris-EDTA buffer (pH 9.0). This data was developed using the same antibody clone with 66344-1-PBS in a different storage buffer formulation.



Immunohistochemical analysis of paraffin-embedded mouse liver tissue slide using 66344-1-Ig (Annexin A1 antibody) at dilution of 1:16000 (under 40x lens). Heat mediated antigen retrieval with Tris-EDTA buffer (pH 9.0). This data was developed using the same antibody clone with 66344-1-PBS in a different storage buffer formulation.



Immunohistochemical analysis of paraffin-embedded mouse liver tissue slide using 66344-1-Ig (Annexin A1 antibody) at dilution of 1:16000 (under 40x lens). Heat mediated antigen retrieval with Tris-EDTA buffer (pH 9.0). This data was developed using the same antibody clone with 66344-1-PBS in a different storage buffer formulation.



1X10<sup>6</sup> K-562 cells were intracellularly stained with 0.8 ug Anti-Human Annexin A1 (66344-1-Ig, Clone:1E1B7) and CoraLite®488-Conjugated AffiniPure Goat Anti-Mouse IgG(H+L) at dilution 1:1000 (red), or 0.8 ug Mouse IgG1 Isotype Control (66360-1-Ig, Clone: T1F8D3F10) (blue). Cells were fixed with 4% PFA and permeabilized with Flow Cytometry Perm Buffer (PF00011-C). This data was developed using the same antibody clone with 66344-1-PBS in a



Immunofluorescent analysis of (-20°C Methanol) fixed A549 cells using Annexin A1 antibody (66344-1-Ig, Clone: 1E1B7 ) at dilution of 1:800 and Multi-rAb CoraLite ® Plus 488-Goat Anti-Mouse Recombinant Secondary Antibody (H+L) (RGAM002). This data was developed using the same antibody clone with 66344-1-PBS in a different storage buffer formulation.

Cytometric bead array standard curve of MP51130-1, ANXA1 Monoclonal Matched Antibody Pair, PBS Only. Capture antibody: 66344-2-PBS. Detection antibody: 66344-1-PBS. Standard:Ag17273. Range: 0.195-100 ng/mL.