

For Research Use Only

# CLIC4 Monoclonal antibody

Catalog Number: 66343-1-Ig

Featured Product

1 Publications



## Basic Information

<b>Catalog Number:</b> 66343-1-Ig	<b>GenBank Accession Number:</b> BC012444	<b>Purification Method:</b> Protein G purification
<b>Size:</b> 150ul , Concentration: 2000 µg/ml by Nanodrop and 1000 µg/ml by Bradford method using BSA as the standard;	<b>GeneID (NCBI):</b> 25932	<b>CloneNo.:</b> 1B7F9
<b>Source:</b> Mouse	<b>UNIPROT ID:</b> Q9Y696	<b>Recommended Dilutions:</b> WB 1:5000-1:50000 IHC 1:50-1:500 IF/ICC 1:1000-1:4000
<b>Isotype:</b> IgG1	<b>Full Name:</b> chloride intracellular channel 4	
<b>Immunogen Catalog Number:</b> AG2942	<b>Calculated MW:</b> 253 aa, 29 kDa	
	<b>Observed MW:</b> 29 kDa	

## Applications

**Tested Applications:**  
WB, IHC, IF/ICC, FC (Intra), ELISA

**Cited Applications:**  
WB, IF

**Species Specificity:**  
human, rat, pig

**Cited Species:**  
rat

**Note-IHC: suggested antigen retrieval with TE buffer pH 9.0; (\*) Alternatively, antigen retrieval may be performed with citrate buffer pH 6.0**

**Positive Controls:**

**WB :** HuH-7 cells, pig heart tissue, HeLa cells, U2Os cells, pig kidney tissue, rabbit kidney tissue, rat kidney tissue, mouse kidney tissue, rat brain tissue, mouse brain tissue

**IHC :** human heart tissue, human kidney tissue

**IF/ICC :** HeLa cells,

## Background Information

Chloride channels are a diverse group of proteins that regulate fundamental cellular processes including stabilization of cell membrane potential, transepithelial transport, maintenance of intracellular pH, and regulation of cell volume. CLIC4 is a p53- and tumor necrosis factor alpha-regulated cytoplasmic and mitochondrial protein that belongs to the CLIC family of intracellular chloride channels. CLICs have actions distinct from traditional cell membrane chloride channels, including formation of ion channels in intracellular organelles and roles in membrane trafficking, apoptosis, and cell differentiation.

## Notable Publications

Author	Pubmed ID	Journal	Application
Songhan Li	35498125	Oxid Med Cell Longev	WB,IF

## Storage

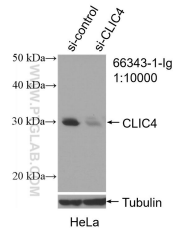
**Storage:**  
Store at -20°C. Stable for one year after shipment.  
**Storage Buffer:**  
PBS with 0.02% sodium azide and 50% glycerol pH 7.3.  
Aliquoting is unnecessary for -20°C storage

\*\*\* 20ul sizes contain 0.1% BSA

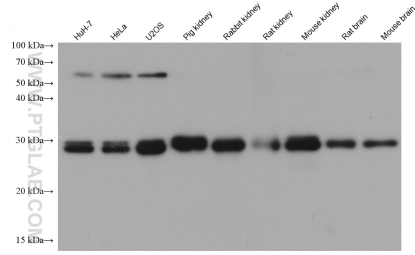
For technical support and original validation data for this product please contact:  
T: 1 (888) 4PTGLAB (1-888-478-4522) (toll free in USA), or 1(312) 455-8498 (outside USA)  
E: proteintech@ptglab.com  
W: ptglab.com

This product is exclusively available under Proteintech Group brand and is not available to purchase from any other manufacturer.

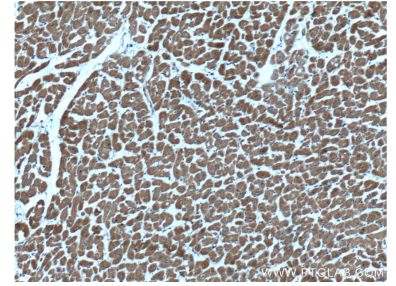
## Selected Validation Data



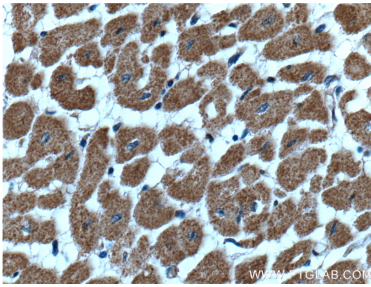
WB result of CLIC4 antibody (66343-1-Ig; 1:10000); incubated at room temperature for 1.5 hours) with sh-Control and sh-CLIC4 transfected HeLa cells.



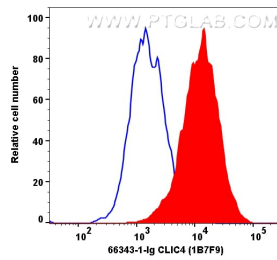
Various lysates were subjected to SDS PAGE followed by western blot with 66343-1-Ig (CLIC4 antibody) at dilution of 1:20000 incubated at room temperature for 1.5 hours.



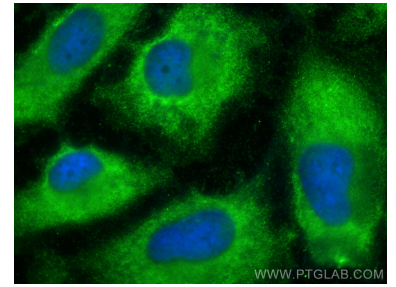
Immunohistochemical analysis of paraffin-embedded human heart tissue slide using 66343-1-Ig (CLIC4 Antibody) at dilution of 1:200 (under 10x lens).



Immunohistochemical analysis of paraffin-embedded human heart tissue slide using 66343-1-Ig (CLIC4 Antibody) at dilution of 1:200 (under 40x lens).



$1 \times 10^6$  BT-549 cells were intracellularly stained with 0.2  $\mu$ g CLIC4 Monoclonal antibody (66343-1-Ig, Clone: 1B7F9) and CoraLite® Plus 647-Goat Anti-Mouse Recombinant Secondary Antibody (H+L) (Cat.NO.RGAM005). Mouse IgG1 isotype control (66360-1-Ig, Clone: 1F8D3, blue) was parallel stained as control. Cells were fixed with 4% PFA.



Immunofluorescent analysis of (-20°C Ethanol) fixed HeLa cells using CLIC4 antibody (66343-1-Ig, Clone: 1B7F9) at dilution of 1:2000 and CoraLite® 488-Conjugated Goat Anti-Mouse IgG(H+L) (SA00013-1).