

For Research Use Only

# MMP3 Monoclonal antibody, PBS Only

Catalog Number: 66338-1-PBS

Featured Product



## Basic Information

**Catalog Number:**

66338-1-PBS

**Size:**

100ug, Concentration: 1mg/ml by Nanodrop;

**Source:**

Mouse

**Isotype:**

IgG1

**Immunogen Catalog Number:**

AG12359

**GenBank Accession Number:**

BC074869

**GeneID (NCBI):**

4314

**UNIPROT ID:**

P08254

**Full Name:**

matrix metalloproteinase 3 (stromelysin 1, progelatinase)

**Calculated MW:**

477 aa, 54 kDa

**Observed MW:**

45-60 kDa

**Purification Method:**

Protein A purification

**CloneNo.:**

1F5A9

## Applications

**Tested Applications:**

WB, IHC, IF/ICC, Indirect ELISA

**Species Specificity:**

human, mouse, rat, pig

## Background Information

Matrix metalloproteinases (MMPs) play a critically important role in extracellular matrix remodeling and have been implicated in a number of key normal and pathologic processes. These proteases have come to represent important therapeutic and diagnostic targets for the treatment and detection of human cancers. MMP-3 activate procollagenase via two pathways: slow direct activation and rapid activation in conjunction with tissue or plasma proteinases. The pro-MMP3 (60 kDa) and the active MMP3 (47 kDa) can be detected through western blot.

## Storage

**Storage:**

Store at -80°C.

**Storage Buffer:**

PBS Only

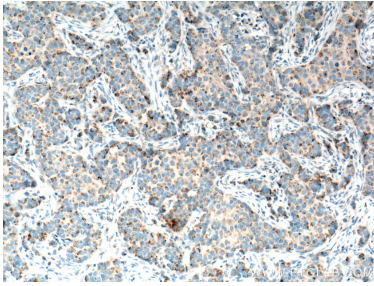
For technical support and original validation data for this product please contact:

T: 1 (888) 4PTGLAB (1-888-478-4522) (toll free in USA), or 1(312) 455-8498 (outside USA)

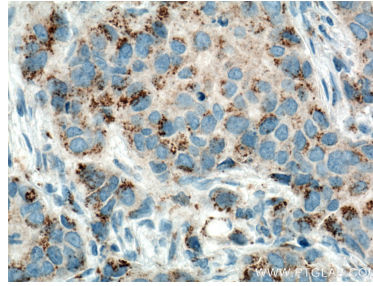
E: [proteintech@ptglab.com](mailto:proteintech@ptglab.com)  
W: [ptglab.com](http://ptglab.com)

This product is exclusively available under Proteintech Group brand and is not available to purchase from any other manufacturer.

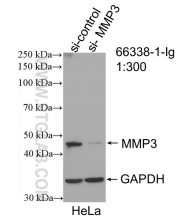
## Selected Validation Data



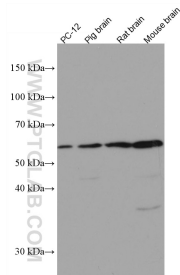
Immunohistochemical analysis of paraffin-embedded human breast cancer tissue slide using 66338-1-Ig (MMP3 antibody) at dilution of 1:4000 (under 10x lens). Heat mediated antigen retrieval with Tris-EDTA buffer (pH 9.0). This data was developed using the same antibody clone with 66338-1-PBS in a different storage buffer formulation.



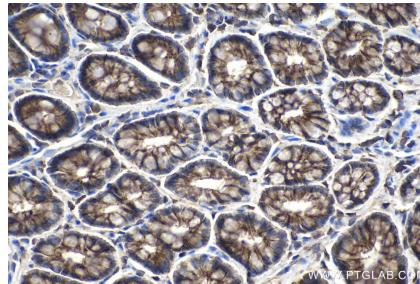
Immunohistochemical analysis of paraffin-embedded human breast cancer tissue slide using 66338-1-Ig (MMP3 antibody) at dilution of 1:4000 (under 40x lens). Heat mediated antigen retrieval with Tris-EDTA buffer (pH 9.0). This data was developed using the same antibody clone with 66338-1-PBS in a different storage buffer formulation.



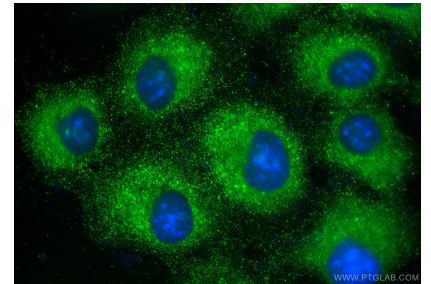
WB result of MMP3 antibody (66338-1-Ig; 1:300; incubated at room temperature for 1.5 hours) with sh-Control and sh-MMP3 transfected HeLa cells. This data was developed using the same antibody clone with 66338-1-PBS in a different storage buffer formulation.



Various lysates were subjected to SDS PAGE followed by western blot with 66338-1-Ig (MMP3 antibody) at dilution of 1:10000 incubated at room temperature for 1.5 hours. This data was developed using the same antibody clone with 66338-1-PBS in a different storage buffer formulation.



Immunohistochemical analysis of paraffin-embedded rat colon tissue slide using 66338-1-Ig (MMP3 antibody) at dilution of 1:4000 (under 40x lens). Heat mediated antigen retrieval with Tris-EDTA buffer (pH 9.0). This data was developed using the same antibody clone with 66338-1-PBS in a different storage buffer formulation.



Immunofluorescent analysis of (-20°C Methanol) fixed A549 cells using MMP3 antibody (66338-1-Ig, Clone: 1F5A9) at dilution of 1:400 and CoraLite@488-Conjugated Goat Anti-Mouse IgG(H+L) (SA00013-1). This data was developed using the same antibody clone with 66338-1-PBS in a different storage buffer formulation.