

For Research Use Only

NUDT21 Monoclonal antibody, PBS Only



Catalog Number: 66335-1-PBS

Featured Product

Basic Information

Catalog Number:

66335-1-PBS

Size:

100ug, Concentration: 1mg/ml by Nanodrop;

Source:

Mouse

Isotype:

IgG1

Immunogen Catalog Number:

AG12260

GenBank Accession Number:

BC001403

GeneID (NCBI):

11051

UNIPROT ID:

O43809

Full Name:

nudix (nucleoside diphosphate linked moiety X)-type motif 21

Calculated MW:

26 kDa

Observed MW:

27 kDa

Purification Method:

Protein G purification

CloneNo.:

1C4C8

Applications

Tested Applications:

WB, IHC, IF/ICC, Indirect ELISA

Species Specificity:

human, mouse

Background Information

Cleavage and polyadenylation specific factor 5, 25 kDa (CPSF5, synonym: CFIM25) is one subunit of a cleavage factor required for 3' RNA cleavage and polyadenylation processing. The interaction of CPSF5 with the RNA is one of the earliest steps in the assembly of the 3' end processing complex and facilitates the recruitment of other processing factors.

Storage

Storage:

Store at -80°C.

Storage Buffer:

PBS Only

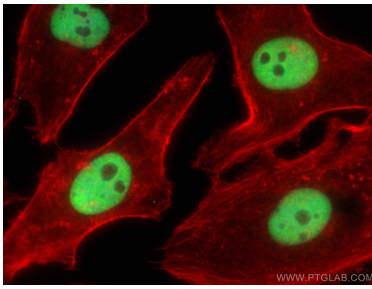
For technical support and original validation data for this product please contact:

T: 1 (888) 4PTGLAB (1-888-478-4522) (toll free in USA), or 1(312) 455-8498 (outside USA)

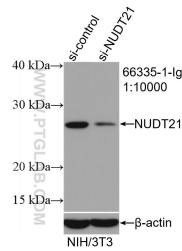
E: proteintech@ptglab.com
W: ptglab.com

This product is exclusively available under Proteintech Group brand and is not available to purchase from any other manufacturer.

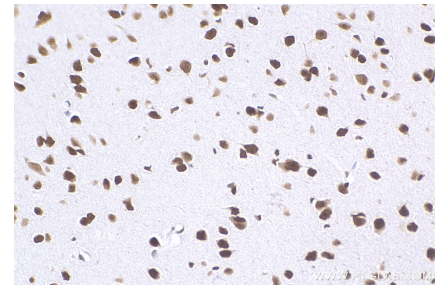
Selected Validation Data



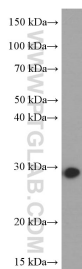
Immunofluorescent analysis of (4% PFA) fixed HeLa cells using NUDT21 antibody (66335-1-Ig, Clone: 1C4C8) at dilution of 1:2000 and CoraLite®488-Conjugated AffiniPure Goat Anti-Mouse IgG(H+L), CL594-phalloidin (red). This data was developed using the same antibody clone with 66335-1-PBS in a different storage buffer formulation.



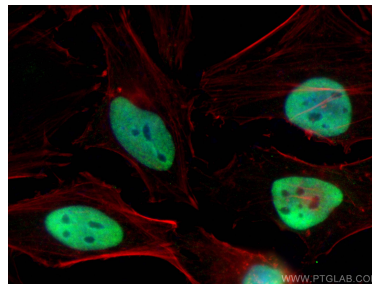
WB result of NUDT21 antibody (66335-1-Ig; 1:10000; incubated at room temperature for 1.5 hours) with sh-Control and sh-NUDT21 transfected NIH/3T3 cells. This data was developed using the same antibody clone with 66335-1-PBS in a different storage buffer formulation.



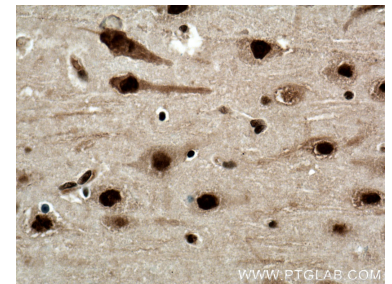
Immunohistochemical analysis of paraffin-embedded mouse brain tissue slide using 66335-1-Ig (NUDT21 antibody) at dilution of 1:1000 (under 40x lens). Heat mediated antigen retrieval with Tris-EDTA buffer (pH 9.0). This data was developed using the same antibody clone with 66335-1-PBS in a different storage buffer formulation.



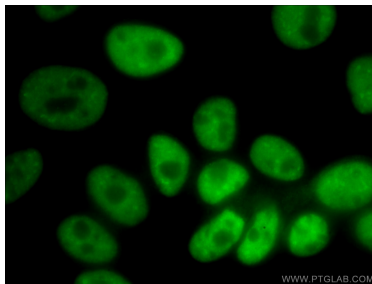
NIH/3T3 cells were subjected to SDS PAGE followed by western blot with 66335-1-Ig (NUDT21 antibody) at dilution of 1:3000 incubated at room temperature for 1.5 hours. This data was developed using the same antibody clone with 66335-1-PBS in a different storage buffer formulation.



Immunofluorescent analysis of (4% PFA) fixed HeLa cells using NUDT21 antibody (66335-1-Ig, Clone: 1C4C8) at dilution of 1:800 and CoraLite®488-Conjugated AffiniPure Goat Anti-Mouse IgG(H+L), CL594-phalloidin (red). This data was developed using the same antibody clone with 66335-1-PBS in a different storage buffer formulation.



Immunohistochemical analysis of paraffin-embedded human brain tissue slide using 66335-1-Ig (NUDT21 antibody) at dilution of 1:1000 (under 40x lens). Heat mediated antigen retrieval with Tris-EDTA buffer (pH 9.0). This data was developed using the same antibody clone with 66335-1-PBS in a different storage buffer formulation.



Immunofluorescent analysis of (10% Formaldehyde) fixed HepG2 cells using 66335-1-Ig (NUDT21 antibody) at dilution of 1:400 and Alexa Fluor 488-conjugated AffiniPure Goat Anti-Mouse IgG(H+L). This data was developed using the same antibody clone with 66335-1-PBS in a different storage buffer formulation.