

For Research Use Only

IGSF2/CD101 Monoclonal antibody, PBS Only

Catalog Number: 66333-1-PBS



Basic Information

Catalog Number: 66333-1-PBS	GenBank Accession Number: BC136484	Purification Method: Protein A purification
Size: 100ug, Concentration: 1 mg/ml by Nanodrop;	GeneID (NCBI): 9398	CloneNo.: 1E6A7
Source: Mouse	UNIPROT ID: Q93033	
Isotype: IgG1	Full Name: immunoglobulin superfamily, member 2	
Immunogen Catalog Number: AG23297	Observed MW: 120 kDa	

Applications

Tested Applications:
WB, IHC, Indirect ELISA

Species Specificity:
human, mouse

Background Information

IGSF2, also known as CD101, is a low abundance protein. Expression of CD101 is found on monocytes, granulocytes and dendritic cells. In addition expression on T lymphocytes is important for cell activation. It plays a role as inhibitor of T-cells proliferation induced by CD3 and inhibits expression of IL2RA on activated T-cells and secretion of IL2.

Storage

Storage:
Store at -80°C.
Storage Buffer:
PBS Only

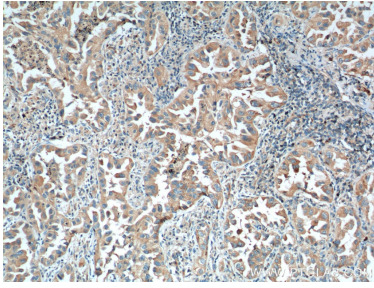
For technical support and original validation data for this product please contact:

T: 1 (888) 4PTGLAB (1-888-478-4522) (toll free
in USA), or 1(312) 455-8498 (outside USA)

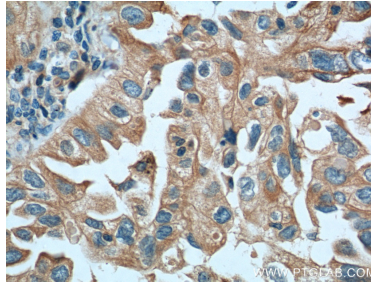
E: proteintech@ptglab.com
W: ptglab.com

This product is exclusively available under Proteintech Group brand and is not available to purchase from any other manufacturer.

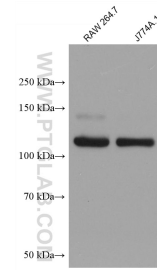
Selected Validation Data



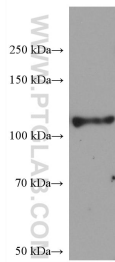
Immunohistochemical analysis of paraffin-embedded human lung cancer tissue slide using 66333-1-Ig (IGSF2 Antibody) at dilution of 1:200 (under 10x lens). Heat mediated antigen retrieval with Tris-EDTA buffer (pH 9.0). This data was developed using the same antibody clone with 66333-1-PBS in a different storage buffer formulation.



Immunohistochemical analysis of paraffin-embedded human lung cancer tissue slide using 66333-1-Ig (IGSF2 Antibody) at dilution of 1:200 (under 40x lens). Heat mediated antigen retrieval with Tris-EDTA buffer (pH 9.0). This data was developed using the same antibody clone with 66333-1-PBS in a different storage buffer formulation.



Various lysates were subjected to SDS PAGE followed by western blot with 66333-1-Ig (IGSF2 antibody) at dilution of 1:10000 incubated at room temperature for 1.5 hours. This data was developed using the same antibody clone with 66333-1-PBS in a different storage buffer formulation.



NR8383 cells were subjected to SDS PAGE followed by western blot with 66333-1-Ig (IGSF2 antibody) at dilution of 1:10000 incubated at room temperature for 1.5 hours. This data was developed using the same antibody clone with 66333-1-PBS in a different storage buffer formulation.