

For Research Use Only

SMYD3 Monoclonal antibody, PBS Only



Catalog Number: 66330-1-PBS

Basic Information

Catalog Number: 66330-1-PBS	GenBank Accession Number: BC031010	Purification Method: Protein G purification
Size: 100ug , Concentration: 1 mg/ml by Nanodrop;	GeneID (NCBI): 64754	CloneNo.: 1B5C10
Source: Mouse	UNIPROT ID: Q9H7B4	
Isotype: IgG1	Full Name: SET and MYND domain containing 3	
Immunogen Catalog Number: AG2624	Calculated MW: 428aa,49 kDa; 369aa,42 kDa	
	Observed MW: 49 kDa	

Applications

Tested Applications:
WB, IF, IHC, Indirect ELISA

Species Specificity:
human

Background Information

SMYD3, also name as ZMYND1 and ZNFN3A1, belongs to the histone-lysine methyltransferase family. It is a histone methyltransferase that plays an important role in transcriptional regulation in human carcinogenesis. It can specifically methylate histone H3 at lysine 4 and activate the transcription of a set of downstream genes, including several oncogenes (e.g., N-myc, CrkL, Wnt10b, RIZ and hTERT) and genes involved in the control of cell cycle. (PMID: 20957523). It plays an important role in transcriptional activation as a member of an RNA polymerase complex. SMYD3 is frequently overexpressed in different types of cancer cells. It functions as a coactivator of Era and potentiates Era activity in response to ligand. SMYD3 as a new coactivator for ER-mediated transcription, providing a possible link between SMYD3 overexpression and breast cancer. (PMID: 19509295) The common variable number of tandem repeats polymorphism in SMYD3 is a susceptibility factor for some types of human cancer (PMID: 16155568). Mainly cytoplasmic when cells are arrested at G0/G1, accumulates in the nucleus at S phase and G2/M (Uniprot).

Storage

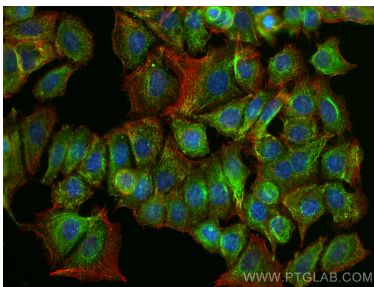
Storage:
Store at -80°C.

Storage Buffer:
PBS Only

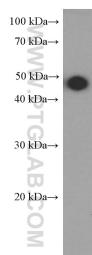
For technical support and original validation data for this product please contact:
T: 1 (888) 4PTGLAB (1-888-478-4522) (toll free in USA), or 1(312) 455-8498 (outside USA) E: proteintech@ptglab.com
W: ptglab.com

This product is exclusively available under Proteintech Group brand and is not available to purchase from any other manufacturer.

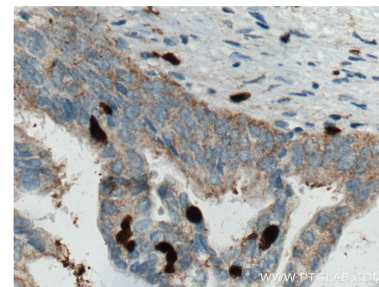
Selected Validation Data



Immunofluorescent analysis of (-20°C Ethanol) fixed MCF-7 cells using SMYD3 antibody (66330-1-Ig, Clone: 1B5C10) at dilution of 1:400 and CoraLite®488-Conjugated AffiniPure Goat Anti-Mouse IgG(H+L), (CL594-Phalloidin, red). This data was developed using the same antibody clone with 66330-1-PBS in a different storage buffer formulation.



A431 cells were subjected to SDS PAGE followed by western blot with 66330-1-Ig (SMYD3 Antibody) at dilution of 1:1000 incubated at room temperature for 1.5 hours. This data was developed using the same antibody clone with 66330-1-PBS in a different storage buffer formulation.



Immunohistochemical analysis of paraffin-embedded human pancreas cancer tissue slide using 66330-1-Ig (SMYD3 Antibody) at dilution of 1:200 (under 40x lens). Heat mediated antigen retrieval with Tris-EDTA buffer (pH 9.0). This data was developed using the same antibody clone with 66330-1-PBS in a different storage buffer formulation.