

For Research Use Only

SRD5A1 Monoclonal antibody, PBS Only (Capture)



Catalog Number: 66329-1-PBS

Featured Product

Basic Information

Catalog Number:

66329-1-PBS

Size:

100ug, Concentration: 1mg/ml by
Nanodrop;

Source:

Mouse

Isotype:

IgG1

Immunogen Catalog Number:

AG23351

GenBank Accession Number:

BC007033

GeneID (NCBI):

6715

UNIPROT ID:

P18405

Full Name:

steroid-5-alpha-reductase, alpha
polypeptide 1 (3-oxo-5 alpha-steroid
delta 4-dehydrogenase alpha 1)

Observed MW:

32 kDa

Purification Method:

Protein G purification

CloneNo.:

1D5D8

Applications

Tested Applications:

WB, IHC, IF/ICC, Cytometric bead array, Indirect ELISA

Species Specificity:

human

Product Information

66329-1-PBS targets SRD5A1 as part of a matched antibody pair:

MP50930-1: 66329-1-PBS capture and 66329-2-PBS detection (validated in Cytometric bead array)

Unconjugated mouse monoclonal antibody pair in PBS only (BSA and azide free) storage buffer at a concentration of 1 mg/mL, ready for conjugation.

This conjugation ready format makes antibodies ideal for use in many applications including: ELISAs, multiplex assays requiring matched pairs, mass cytometry, and multiplex imaging applications. Antibody use should be optimized by the end user for each application and assay.

Background Information

Steroid 5-alpha-reductase (SRD5A1) is a minor component of the reductase activity in prostate although the gene was originally cloned from prostate. On the other hand, SRD5A1 appears to be the predominant isozyme of steroid 5-alpha-reductase in the scalp and elsewhere in the skin.

Storage

Storage:

Store at -80°C.

Storage Buffer:

PBS Only

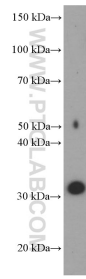
For technical support and original validation data for this product please contact:

T: 1 (888) 4PTGLAB (1-888-478-4522) (toll free
in USA), or 1(312) 455-8498 (outside USA)

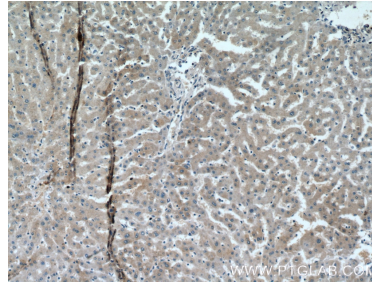
E: proteintech@ptglab.com
W: ptglab.com

This product is exclusively available under Proteintech Group brand and is not available to purchase from any other manufacturer.

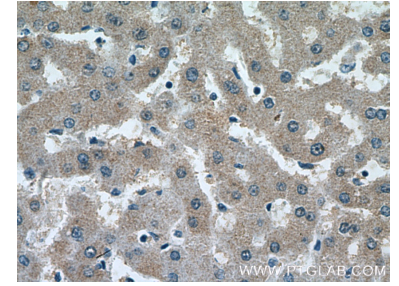
Selected Validation Data



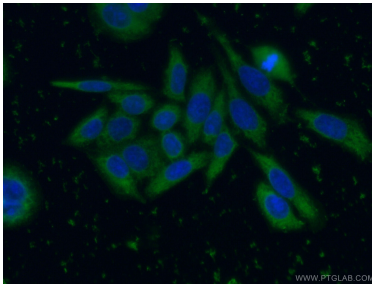
human testis tissue was subjected to SDS PAGE followed by western blot with 66329-1-Ig (SRD5A1 Antibody) at dilution of 1:1000 incubated at room temperature for 1.5 hours. This data was developed using the same antibody clone with 66329-1-PBS in a different storage buffer formulation.



Immunohistochemical analysis of paraffin-embedded human liver tissue slide using 66329-1-Ig (SRD5A1 Antibody) at dilution of 1:200 (under 10x lens). This data was developed using the same antibody clone with 66329-1-PBS in a different storage buffer formulation.



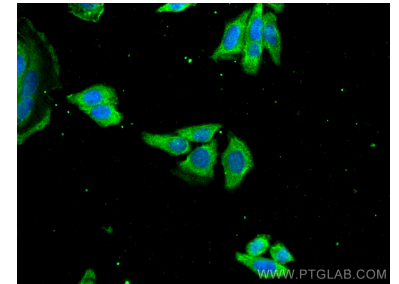
Immunohistochemical analysis of paraffin-embedded human liver tissue slide using 66329-1-Ig (SRD5A1 Antibody) at dilution of 1:200 (under 40x lens). This data was developed using the same antibody clone with 66329-1-PBS in a different storage buffer formulation.



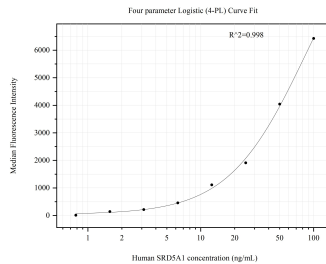
Immunofluorescent analysis of (-20°C Ethanol) fixed HeLa cells using 66329-1-Ig (SRD5A1 antibody) at dilution of 1:100 and Alexa Fluor 488-conjugated AffiniPure Goat Anti-Mouse IgG(H+L). This data was developed using the same antibody clone with 66329-1-PBS in a different storage buffer formulation.



Various lysates were subjected to SDS PAGE followed by western blot with 66329-1-Ig (SRD5A1 antibody) at dilution of 1:3000 incubated at room temperature for 1.5 hours. This data was developed using the same antibody clone with 66329-1-PBS in a different storage buffer formulation.



Immunofluorescent analysis of (-20°C Methanol) fixed HEPG2 cells using SRD5A1 antibody (66329-1-Ig, Clone: 1D5D8) at dilution of 1:800 and CoraLite@488-Conjugated AffiniPure Goat Anti-Mouse IgG(H+L). This data was developed using the same antibody clone with 66329-1-PBS in a different storage buffer formulation.



Cytometric bead array standard curve of MP50930-1, SRD5A1 Monoclonal Matched Antibody Pair, PBS Only. Capture antibody: 66329-1-PBS. Detection antibody: 66329-2-PBS. Standard: Ag23351. Range: 0.781-100 ng/mL