

For Research Use Only

SFRP2 Monoclonal antibody, PBS Only



Catalog Number: 66328-1-PBS

Basic Information

Catalog Number: 66328-1-PBS	GenBank Accession Number: BC008666	Purification Method: Protein A purification
Size: 100ug , Concentration: 1 mg/ml by Nanodrop;	GeneID (NCBI): 6423	CloneNo.: 1F3A1
Source: Mouse	UNIPROT ID: Q96HF1	
Isotype: IgG1	Full Name: secreted frizzled-related protein 2	
Immunogen Catalog Number: AG18840	Calculated MW: 295 aa, 34 kDa	
	Observed MW: 38 kDa	

Applications

Tested Applications:
WB, IF, IHC, Indirect ELISA

Species Specificity:
human, rat, pig, rabbit, mouse

Background Information

Secreted frizzled-related protein 2 (Sfrp2) is a secreted glycoprotein molecule containing an N terminal cysteine-rich domain, which is typically 30-50% identical to the putative Wnt-binding site of the frizzled receptor, and a C terminal heparin-binding domain with weak homology to netrins. It has been implicated in diverse cellular processes, including embryogenesis, regulation of cell apoptosis, and cell differentiation. Methylation of this gene is a potential marker for the presence of colorectal cancer.

Storage

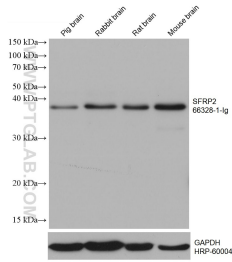
Storage:
Store at -80°C.

Storage Buffer:
PBS Only

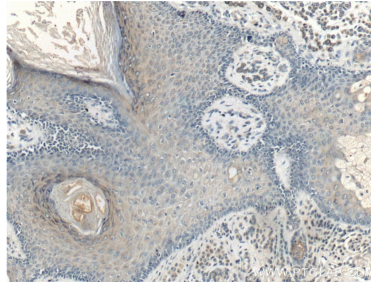
For technical support and original validation data for this product please contact:
T: 1 (888) 4PTGLAB (1-888-478-4522) (toll free in USA), or 1(312) 455-8498 (outside USA) E: proteintech@ptglab.com
W: ptglab.com

This product is exclusively available under Proteintech Group brand and is not available to purchase from any other manufacturer.

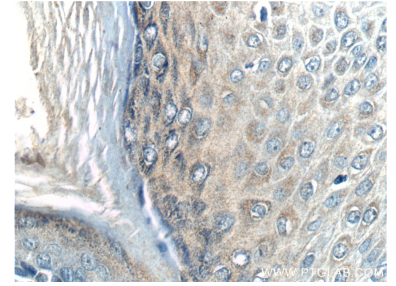
Selected Validation Data



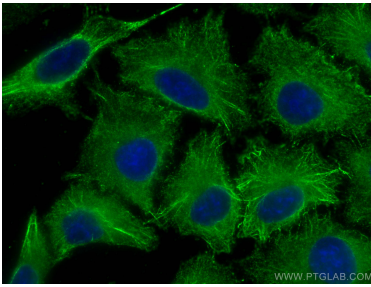
Various lysates were subjected to SDS PAGE followed by western blot with 66328-1-Ig (SFRP2 antibody) at dilution of 1:3000 incubated at room temperature for 1.5 hours. The membrane was stripped and reblotted with HRP-conjugated GAPDH Monoclonal antibody (HRP-60004) as loading control. This data was developed using the same antibody clone with 66328-1-PBS in a different storage buffer formulation.



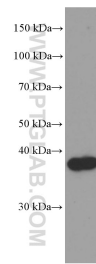
Immunohistochemical analysis of paraffin-embedded human malignant melanoma tissue slide using 66328-1-Ig (SFRP2 Antibody) at dilution of 1:200 (under 10x lens). This data was developed using the same antibody clone with 66328-1-PBS in a different storage buffer formulation.



Immunohistochemical analysis of paraffin-embedded human malignant melanoma tissue slide using 66328-1-Ig (SFRP2 Antibody) at dilution of 1:200 (under 40x lens). This data was developed using the same antibody clone with 66328-1-PBS in a different storage buffer formulation.



Immunofluorescent analysis of (-20°C Methanol) fixed A549 cells using SFRP2 antibody (66328-1-Ig, Clone: 1F3A1) at dilution of 1:1500 and CoraLite@488-Conjugated AffiniPure Goat Anti-Mouse IgG(H+L). This data was developed using the same antibody clone with 66328-1-PBS in a different storage buffer formulation.



rat brain tissue were subjected to SDS PAGE followed by western blot with 66328-1-Ig (SFRP2 Antibody) at dilution of 1:2000 incubated at room temperature for 1.5 hours. This data was developed using the same antibody clone with 66328-1-PBS in a different storage buffer formulation.