

EPCAM/CD326 Monoclonal antibody

Catalog Number: 66316-1-Ig

Featured Product

6 Publications

Basic Information

Catalog Number: 66316-1-Ig	GenBank Accession Number: BC014785	Purification Method: Protein A purification
Size: 150ul, Concentration: 1400 µg/ml by Nanodrop and 1000 µg/ml by Bradford method using BSA as the standard;	GeneID (NCBI): 4072	CloneNo.: 2A2D5
Source: Mouse	Full Name: epithelial cell adhesion molecule	Recommended Dilutions: WB 1:2000-1:10000 IHC 1:50-1:500 IF 1:200-1:800
Isotype: IgG2a	Calculated MW: 314 aa, 35 kDa	
Immunogen Catalog Number: AG15393	Observed MW: 35-40 kDa	

Applications

Tested Applications: IF, IHC, WB, ELISA	Positive Controls:
Cited Applications: FC, WB	WB : HaCaT cells, A431 cells, T-47D cells, MCF-7 cells
Species Specificity: human	IHC : human breast cancer tissue,
Cited Species: human	IF : MCF-7 cells, human colon cancer tissue, human stomach cancer tissue

Note-IHC: suggested antigen retrieval with TE buffer pH 9.0; (*) Alternatively, antigen retrieval may be performed with citrate buffer pH 6.0

Background Information

Epithelial cell adhesion molecule (EpCAM, CD326) is a type I transmembrane glycoprotein that functions as a homophilic, epithelial-specific intercellular cell-adhesion molecule. In addition to cell adhesion, EpCAM is also involved in cellular signaling, cell migration, proliferation, and differentiation. EpCAM is highly expressed on most carcinomas and therefore of potential use as a diagnostic and prognostic marker for a variety of carcinomas, and has become a therapeutic target. EpCAM may occur in distinct forms due to glycosylation. (PMID: 20837599; 19249674; 21576002; 22647938; 12691820)

Notable Publications

Author	Pubmed ID	Journal	Application
Chunyan Yang	32123160	Cell Death Dis	WB
Lei Wang	34218177	Biosens Bioelectron	FC
Yaxue Dai	35868149	Talanta	WB

Storage

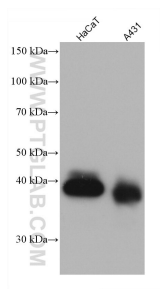
Storage:
Store at -20°C. Stable for one year after shipment.
Storage Buffer:
PBS with 0.02% sodium azide and 50% glycerol pH 7.3.
Aliquoting is unnecessary for -20°C storage

*** 20ul sizes contain 0.1% BSA

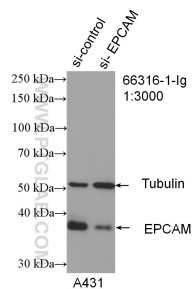
For technical support and original validation data for this product please contact:
 T: 1 (888) 4PTGLAB (1-888-478-4522) (toll free in USA), or 1(312) 455-8498 (outside USA)
 E: proteintech@ptglab.com
 W: ptglab.com

This product is exclusively available under Proteintech Group brand and is not available to purchase from any other manufacturer.

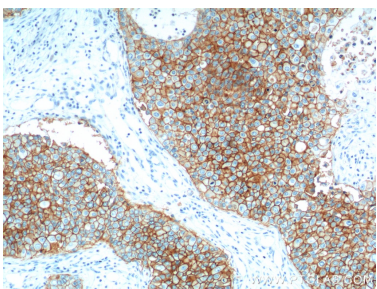
Selected Validation Data



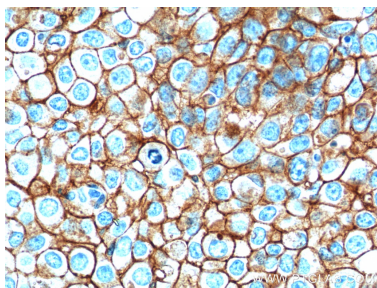
Various lysates were subjected to SDS PAGE followed by western blot with 66316-1-Ig (EPCAM antibody) at dilution of 1:5000 incubated at room temperature for 1.5 hours.



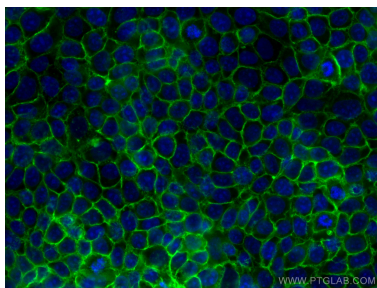
WB result of EPCAM antibody (66316-1-Ig; 1:3000; incubated at room temperature for 1.5 hours) with sh-Control and sh-EPCAM transfected A431 cells.



Immunohistochemical analysis of paraffin-embedded human breast cancer tissue slide using 66316-1-Ig (EPCAM Antibody) at dilution of 1:500 (under 10x lens). Heat mediated antigen retrieval with Tris-EDTA buffer (pH 9.0).



Immunohistochemical analysis of paraffin-embedded human breast cancer tissue slide using 66316-1-Ig (EPCAM Antibody) at dilution of 1:500 (under 40x lens). Heat mediated antigen retrieval with Tris-EDTA buffer (pH 9.0).



Immunofluorescent analysis of (-20°C Methanol) fixed MCF-7 cells using EPCAM antibody (66316-1-Ig, Clone: 2A2D5) at dilution of 1:400 and CoraLite® 488-Conjugated AffiniPure Goat Anti-Mouse IgG(H+L).