

For Research Use Only

# Vinculin Monoclonal antibody, PBS Only

Catalog Number: 66305-2-PBS



## Basic Information

<b>Catalog Number:</b> 66305-2-PBS	<b>GenBank Accession Number:</b> BC039174	<b>Purification Method:</b> Protein G purification
<b>Size:</b> 100ug , Concentration: 1 mg/ml by Nanodrop;	<b>GeneID (NCBI):</b> 7414	<b>CloneNo.:</b> 3A11F8
<b>Source:</b> Mouse	<b>UNIPROT ID:</b> P18206	
<b>Isotype:</b> IgG1	<b>Full Name:</b> vinculin	
<b>Immunogen Catalog Number:</b> AG24946	<b>Calculated MW:</b> 1133 aa, 124 kDa	
	<b>Observed MW:</b> 124 kDa	

## Applications

**Tested Applications:**  
WB, IHC, IF/ICC, Indirect ELISA

**Species Specificity:**  
human, mouse, rat, rabbit

## Background Information

Vinculin belongs to the vinculin/alpha-catenin family. It is an actin filament (F-actin)-binding protein which involved in cell-matrix adhesion and cell-cell adhesion. Vinculin regulates cell-surface E-cadherin expression and potentiates mechanosensing by the E-cadherin complex. It may also play important roles in cell morphology and locomotion. Vinculin is a 117-kDa, 1,066-amino-acid protein that is ubiquitously expressed. Its splice variant, metavinculin (124 kDa), is muscle-specific.

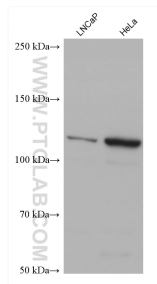
## Storage

**Storage:**  
Store at -80°C.  
**Storage Buffer:**  
PBS Only

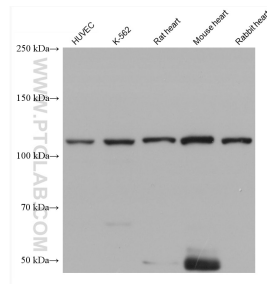
For technical support and original validation data for this product please contact:  
T: 1 (888) 4PTGLAB (1-888-478-4522) (toll free in USA), or 1(312) 455-8498 (outside USA)      E: proteintech@ptglab.com  
W: ptglab.com

This product is exclusively available under Proteintech Group brand and is not available to purchase from any other manufacturer.

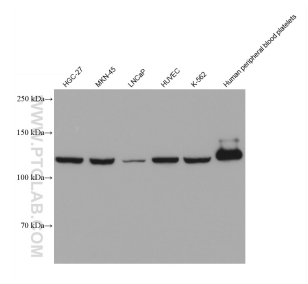
## Selected Validation Data



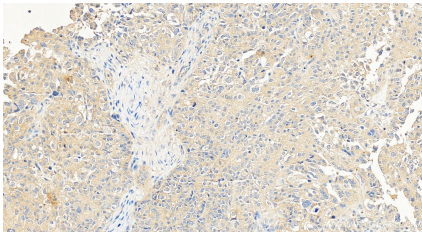
Various lysates were subjected to SDS PAGE followed by western blot with 66305-2-Ig (Vinculin antibody) at dilution of 1:20000 incubated at room temperature for 1.5 hours. This data was developed using the same antibody clone with 66305-2-PBS in a different storage buffer formulation.



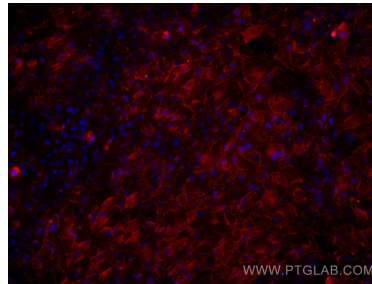
Various lysates were subjected to SDS PAGE followed by western blot with 66305-2-Ig (Vinculin antibody) at dilution of 1:20000 incubated at room temperature for 1.5 hours. This data was developed using the same antibody clone with 66305-2-PBS in a different storage buffer formulation.



Various lysates were subjected to SDS PAGE followed by western blot with 66305-2-Ig (Vinculin antibody) at dilution of 1:20000 incubated at room temperature for 1.5 hours. This data was developed using the same antibody clone with 66305-2-PBS in a different storage buffer formulation.



Immunohistochemical analysis of paraffin-embedded human ovary cancer tissue slide using 66305-2-Ig (Vinculin antibody) at dilution of 1:2000 (under 20x lens). Heat mediated antigen retrieval with Tris-EDTA buffer (pH 9.0). This data was developed using the same antibody clone with 66305-2-PBS in a different storage buffer formulation.



Immunofluorescent analysis of (4% PFA) fixed hTERT-RPE1 cells using Vinculin antibody (66305-2-Ig, Clone: 3A11F8 ) at dilution of 1:2000 and Multi-rAb Coralite® Plus 594-Goat Anti-Mouse Recombinant Secondary Antibody (H+L) (Cat.NO. RGAM004 ). This data was developed using the same antibody clone with 66305-2-PBS in a different storage buffer formulation.