

For Research Use Only

CAPG Monoclonal antibody, PBS Only



Catalog Number: 66277-1-PBS

Featured Product

Basic Information

Catalog Number:

66277-1-PBS

Size:

100ug, Concentration: 1 mg/ml by Nanodrop;

Source:

Mouse

Isotype:

IgG1

Immunogen Catalog Number:

AG24676

GenBank Accession Number:

BC000728

GeneID (NCBI):

822

UNIPROT ID:

P40121

Full Name:

capping protein (actin filament), gelsolin-like

Calculated MW:

39 kDa

Observed MW:

39-40 kDa

Purification Method:

Protein G purification

CloneNo.:

3A5B2

Applications

Tested Applications:

WB, IF, IHC, Indirect ELISA

Species Specificity:

human

Background Information

CapG (gelsolin-like actin-capping protein) is a member of the gelsolin superfamily proteins, which regulates actin filament length by capping or severing filaments. Studies have shown a role for CapG in regulating cell motility. The expression of CapG is upregulated under hypoxia and in turn increases the motility of cells. Recently it has been reported that the overexpression of CapG is associated with the progression of lung adenocarcinoma as well as lymphatic invasion status of cholangiocarcinoma, which may be used for prognosis of these tumors. (21908955,22155129)

Storage

Storage:

Store at -80°C.

Storage Buffer:

PBS Only

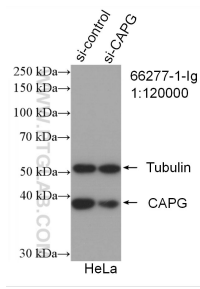
For technical support and original validation data for this product please contact:

T: 1 (888) 4PTGLAB (1-888-478-4522) (toll free in USA), or 1(312) 455-8498 (outside USA)

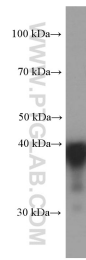
E: proteintech@ptglab.com
W: ptglab.com

This product is exclusively available under Proteintech Group brand and is not available to purchase from any other manufacturer.

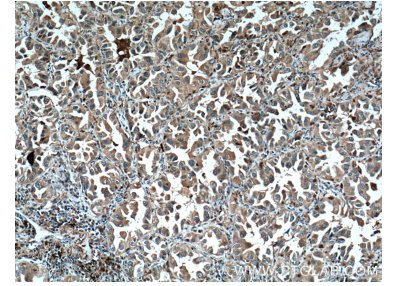
Selected Validation Data



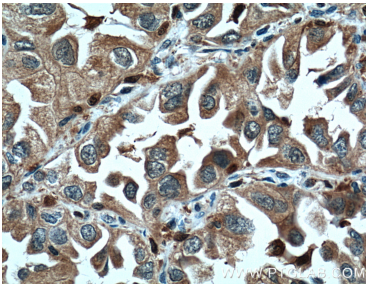
WB result of CAPG antibody (66277-1-Ig; 1:120000; incubated at room temperature for 1.5 hours) with sh-Control and sh-CAPG transfected HeLa cells. This data was developed using the same antibody clone with 66277-1-PBS in a different storage buffer formulation.



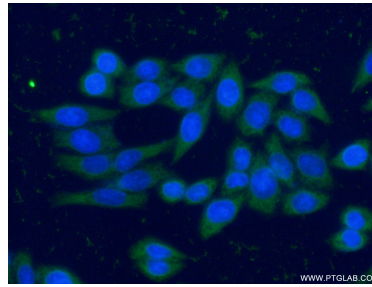
Jurkat cells were subjected to SDS PAGE followed by western blot with 66277-1-Ig (CAPG Antibody) at dilution of 1:1000 incubated at room temperature for 1.5 hours. This data was developed using the same antibody clone with 66277-1-PBS in a different storage buffer formulation.



Immunohistochemical analysis of paraffin-embedded human lung cancer tissue slide using 66277-1-Ig (CAPG Antibody) at dilution of 1:200 (under 10x lens). Heat mediated antigen retrieval with Tris-EDTA buffer (pH 9.0). This data was developed using the same antibody clone with 66277-1-PBS in a different storage buffer formulation.



Immunohistochemical analysis of paraffin-embedded human lung cancer tissue slide using 66277-1-Ig (CAPG Antibody) at dilution of 1:200 (under 40x lens). Heat mediated antigen retrieval with Tris-EDTA buffer (pH 9.0). This data was developed using the same antibody clone with 66277-1-PBS in a different storage buffer formulation.



Immunofluorescent analysis of (-20°C Ethanol) fixed HeLa cells using 66277-1-Ig (CAPG antibody) at dilution of 1:100 and Alexa Fluor 488-conjugated AffiniPure Goat Anti-Mouse IgG(H+L). This data was developed using the same antibody clone with 66277-1-PBS in a different storage buffer formulation.