

For Research Use Only

CLTCL1 Monoclonal antibody, PBS Only



Catalog Number: 66274-1-PBS

Basic Information

Catalog Number: 66274-1-PBS	GenBank Accession Number: NM_007098	Purification Method: Protein A purification
Size: 100ug, Concentration: 1 mg/ml by Nanodrop;	GeneID (NCBI): 8218	CloneNo.: 1B5A10
Source: Mouse	UNIPROT ID: P53675	
Isotype: IgG2a	Full Name: clathrin, heavy chain-like 1	
	Calculated MW: 187 kDa	
	Observed MW: 180 kDa	

Applications

Tested Applications:
WB, IF, IHC, Indirect ELISA

Species Specificity:
human

Background Information

CLTCL1, also named as CLH22, CLTCL and CLTD, belongs to the clathrin heavy chain family. Clathrin is the major protein of the polyhedral coat of coated pits and vesicles. Two different adapter protein complexes link the clathrin lattice either to the plasma membrane or to the trans-Golgi network. The antibody is specific to CLTCL1. It has no cross reaction to CLTC.

Storage

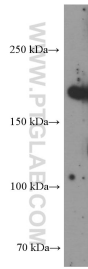
Storage:
Store at -80°C.

Storage Buffer:
PBS Only

For technical support and original validation data for this product please contact:
T: 1 (888) 4PTGLAB (1-888-478-4522) (toll free in USA), or 1(312) 455-8498 (outside USA) E: proteintech@ptglab.com
W: ptglab.com

This product is exclusively available under Proteintech Group brand and is not available to purchase from any other manufacturer.

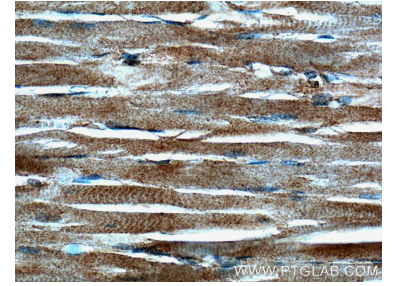
Selected Validation Data



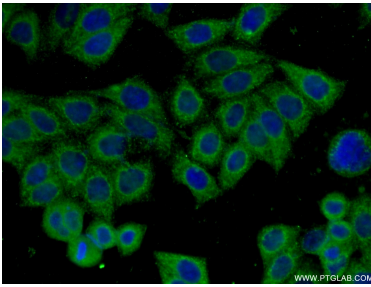
HeLa cells were subjected to SDS PAGE followed by western blot with 66274-1-Ig (CLTCL1 antibody) at dilution of 1:1000 incubated at room temperature for 1.5 hours. This data was developed using the same antibody clone with 66274-1-PBS in a different storage buffer formulation.



Immunohistochemical analysis of paraffin-embedded human skeletal muscle tissue slide using 66274-1-Ig (CLTCL1 antibody) at dilution of 1:200 (under 10x lens). This data was developed using the same antibody clone with 66274-1-PBS in a different storage buffer formulation.



Immunohistochemical analysis of paraffin-embedded human skeletal muscle tissue slide using 66274-1-Ig (CLTCL1 antibody) at dilution of 1:200 (under 40x lens). This data was developed using the same antibody clone with 66274-1-PBS in a different storage buffer formulation.



Immunofluorescent analysis of (-20°C Ethanol) fixed HeLa cells using 66274-1-Ig (CLTCL1 antibody) at dilution of 1:100 and Alexa Fluor 488-Conjugated AffiniPure Goat Anti-Mouse IgG(H+L). This data was developed using the same antibody clone with 66274-1-PBS in a different storage buffer formulation.