

For Research Use Only

MCP-1/CCL2 Monoclonal antibody

Catalog Number: 66272-1-Ig

Featured Product

135 Publications



Basic Information

Catalog Number:

66272-1-Ig

GenBank Accession Number:

NM-011333

Purification Method:

Protein G purification

Size:

150ul, Concentration: 2300 µg/ml by

Nanodrop and 1333 µg/ml by Bradford

method using BSA as the standard;

GeneID (NCBI):

20296

CloneNo.:

1B9F7

Full Name:

chemokine (C-C motif) ligand 2

Recommended Dilutions:

WB 1:1000-1:4000

IHC 1:50-1:500

Source:

Mouse

Observed MW:

26 kDa

Isotype:

IgG1

Immunogen Catalog Number:

AG24085

Applications

Tested Applications:

WB, IHC, ELISA

Cited Applications:

WB, IHC, IF, CoIP

Species Specificity:

mouse

Cited Species:

mouse, rabbit

Note-IHC: suggested antigen retrieval with TE buffer pH 9.0; (*) Alternatively, antigen retrieval may be performed with citrate buffer pH 6.0

Positive Controls:

WB: DC2.4 cells, LPS treated RAW 264.7 cells, mouse brain tissue, mouse lung tissue, mouse kidney tissue, mouse placenta tissue

IHC: mouse kidney tissue, mouse liver tissue

Background Information

Monocyte chemoattractant protein-1 (MCP-1/CCL2) is one of the key chemokines that regulate migration and infiltration of monocytes/macrophages. Both CCL2 and its receptor CCR2 have been demonstrated to be induced and involved in various diseases. Migration of monocytes from the blood stream across the vascular endothelium is required for routine immunological surveillance of tissues, as well as in response to inflammation.

Notable Publications

Author	Pubmed ID	Journal	Application
Zhuqing Li	34607159	Redox Biol	IF
Chengmei Huang	34583750	J Exp Clin Cancer Res	WB
Zilong Yao	34547121	FASEB J	WB, IHC, IF

Storage

Storage:

Store at -20°C. Stable for one year after shipment.

Storage Buffer:

PBS with 0.02% sodium azide and 50% glycerol pH 7.3.

Aliquoting is unnecessary for -20°C storage

*** 20ul sizes contain 0.1% BSA

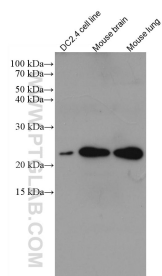
For technical support and original validation data for this product please contact:

T: 1 (888) 4PTGLAB (1-888-478-4522) (toll free in USA), or 1(312) 455-8498 (outside USA)

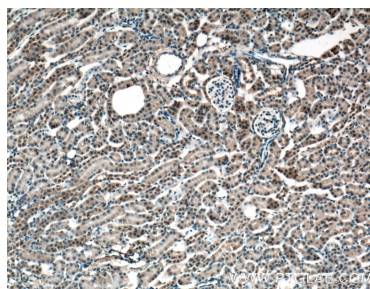
E: proteintech@ptglab.com
W: ptglab.com

This product is exclusively available under Proteintech Group brand and is not available to purchase from any other manufacturer.

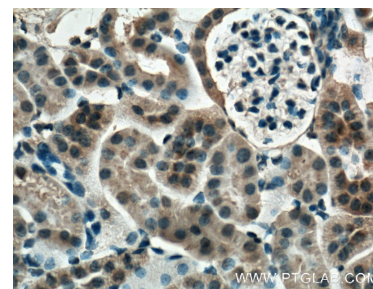
Selected Validation Data



Various lysates were subjected to SDS PAGE followed by western blot with 66272-1-Ig (Mcp1 antibody) at dilution of 1:2000 incubated at room temperature for 1.5 hours.



Immunohistochemical analysis of paraffin-embedded mouse kidney tissue slide using 66272-1-Ig (Mcp1 Antibody) at dilution of 1:200 (under 10x lens). Heat mediated antigen retrieval with Tris-EDTA buffer (pH 9.0).



Immunohistochemical analysis of paraffin-embedded mouse kidney tissue slide using 66272-1-Ig (Mcp1 Antibody) at dilution of 1:200 (under 40x lens). Heat mediated antigen retrieval with Tris-EDTA buffer (pH 9.0).