

For Research Use Only

CLTB Monoclonal antibody, PBS Only

Catalog Number: 66270-1-PBS



Basic Information

Catalog Number: 66270-1-PBS	GenBank Accession Number: BC006457	Purification Method: Protein G purification
Size: 100ug, Concentration: 1 mg/ml by Nanodrop;	GeneID (NCBI): 1212	CloneNo.: 1F9C2
Source: Mouse	UNIPROT ID: P09497	
Isotype: IgG1	Full Name: clathrin, light chain (Lcb)	
Immunogen Catalog Number: AG24347	Calculated MW: 23 kDa	
	Observed MW: 32-38 kDa	

Applications

Tested Applications:
WB, IF, IHC, Indirect ELISA

Species Specificity:
human, pig

Background Information

Clathrin is the major protein of the polyhedral coat of coated pits and vesicles which entrap specific macromolecules during receptor-mediated endocytosis. The clathrin molecule has a triskelion shape. Each clathrin triskelion is composed of three identical heavy chains (180 kDa) and three light chains of two types, LCA (CLTA) and LCB (CLTB) (30-40 kDa). The light chain subunits are thought to regulate the formation or disassembly of clathrin coats. (PMID: 2445759; 8374173; 3563513)

Storage

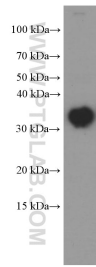
Storage:
Store at -80°C.

Storage Buffer:
PBS Only

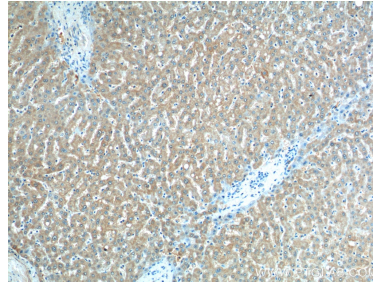
For technical support and original validation data for this product please contact:
T: 1 (888) 4PTGLAB (1-888-478-4522) (toll free in USA), or 1(312) 455-8498 (outside USA)
E: proteintech@ptglab.com
W: ptglab.com

This product is exclusively available under Proteintech Group brand and is not available to purchase from any other manufacturer.

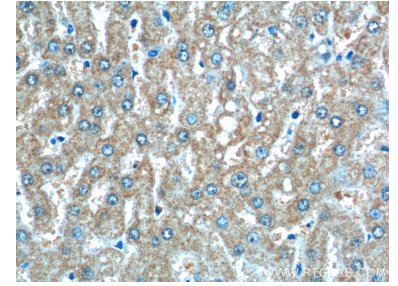
Selected Validation Data



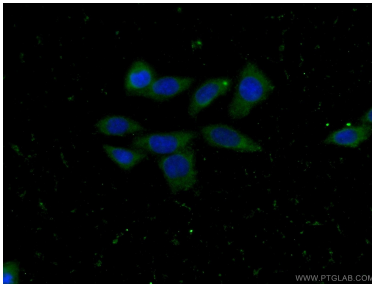
pig brain tissue were subjected to SDS PAGE followed by western blot with 66270-1-Ig (CLTB antibody) at dilution of 1:1000 incubated at room temperature for 1.5 hours. This data was developed using the same antibody clone with 66270-1-PBS in a different storage buffer formulation.



Immunohistochemical analysis of paraffin-embedded human liver tissue slide using 66270-1-Ig (CLTB Antibody) at dilution of 1:200 (under 10x lens). This data was developed using the same antibody clone with 66270-1-PBS in a different storage buffer formulation.



Immunohistochemical analysis of paraffin-embedded human liver tissue slide using 66270-1-Ig (CLTB Antibody) at dilution of 1:200 (under 40x lens). This data was developed using the same antibody clone with 66270-1-PBS in a different storage buffer formulation.



Immunofluorescent analysis of (-20°C Ethanol) fixed HeLa cells using 66270-1-Ig (CLTB antibody) at dilution of 1:100 and Alexa Fluor 488-conjugated AffiniPure Goat Anti-Mouse IgG(H+L). This data was developed using the same antibody clone with 66270-1-PBS in a different storage buffer formulation.