

14-3-3 Sigma Monoclonal antibody

Catalog Number: 66251-1-Ig 4 Publications

Basic Information

Catalog Number: 66251-1-Ig	GenBank Accession Number: BC002995	Purification Method: Protein G purification
Size: 150ul, Concentration: 1803 µg/ml by Nanodrop and 1373 µg/ml by Bradford method using BSA as the standard;	GeneID (NCBI): 2810	CloneNo.: 3F10D9
Source: Mouse	Full Name: stratifin	Recommended Dilutions: WB 1:2000-1:14000 IHC 1:200-1:8000 IF 1:20-1:200
Isotype: IgG1	Calculated MW: 28 kDa	
Immunogen Catalog Number: AG12644	Observed MW: 28-30 kDa	

Applications

Tested Applications: FC, IF, IHC, WB, ELISA	Positive Controls: WB : A431 cells, HeLa cells, MCF-7 cells
Cited Applications: IF, IHC, WB	IHC : human skin tissue, human breast cancer tissue, human breast hyperplasia tissue, human lung cancer tissue
Species Specificity: human	IF : MCF-7 cells,
Cited Species: human, mouse	
Note-IHC: suggested antigen retrieval with TE buffer pH 9.0; (*) Alternatively, antigen retrieval may be performed with citrate buffer pH 6.0	

Background Information

14-3-3 Sigma is a member 14-3-3 family of highly conserved proteins participating in diverse cellular processes including cell cycle progression. It is exclusively present in various epithelial cells, and alternatively named as human epithelial marker (HEM), or stratifin. Alteration of its expression has been linked to cancer.

Notable Publications

Author	Pubmed ID	Journal	Application
Yoshihiko Kobayashi	32661339	Nat Cell Biol	IF
Xuechao Li	34532265	Transl Androl Urol	IHC
Hua Chen	37956258	Environ Toxicol	IHC

Storage

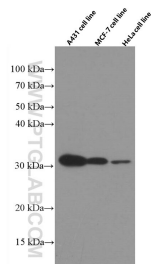
Storage:
Store at -20°C. Stable for one year after shipment.
Storage Buffer:
PBS with 0.02% sodium azide and 50% glycerol pH 7.3.
 Aliquoting is unnecessary for -20°C storage

*** 20ul sizes contain 0.1% BSA

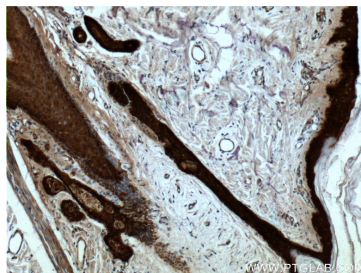
For technical support and original validation data for this product please contact:
 T: 1 (888) 4PTGLAB (1-888-478-4522) (toll free in USA), or 1(312) 455-8498 (outside USA)
 E: proteintech@ptglab.com
 W: ptglab.com

This product is exclusively available under Proteintech Group brand and is not available to purchase from any other manufacturer.

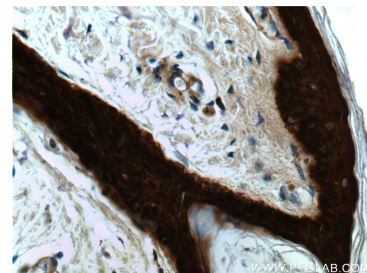
Selected Validation Data



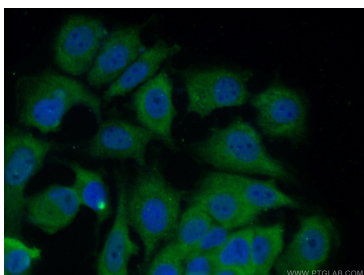
Various cell lysates were subjected to SDS PAGE followed by western blot with 66251-1-Ig (14-3-3 sigma antibody) at dilution of 1:7000 incubated at room temperature for 1.5 hours.



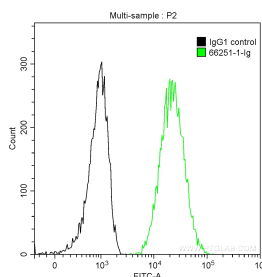
Immunohistochemical analysis of paraffin-embedded human skin tissue slide using 66251-1-Ig (14-3-3 sigma antibody) at dilution of 1:2000 (under 10x lens).



Immunohistochemical analysis of paraffin-embedded human skin tissue slide using 66251-1-Ig (14-3-3 sigma antibody) at dilution of 1:2000 (under 40x lens).



Immunofluorescent analysis of MCF-7 cells using 66251-1-Ig (14-3-3 sigma antibody) at dilution of 1:100 and Alexa Fluor 488-conjugated AffiniPure Goat Anti-Mouse IgG (H+L).



1×10^6 A431 cells were intracellularly stained with 0.2 ug Anti-Human 14-3-3 Sigma (66251-1-Ig, Clone:3F10D9) and CoraLite®488-Conjugated AffiniPure Goat Anti-Mouse IgG(H+L) at dilution 1:1000 (green), and 0.2 ug Control Antibody. Cells were fixed with 90% MeOH.