

For Research Use Only

C-Reactive Protein/CRP Monoclonal antibody, PBS Only

Catalog Number: 66250-1-PBS

Featured Product



Basic Information

Catalog Number:

66250-1-PBS

Size:

100ug, Concentration: 1 mg/ml by Nanodrop;

Source:

Mouse

Isotype:

IgG2a

Immunogen Catalog Number:

AG9883

GenBank Accession Number:

BC020766

GeneID (NCBI):

1401

UNIPROT ID:

P02741

Full Name:

C-reactive protein, pentraxin-related

Calculated MW:

224 aa, 25 kDa

Observed MW:

27 kDa

Purification Method:

Protein A purification

CloneNo.:

3F10A11

Applications

Tested Applications:

WB, IHC, IF-P, Indirect ELISA

Species Specificity:

human, mouse, rat, pig

Background Information

C-reactive protein (CRP) is an acute-phase serum protein synthesized by the liver in response to interleukin-6 (IL-6) during inflammation. The name of CRP derives from its ability to react with the C polysaccharide of *Streptococcus pneumoniae*. CRP is an annular, pentameric protein that belongs to the pentraxin family of proteins. CRP displays several functions associated with host defense: it promotes agglutination, bacterial capsular swelling, phagocytosis and complement fixation through its calcium-dependent binding to phosphorylcholine. It is used mainly as a marker of inflammation.

Storage

Storage:

Store at -80°C.

Storage Buffer:

PBS Only

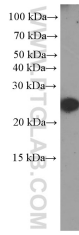
For technical support and original validation data for this product please contact:

T: 1 (888) 4PTGLAB (1-888-478-4522) (toll free in USA), or 1(312) 455-8498 (outside USA)

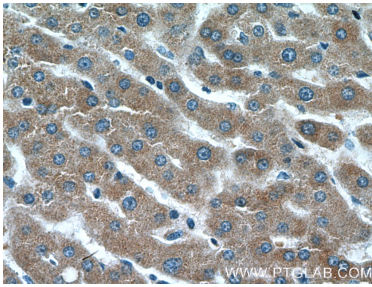
E: proteintech@ptglab.com
W: ptglab.com

This product is exclusively available under Proteintech Group brand and is not available to purchase from any other manufacturer.

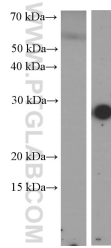
Selected Validation Data



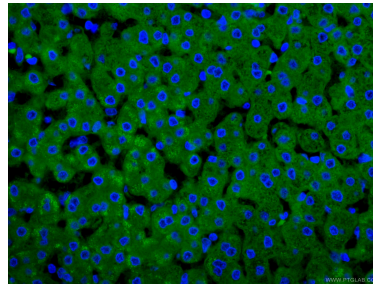
Serum from mouse injected with bacteria were subjected to SDS PAGE followed by western blot with 66250-1-Ig (C-Reactive Protein/CRP Antibody) at dilution of 1:2000. Horseradish peroxidase conjugated protein A was used for signal developing instead of secondary antibody incubated at room temperature for 1.5 hours. This data was developed using the same antibody clone with 66250-1-PBS in a different storage buffer formulation.



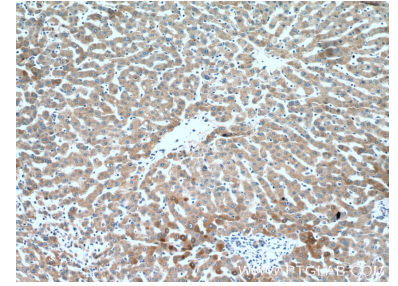
Immunohistochemical analysis of paraffin-embedded human liver tissue slide using 66250-1-Ig (C-Reactive Protein/CRP Antibody) at dilution of 1:200 (under 40x lens). This data was developed using the same antibody clone with 66250-1-PBS in a different storage buffer formulation.



Serum from normal mouse (left) and mouse injected with bacteria (right) were subjected to SDS PAGE followed by western blot with 66250-1-Ig (C-Reactive Protein/CRP Antibody) at dilution of 1:1000. Horseradish peroxidase conjugated protein A was used for signal developing instead of secondary antibody incubated at room temperature for 1.5 hours. This data was developed using the same antibody clone with 66250-1-PBS in a different storage buffer formulation.



Immunofluorescent analysis of (4% PFA) fixed human liver tissue using 66250-1-Ig (CRP antibody) at dilution of 1:100 and Coralite488-Conjugated AffiniPure Goat Anti-Mouse IgG(H+L). This data was developed using the same antibody clone with 66250-1-PBS in a different storage buffer formulation.



Immunohistochemical analysis of paraffin-embedded human liver tissue slide using 66250-1-Ig (C-Reactive Protein/CRP Antibody) at dilution of 1:200 (under 10x lens). This data was developed using the same antibody clone with 66250-1-PBS in a different storage buffer formulation.