

## CRP Monoclonal antibody

Catalog Number: 66250-1-Ig 7 Publications

## Basic Information

<b>Catalog Number:</b> 66250-1-Ig	<b>GenBank Accession Number:</b> BC020766	<b>Purification Method:</b> Protein A purification
<b>Size:</b> 150ul , Concentration: 3200 µg/ml by Nanodrop and 1600 µg/ml by Bradford method using BSA as the standard;	<b>GeneID (NCBI):</b> 1401	<b>CloneNo.:</b> 3F10A11
<b>Source:</b> Mouse	<b>Full Name:</b> C-reactive protein, pentraxin-related	<b>Recommended Dilutions:</b> WB 1:2000-1:10000 IHC 1:50-1:500 IF 1:50-1:500
<b>Isotype:</b> IgG2a	<b>Calculated MW:</b> 224 aa, 25 kDa	
<b>Immunogen Catalog Number:</b> AG9883	<b>Observed MW:</b> 27 kDa	

## Applications

<b>Tested Applications:</b> IF, IHC, WB, ELISA	<b>Positive Controls:</b>
<b>Cited Applications:</b> IF, IHC, WB	<b>WB :</b> serum from mouse injected with bacteria, pig liver tissue, rat liver tissue, serum from mouse injected with bacteria tissue
<b>Species Specificity:</b> human, mouse, rat, pig	<b>IHC :</b> human liver tissue,
<b>Cited Species:</b> human, rat, mouse, monkey	<b>IF :</b> human liver tissue,
<b>Note-IHC: suggested antigen retrieval with TE buffer pH 9.0; (*) Alternatively, antigen retrieval may be performed with citrate buffer pH 6.0</b>	

## Background Information

C-reactive protein (CRP) is an acute-phase serum protein synthesized by the liver in response to interleukin-6 (IL-6) during inflammation. The name of CRP derives from its ability to react with the C polysaccharide of *Streptococcus pneumoniae*. CRP is an annular, pentameric protein that belongs to the pentraxin family of proteins. CRP displays several functions associated with host defense: it promotes agglutination, bacterial capsular swelling, phagocytosis and complement fixation through its calcium-dependent binding to phosphorylcholine. It is used mainly as a marker of inflammation.

## Notable Publications

Author	Pubmed ID	Journal	Application
Amrita K Cheema	35675853	Int J Radiat Oncol Biol Phys	WB
Shaoning Li	33599398	Brain Behav	WB, IHC
Anika Alberts	33363539	Front Immunol	WB

## Storage

**Storage:**  
Store at -20°C. Stable for one year after shipment.

**Storage Buffer:**  
PBS with 0.02% sodium azide and 50% glycerol pH 7.3.

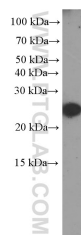
**Aliquoting is unnecessary for -20°C storage**

\*\*\* 20ul sizes contain 0.1% BSA

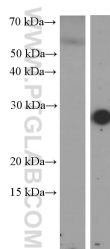
For technical support and original validation data for this product please contact:  
 T: 1 (888) 4PTGLAB (1-888-478-4522) (toll free in USA), or 1(312) 455-8498 (outside USA)  
 E: [proteintech@ptglab.com](mailto:proteintech@ptglab.com)  
 W: [ptglab.com](http://ptglab.com)

This product is exclusively available under Proteintech Group brand and is not available to purchase from any other manufacturer.

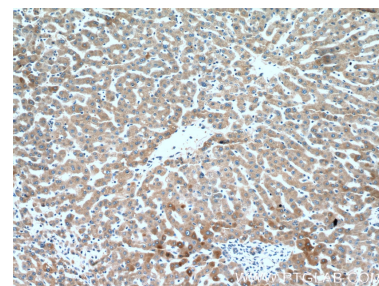
## Selected Validation Data



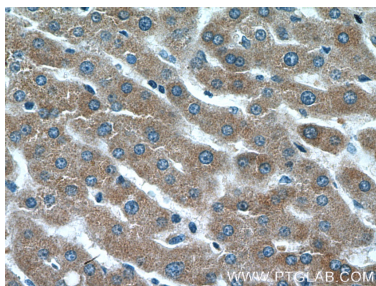
Serum from mouse injected with bacteria were subjected to SDS PAGE followed by western blot with 66250-1-Ig (CRP Antibody) at dilution of 1:2000. Horseradish peroxidase conjugated protein A was used for signal developing instead of secondary antibody incubated at room temperature for 1.5 hours.



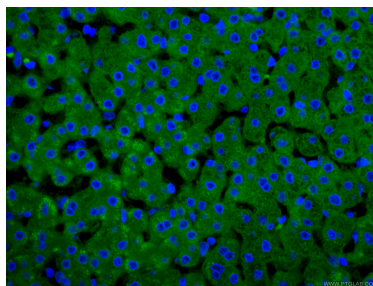
Serum from normal mouse (left) and mouse injected with bacteria (right) were subjected to SDS PAGE followed by western blot with 66250-1-Ig (CRP Antibody) at dilution of 1:1000. Horseradish peroxidase conjugated protein A was used for signal developing instead of secondary antibody incubated at room temperature for 1.5 hours.



Immunohistochemical analysis of paraffin-embedded human liver tissue slide using 66250-1-Ig (CRP Antibody) at dilution of 1:200 (under 10x lens).



Immunohistochemical analysis of paraffin-embedded human liver tissue slide using 66250-1-Ig (CRP Antibody) at dilution of 1:200 (under 40x lens).



Immunofluorescent analysis of (4% PFA) fixed human liver tissue using 66250-1-Ig (CRP antibody) at dilution of 1:100 and CoraLite488-Conjugated AffiniPure Goat Anti-Mouse IgG(H+L).