

For Research Use Only

# BBS2 Monoclonal antibody, PBS Only

Catalog Number: 66246-1-PBS



## Basic Information

<b>Catalog Number:</b> 66246-1-PBS	<b>GenBank Accession Number:</b> BC014140	<b>Purification Method:</b> Protein A purification
<b>Size:</b> 100ug , Concentration: 1 mg/ml by Nanodrop;	<b>GeneID (NCBI):</b> 583	<b>CloneNo.:</b> 2E11B3
<b>Source:</b> Mouse	<b>UNIPROT ID:</b> Q9BXC9	
<b>Isotype:</b> IgG3	<b>Full Name:</b> Bardet-Biedl syndrome 2	
<b>Immunogen Catalog Number:</b> AG21390	<b>Calculated MW:</b> 80 kDa	
	<b>Observed MW:</b> 80-90 kDa	

## Applications

**Tested Applications:**  
WB, IF, Indirect ELISA

**Species Specificity:**  
human, Canine

## Storage

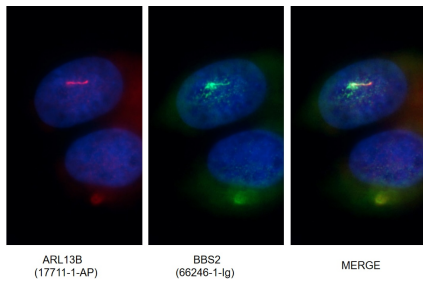
**Storage:**  
Store at -80°C.

**Storage Buffer:**  
PBS Only

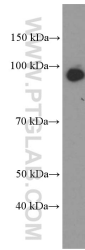
For technical support and original validation data for this product please contact:  
T: 1 (888) 4PTGLAB (1-888-478-4522) (toll free in USA), or 1(312) 455-8498 (outside USA)      E: proteintech@ptglab.com  
W: ptglab.com

This product is exclusively available under Proteintech Group brand and is not available to purchase from any other manufacturer.

## Selected Validation Data



Immunofluorescent images of MDCK cells stained with BBS2 mouse mAb (66246-1-Ig) and ARL13B rabbit pAb (17711-1-AP) at dilution of 1:50, further stained with Alexa Fluor 488-conjugated AffiniPure-Goat anti-Mouse IgG (H+L) for 66246-1-Ig, and Alexa Fluor 594-conjugated AffiniPure Goat Anti-Rabbit IgG (H+L) for 17711-1-AP. This data was developed using the same antibody clone with 66246-1-PBS in a different storage buffer formulation.



K-562 cells were subjected to SDS PAGE followed by western blot with 66246-1-Ig (BBS2 Antibody) at dilution of 1:1000 incubated at room temperature for 1.5 hours. This data was developed using the same antibody clone with 66246-1-PBS in a different storage buffer formulation.