

For Research Use Only

BrdU Monoclonal antibody, PBS Only

Catalog Number:66241-1-PBS



Basic Information

Catalog Number:

66241-1-PBS

Size:

100ug , Concentration: 1 mg/ml by Nanodrop;

Source:

Mouse

Isotype:

IgG2a

GenBank Accession Number:

GeneID (NCBI):

Full Name:

Purification Method:

Protein A purification

CloneNo.:

1B10E12

Applications

Tested Applications:

IHC, IF/ICC, Indirect ELISA

Species Specificity:

human, mouse, rat

Background Information

Bromodeoxyuridine (5-bromo-2'-deoxyuridine, BrdU, BUdR, BrdUrd) is a synthetic nucleoside that is an analog of thymidine. It can be incorporated into the newly synthesized DNA of replicating cells (during the S phase of the cell cycle), substituting for thymidine during DNA replication. As such, BrdU is used for birth dating and monitoring cell proliferation. BrdU is a toxic and mutagenic substance. It triggers cell death, the formation of teratomas, alters DNA stability, lengthens the cell cycle, and has Omitogenic, transcriptional and translational effects on cells that incorporate it. This antibody does not cross react with Thymidine.

Protocol for IHC:

<https://www.ptgcn.com/protocol/66241-1-IgIHC.pdf>

Protocol for IF:

<https://www.ptgcn.com/protocol/66241-1-IgIF.pdf>

Storage

Storage:

Store at -80°C.

Storage Buffer:

PBS Only

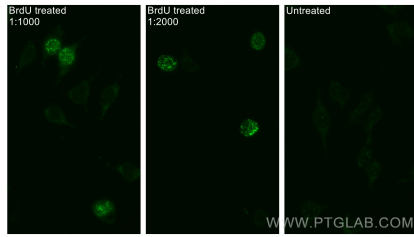
For technical support and original validation data for this product please contact:

T: 1 (888) 4PTGLAB (1-888-478-4522) (toll free in USA), or 1(312) 455-8498 (outside USA)

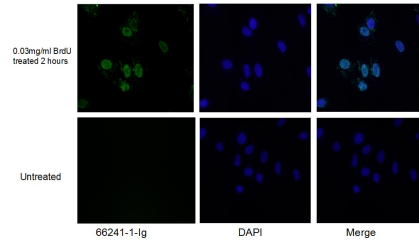
E: proteintech@ptglab.com
W: ptglab.com

This product is exclusively available under Proteintech Group brand and is not available to purchase from any other manufacturer.

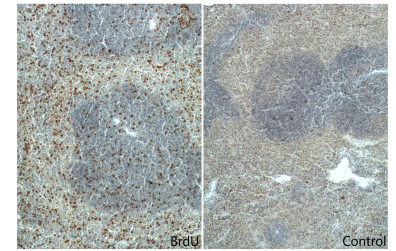
Selected Validation Data



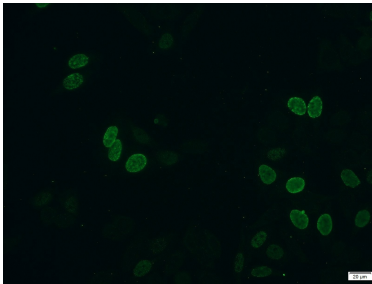
Immunofluorescent analysis of (-20°C Ethanol) fixed L-929 cells using BrdU antibody (66241-1-Ig, Clone: 1B10E12) at dilution of 1:1000 and CoraLite®488-Conjugated AffiniPure Goat Anti-Mouse IgG(H+L). This data was developed using the same antibody clone with 66241-1-PBS in a different storage buffer formulation.



Immunofluorescent analysis of (10% Formaldehyde) fixed HeLa cells using 66241-1-Ig (BrdU antibody) at dilution of 1:300 and Alexa Fluor 488-conjugated AffiniPure Goat Anti-Mouse IgG(H+L). This data was developed using the same antibody clone with 66241-1-PBS in a different storage buffer formulation.



Immunohistochemical analysis of paraffin-embedded mouse spleen tissue slide (with/without BrdU feeding) using 66241-1-Ig (BrdU Antibody) at dilution of 1:400 (under 10x lens). Heat mediated antigen retrieval with Tris-EDTA buffer (pH 9.0). This data was developed using the same antibody clone with 66241-1-PBS in a different storage buffer formulation.



Immunofluorescent analysis of HeLa cells (treated with 0.03 mg/ml BrdU for 2 hours) using 66241-1-Ig(BrdU antibody) at dilution of 1:300 and Alexa Fluor 488-conjugated AffiniPure Goat Anti-Mouse IgG(H+L). This data was developed using the same antibody clone with 66241-1-PBS in a different storage buffer formulation.