

For Research Use Only

Mammaglobin A Monoclonal antibody, PBS Only



Catalog Number: 66237-1-PBS

Basic Information

| | | |
|--|---|---|
| Catalog Number: 66237-1-PBS | GenBank Accession Number: BC128252 | Purification Method: Protein A purification |
| Size: 100ug, Concentration: 1 mg/ml by Nanodrop; | GeneID (NCBI): 4250 | CloneNo.: 2E5D4 |
| Source: Mouse | UNIPROT ID: Q13296 | |
| Isotype: IgG1 | Full Name: secretoglobin, family 2A, member 2 | |
| Immunogen Catalog Number: AG22485 | Calculated MW: 93 aa, 10 kDa | |

Applications

Tested Applications:
IF, IHC, Indirect ELISA

Species Specificity:
human

Background Information

Mammaglobin A, also known as SCGB2A2, is a member of the secretoglobin superfamily. Mammaglobin A is a breast cancer-associated antigen almost exclusively over-expressed in primary and metastatic human breast cancers, making it a specific molecular marker and a potential therapeutic target for breast cancer. This monoclonal antibody is raised against full-length of 93-amino acid human mammaglobin A.

Storage

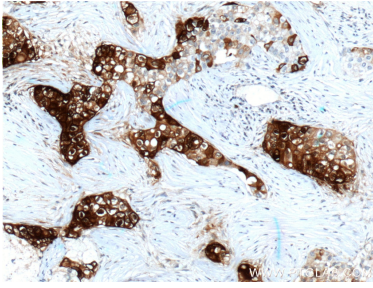
Storage:
Store at -80°C.

Storage Buffer:
PBS Only

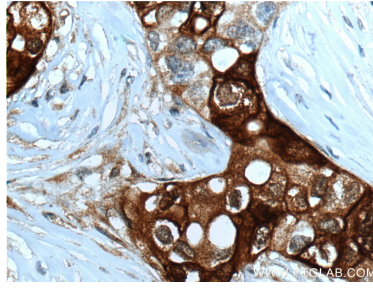
For technical support and original validation data for this product please contact:
T: 1 (888) 4PTGLAB (1-888-478-4522) (toll free in USA), or 1(312) 455-8498 (outside USA) E: proteintech@ptglab.com W: ptglab.com

This product is exclusively available under Proteintech Group brand and is not available to purchase from any other manufacturer.

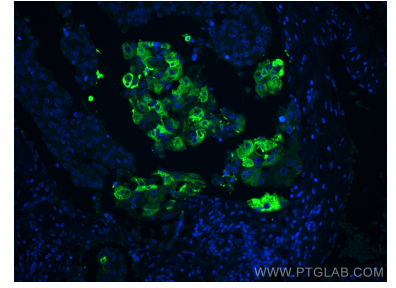
Selected Validation Data



Immunohistochemical analysis of paraffin-embedded human breast cancer tissue slide using 66237-1-Ig (Mammaglobin A antibody at dilution of 1:200 (under 10x lens). Heat mediated antigen retrieval with Tris-EDTA buffer (pH 9.0). This data was developed using the same antibody clone with 66237-1-PBS in a different storage buffer formulation.



Immunohistochemical analysis of paraffin-embedded human breast cancer tissue slide using 66237-1-Ig (Mammaglobin A antibody at dilution of 1:200 (under 40x lens). Heat mediated antigen retrieval with Tris-EDTA buffer (pH 9.0). This data was developed using the same antibody clone with 66237-1-PBS in a different storage buffer formulation.



Immunofluorescent analysis of (4% PFA) fixed human breast cancer tissue using Mammaglobin A antibody (66237-1-Ig, Clone: 2E5D4) at dilution of 1:400 and CoraLite® 488-Conjugated AffiniPure Goat Anti-Mouse IgG(H+L). This data was developed using the same antibody clone with 66237-1-PBS in a different storage buffer formulation.