

For Research Use Only

p38 MAPK Monoclonal antibody, PBS Only (Capture)

Catalog Number: 66234-1-PBS

Featured Product



Basic Information

Catalog Number: 66234-1-PBS	GenBank Accession Number: BC031574	Purification Method: Protein A purification
Size: 100ug, Concentration: 1mg/ml by Nanodrop;	GeneID (NCBI): 1432	CloneNo.: 1A1C2
Source: Mouse	UNIPROT ID: Q16539	
Isotype: IgG2b	Full Name: mitogen-activated protein kinase 14	
Immunogen Catalog Number: AG5797	Calculated MW: 360 aa, 41 kDa	
	Observed MW: 38-42 kDa	

Applications

Tested Applications:
WB, IHC, IF/ICC, Cytometric bead array, Indirect ELISA

Species Specificity:
human, mouse, rat, pig

Product Information

66234-1-PBS targets p38 MAPK as part of a matched antibody pair:

MP50419-1: 66234-1-PBS capture and 68965-1-PBS detection (validated in Cytometric bead array)

MP50419-2: 66234-1-PBS capture and 68966-1-PBS detection (validated in Cytometric bead array)

Unconjugated mouse monoclonal antibody pair in PBS only (BSA and azide free) storage buffer at a concentration of 1 mg/mL, ready for conjugation.

This conjugation ready format makes antibodies ideal for use in many applications including: ELISAs, multiplex assays requiring matched pairs, mass cytometry, and multiplex imaging applications. Antibody use should be optimized by the end user for each application and assay.

Background Information

MAPK14 (mitogen-activated protein kinase 14) is also named as SAPK2A, p38MAPK, CSBP1, RK, p38, EXIP, Mxi2, CSBP2, PRKM14, PRKM15, CSPB1, p38ALPHA and belongs to the MAP kinase subfamily. MAPK14-signaling is a central pathway for the integration of instructive signals in dendritic cells for T(H)17 differentiation and inflammation (PMID:22231518). It plays an important role in the regulation of hematopoietic stem cell self-renewal in vitro and inhibition of MAPK14 activation with a small molecule inhibitor may represent a novel approach to promote ex vivo expansion of hematopoietic stem cell (PMID:21198398). This protein has 4 isoforms produced by alternative splicing.

Storage

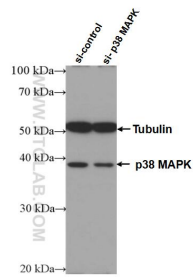
Storage:
Store at -80°C.

Storage Buffer:
PBS Only

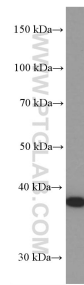
For technical support and original validation data for this product please contact:
T: 1 (888) 4PTGLAB (1-888-478-4522) (toll free in USA), or 1(312) 455-8498 (outside USA)
E: proteintech@ptglab.com
W: ptglab.com

This product is exclusively available under Proteintech Group brand and is not available to purchase from any other manufacturer.

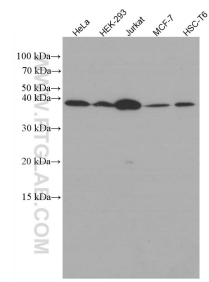
Selected Validation Data



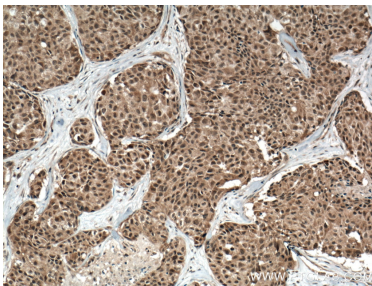
WB result of p38 MAPK antibody (66234-1-Ig; 1:1000; incubated at room temperature for 1.5 hours) with sh-Control and sh-p38 MAPK transfected HEK-293 cells. This data was developed using the same antibody clone with 66234-1-PBS in a different storage buffer formulation.



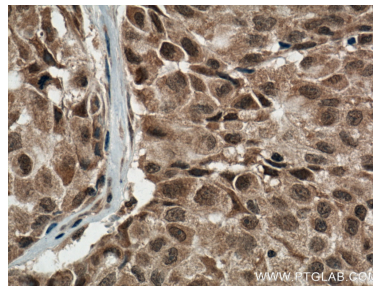
human heart tissue were subjected to SDS PAGE followed by western blot with 66234-1-Ig (p38 MAPK Antibody) at dilution of 1:2000 incubated at room temperature for 1.5 hours. This data was developed using the same antibody clone with 66234-1-PBS in a different storage buffer formulation.



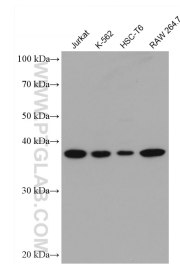
Various lysates were subjected to SDS PAGE followed by western blot with 66234-1-Ig (p38 MAPK antibody) at dilution of 1:5000 incubated at room temperature for 1.5 hours. This data was developed using the same antibody clone with 66234-1-PBS in a different storage buffer formulation.



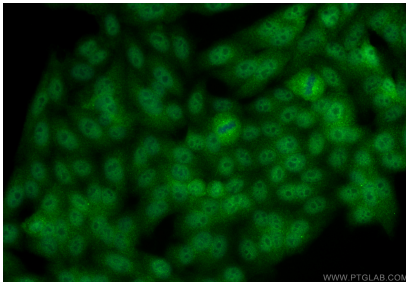
Immunohistochemical analysis of paraffin-embedded human lung cancer tissue slide using 66234-1-Ig (p38 MAPK antibody) at dilution of 1:500 (under 10x lens. Heat mediated antigen retrieval with Tris-EDTA buffer (pH 9.0). This data was developed using the same antibody clone with 66234-1-PBS in a different storage buffer formulation.



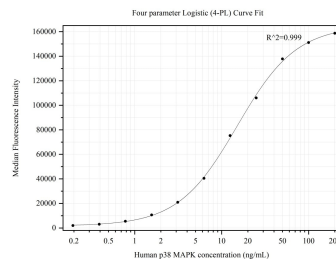
Immunohistochemical analysis of paraffin-embedded human lung cancer tissue slide using 66234-1-Ig (p38 MAPK antibody) at dilution of 1:500 (under 40x lens. Heat mediated antigen retrieval with Tris-EDTA buffer (pH 9.0). This data was developed using the same antibody clone with 66234-1-PBS in a different storage buffer formulation.



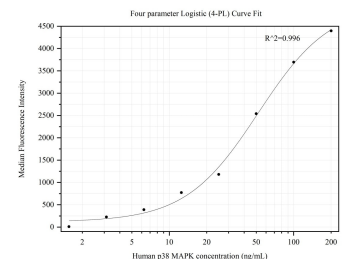
Various lysates were subjected to SDS PAGE followed by western blot with 66234-1-Ig (p38 MAPK antibody) at dilution of 1:20000 incubated at room temperature for 1.5 hours. This data was developed using the same antibody clone with 66234-1-PBS in a different storage buffer formulation.



Immunofluorescent analysis of (4% PFA) fixed HepG2 cells using p38 MAPK antibody (66234-1-Ig, Clone: 1A1C2) at dilution of 1:2000 and CoraLite®488-Conjugated Goat Anti-Mouse IgG(H+L) (SA00013-1). This data was developed using the same antibody clone with 66234-1-PBS in a different storage buffer formulation.



Cytometric bead array standard curve of MP50419-1, p38 MAPK Monoclonal Matched Antibody Pair, PBS Only. Capture antibody: 66234-1-PBS. Detection antibody: 68965-1-PBS. Standard: Ag5797. Range: 0.195-200 ng/mL.



Cytometric bead array standard curve of MP50419-2, p38 MAPK Monoclonal Matched Antibody Pair, PBS Only. Capture antibody: 66234-1-PBS. Detection antibody: 68966-1-PBS. Standard: Ag5797. Range: 1.563-200 ng/mL.