

For Research Use Only

CD68 Monoclonal antibody, PBS Only (Capture)

Catalog Number: 66231-1-PBS



Basic Information

Catalog Number: 66231-1-PBS	GenBank Accession Number: BC015557	Purification Method: Protein A purification
Size: 100ug, Concentration: 1mg/ml by Nanodrop;	GeneID (NCBI): 968	CloneNo.: 3F10E11
Source: Mouse	UNIPROT ID: P34810	
Isotype: IgG1	Full Name: CD68 molecule	
Immunogen Catalog Number: AG22815	Calculated MW: 37 kDa	

Applications

Tested Applications:
Cytometric bead array, Indirect ELISA

Species Specificity:
human, mouse

Product Information

66231-1-PBS targets CD68 as part of a matched antibody pair:

MP50230-1: 66231-1-PBS capture and 66231-3-PBS detection (validated in Cytometric bead array)

MP50230-2: 66231-1-PBS capture and 66231-4-PBS detection (validated in Cytometric bead array)

Unconjugated mouse monoclonal antibody pair in PBS only (BSA and azide free) storage buffer at a concentration of 1 mg/mL, ready for conjugation.

This conjugation ready format makes antibodies ideal for use in many applications including: ELISAs, multiplex assays requiring matched pairs, mass cytometry, and multiplex imaging applications. Antibody use should be optimized by the end user for each application and assay.

Background Information

CD68 is a type I transmembrane glycoprotein that is highly expressed by human monocytes and tissue macrophages. It belongs to the lysosomal/endosomal-associated membrane glycoprotein (LAMP) family and primarily localizes to lysosomes and endosomes with a smaller fraction circulating to the cell surface. CD68 is also a member of the scavenger receptor family. It may play a role in phagocytic activities of tissue macrophages.

Storage

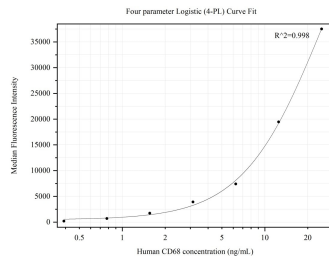
Storage:
Store at -80°C.

Storage Buffer:
PBS Only

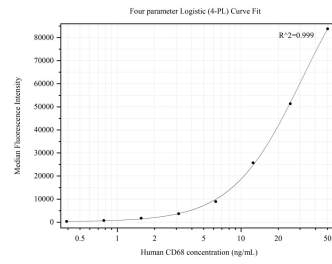
For technical support and original validation data for this product please contact:
T: 1 (888) 4PTGLAB (1-888-478-4522) (toll free in USA), or 1(312) 455-8498 (outside USA) E: proteintech@ptglab.com
W: ptglab.com

This product is exclusively available under Proteintech Group brand and is not available to purchase from any other manufacturer.

Selected Validation Data



Cytometric bead array standard curve of MP50230-1, CD68 Monoclonal Matched Antibody Pair, PBS Only. Capture antibody: 66231-1-PBS. Detection antibody: 66231-3-PBS. Standard: Ag22815. Range: 0.391-25 ng/mL



Cytometric bead array standard curve of MP50230-2, CD68 Monoclonal Matched Antibody Pair, PBS Only. Capture antibody: 66231-1-PBS. Detection antibody: 66231-4-PBS. Standard: Ag22815. Range: 0.391-50 ng/mL