

For Research Use Only

# S100A10 Monoclonal antibody, PBS Only



Catalog Number: 66227-1-PBS

## Basic Information

<b>Catalog Number:</b> 66227-1-PBS	<b>GenBank Accession Number:</b> BC015973	<b>Purification Method:</b> Protein G purification
<b>Size:</b> 100ug , Concentration: 1 mg/ml by Nanodrop;	<b>GeneID (NCBI):</b> 6281	<b>CloneNo.:</b> 1B3F9
<b>Source:</b> Mouse	<b>UNIPROT ID:</b> P60903	
<b>Isotype:</b> IgG1	<b>Full Name:</b> S100 calcium binding protein A10	
<b>Immunogen Catalog Number:</b> AG23596	<b>Calculated MW:</b> 11 kDa	
	<b>Observed MW:</b> 11 kDa	

## Applications

**Tested Applications:**  
WB, IF, IHC, Indirect ELISA

**Species Specificity:**  
human

## Background Information

S100A10, also known as p11, is a member of the S100 family of small, EF hand containing dimeric proteins. S100 proteins are localized in the cytoplasm and/or nucleus of a wide range of cells, and involved in the regulation of a number of cellular processes such as cell cycle progression and differentiation. S100A10 is present on the surface of endothelial and other cells in a heterotetrameric complex with another Ca(2+)-binding protein, annexin II. S100A10 may function in exocytosis and endocytosis.

## Storage

**Storage:**  
Store at -80°C.

**Storage Buffer:**  
PBS Only

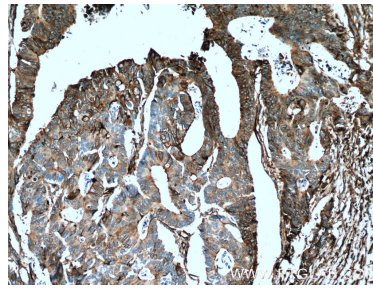
For technical support and original validation data for this product please contact:  
T: 1 (888) 4PTGLAB (1-888-478-4522) (toll free in USA), or 1(312) 455-8498 (outside USA)      E: proteintech@ptglab.com  
W: ptglab.com

**This product is exclusively available under Proteintech Group brand and is not available to purchase from any other manufacturer.**

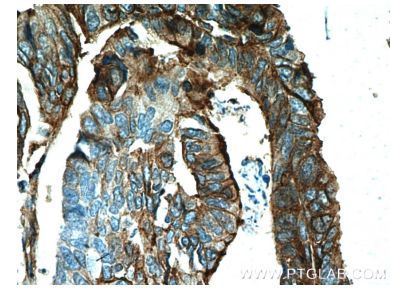
## Selected Validation Data



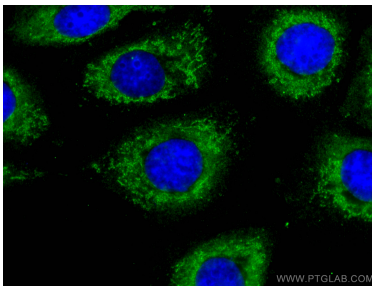
human lung tissue were subjected to SDS PAGE followed by western blot with 66227-1-Ig (S100A10 Antibody) at dilution of 1:2000 incubated at room temperature for 1.5 hours. This data was developed using the same antibody clone with 66227-1-PBS in a different storage buffer formulation.



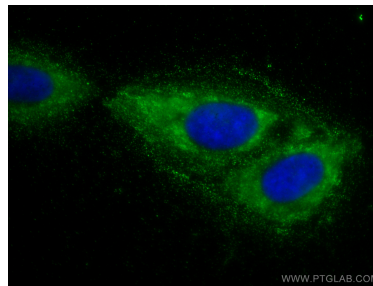
Immunohistochemical analysis of paraffin-embedded human colon cancer tissue slide using 66227-1-Ig (S100A10 Antibody) at dilution of 1:200 (under 10x lens). Heat mediated antigen retrieval with Tris-EDTA buffer (pH 9.0). This data was developed using the same antibody clone with 66227-1-PBS in a different storage buffer formulation.



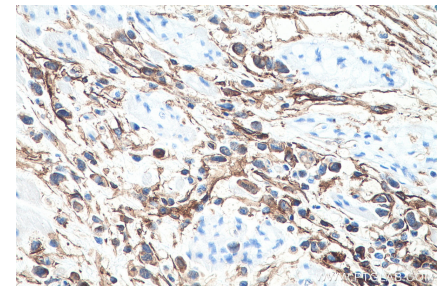
Immunohistochemical analysis of paraffin-embedded human colon cancer tissue slide using 66227-1-Ig (S100A10 Antibody) at dilution of 1:200 (under 40x lens). Heat mediated antigen retrieval with Tris-EDTA buffer (pH 9.0). This data was developed using the same antibody clone with 66227-1-PBS in a different storage buffer formulation.



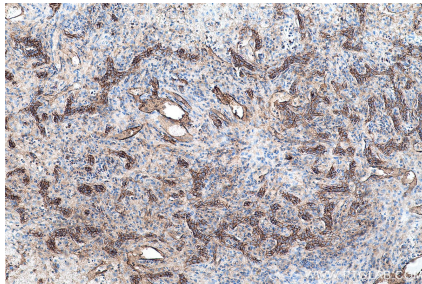
Immunofluorescent analysis of (4% PFA) fixed A431 cells using S100A10 antibody (66227-1-Ig, Clone: 1B3F9) at dilution of 1:400 and CoraLite®488-Conjugated AffiniPure Goat Anti-Mouse IgG(H+L). This data was developed using the same antibody clone with 66227-1-PBS in a different storage buffer formulation.



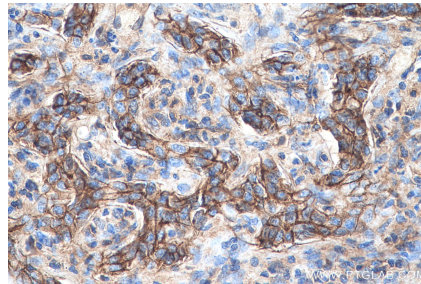
Immunofluorescent analysis of (-20°C Methanol) fixed Saos-2 cells using S100A10 antibody (66227-1-Ig, Clone: 1B3F9) at dilution of 1:800 and CoraLite®488-Conjugated AffiniPure Goat Anti-Mouse IgG(H+L). This data was developed using the same antibody clone with 66227-1-PBS in a different storage buffer formulation.



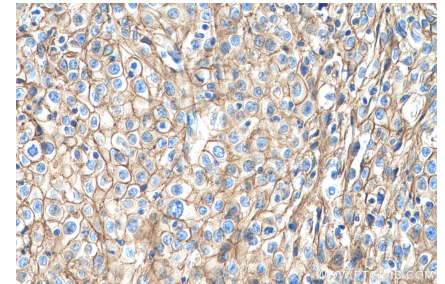
Immunohistochemical analysis of paraffin-embedded human stomach cancer tissue slide using 66227-1-Ig (S100A10 antibody) at dilution of 1:4000 (under 40x lens). Heat mediated antigen retrieval with Tris-EDTA buffer (pH 9.0). This data was developed using the same antibody clone with 66227-1-PBS in a different storage buffer formulation.



Immunohistochemical analysis of paraffin-embedded human liver cancer tissue slide using 66227-1-Ig (S100A10 antibody) at dilution of 1:4000 (under 10x lens). Heat mediated antigen retrieval with Tris-EDTA buffer (pH 9.0). This data was developed using the same antibody clone with 66227-1-PBS in a different storage buffer formulation.



Immunohistochemical analysis of paraffin-embedded human liver cancer tissue slide using 66227-1-Ig (S100A10 antibody) at dilution of 1:4000 (under 40x lens). Heat mediated antigen retrieval with Tris-EDTA buffer (pH 9.0). This data was developed using the same antibody clone with 66227-1-PBS in a different storage buffer formulation.



Immunohistochemical analysis of paraffin-embedded human cervical cancer tissue slide using 66227-1-Ig (S100A10 antibody) at dilution of 1:4000 (under 40x lens). Heat mediated antigen retrieval with Tris-EDTA buffer (pH 9.0). This data was developed using the same antibody clone with 66227-1-PBS in a different storage buffer formulation.



Immunohistochemical analysis of paraffin-embedded human cervical cancer tissue slide using 66227-1-Ig (S100A10 antibody) at dilution of 1:4000 (under 40x lens). Heat mediated antigen retrieval with Tris-EDTA buffer (pH 9.0). This data was developed using the same antibody clone with 66227-1-PBS in a different storage buffer formulation.

