

For Research Use Only

# ORAI1 Monoclonal antibody, PBS Only



Catalog Number: 66223-1-PBS

## Basic Information

<b>Catalog Number:</b> 66223-1-PBS	<b>GenBank Accession Number:</b> BC015369	<b>Purification Method:</b> Protein A purification
<b>Size:</b> 100ug , Concentration: 1 mg/ml by Nanodrop;	<b>GeneID (NCBI):</b> 84876	<b>CloneNo.:</b> 3C12F9
<b>Source:</b> Mouse	<b>UNIPROT ID:</b> Q96D31	
<b>Isotype:</b> IgG2a	<b>Full Name:</b> ORAI calcium release-activated calcium modulator 1	
<b>Immunogen Catalog Number:</b> AG18050	<b>Calculated MW:</b> 301 aa, 33 kDa	
	<b>Observed MW:</b> 32 kDa	

## Applications

**Tested Applications:**  
WB, IF, Indirect ELISA

**Species Specificity:**  
human, mouse, rat, pig

## Background Information

Store-operated calcium channels (SOCs) play essential functions in various physiological processes. Orai1 (also named CRACM1) is a critical molecular component of SOC. Orai1 protein is a 32-55 kDa plasma membrane protein with 4 transmembrane domains. Human patients with a severe combined immunodeficiency (SCID) syndrome possess point mutations in Orai1 gene.

## Storage

**Storage:**  
Store at -80°C.

**Storage Buffer:**  
PBS Only

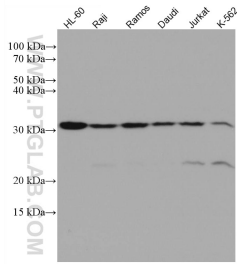
For technical support and original validation data for this product please contact:

T: 1 (888) 4PTGLAB (1-888-478-4522) (toll free in USA), or 1(312) 455-8498 (outside USA)

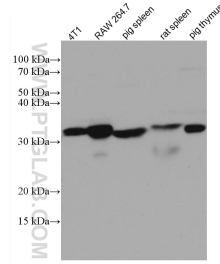
E: [proteintech@ptglab.com](mailto:proteintech@ptglab.com)  
W: [ptglab.com](http://ptglab.com)

**This product is exclusively available under Proteintech Group brand and is not available to purchase from any other manufacturer.**

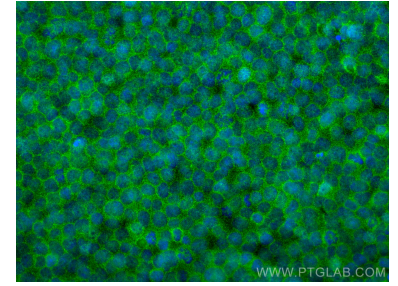
## Selected Validation Data



Various lysates were subjected to SDS PAGE followed by western blot with 66223-1-Ig (ORAI1 antibody) at dilution of 1:20000 incubated at room temperature for 1.5 hours. This data was developed using the same antibody clone with 66223-1-PBS in a different storage buffer formulation.



Various lysates were subjected to SDS PAGE followed by western blot with 66223-1-Ig (ORAI1 antibody) at dilution of 1:20000 incubated at room temperature for 1.5 hours. This data was developed using the same antibody clone with 66223-1-PBS in a different storage buffer formulation.



Immunofluorescent analysis of (4% PFA) fixed Jurkat cells using ORAI1 antibody (66223-1-Ig, Clone: 3C12F9) at dilution of 1:800 and CoraLite®488-Conjugated AffiniPure Goat Anti-Mouse IgG(H+L). This data was developed using the same antibody clone with 66223-1-PBS in a different storage buffer formulation.