

For Research Use Only

Alpha E-Catenin Monoclonal antibody, PBS Only



Catalog Number: 66221-1-PBS

Basic Information

Catalog Number: 66221-1-PBS	GenBank Accession Number: BC031262	Purification Method: Protein A purification
Size: 100ug , Concentration: 1mg/ml by Nanodrop;	GeneID (NCBI): 1495	CloneNo.: 2B7B8
Source: Mouse	UNIPROT ID: P35221	
Isotype: IgG1	Full Name: catenin (cadherin-associated protein), alpha 1, 102kDa	
Immunogen Catalog Number: AG23603	Calculated MW: 906 aa, 100 kDa	
	Observed MW: 95-100 kDa	

Applications

Tested Applications:
Indirect ELISA, IHC, WB

Species Specificity:
mouse, human

Background Information

Alpha catenin is an essential component of adherens junctions that connects E-cadherin- β -catenin complexes with the actin cytoskeleton. It also recruits a range of other important proteins to developing intercellular junctions. Three alpha catenins exist in human: alpha-E-catenin, alpha-N-catenin, and alpha-T-catenin, which share substantial amino-acid sequence similarity but have distinct tissue distribution. alpha-E-catenin is ubiquitously expressed, alpha-N-catenin is restricted to neuronal tissue, and alpha-T-catenin is primarily expressed in heart tissue. Reduced levels of alpha-E-catenin protein seem to be characteristic of many different human cancers, including malignant tumours of the breast, colon, stomach, oesophagus, bladder and liver. In addition, the loss of alpha-E-catenin often correlates with the degree of tumour differentiation and metastasis.

Storage

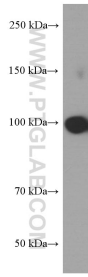
Storage:
Store at -80°C.

Storage Buffer:
PBS Only

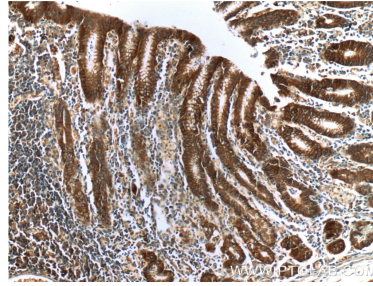
For technical support and original validation data for this product please contact:
T: 1 (888) 4PTGLAB (1-888-478-4522) (toll free in USA), or 1(312) 455-8498 (outside USA) E: proteintech@ptglab.com W: ptglab.com

This product is exclusively available under Proteintech Group brand and is not available to purchase from any other manufacturer.

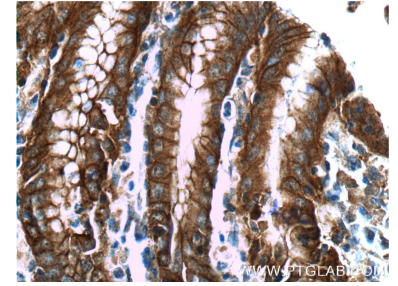
Selected Validation Data



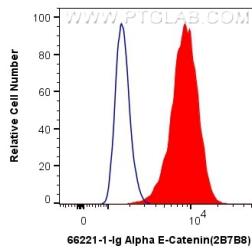
NIH/3T3 cells were subjected to SDS PAGE followed by western blot with 66221-1-Ig (Alpha E catenin antibody) at dilution of 1:1000 incubated at room temperature for 1.5 hours. This data was developed using the same antibody clone with 66221-1-PBS in a different storage buffer formulation.



Immunohistochemical analysis of paraffin-embedded human stomach tissue slide using 66221-1-Ig (Alpha E catenin antibody at dilution of 1:200 (under 10x lens). This data was developed using the same antibody clone with 66221-1-PBS in a different storage buffer formulation.



Immunohistochemical analysis of paraffin-embedded human stomach tissue slide using 66221-1-Ig (Alpha E catenin antibody at dilution of 1:200 (under 40x lens). This data was developed using the same antibody clone with 66221-1-PBS in a different storage buffer formulation.



1X10⁶ MCF-7 cells were intracellularly stained with 0.4 ug Anti-Human Alpha E-Catenin (66221-1-Ig, Clone:2B7B8) and CoraLite®488-Conjugated AffiniPure Goat Anti-Mouse IgG(H+L) at dilution 1:1000 (red), or 0.4 ug Mouse IgG1 Isotype Control (MOPC-21) (65124-1-Ig, Clone: MOPC-21) (blue). Cells were fixed with 4% PFA and permeabilized with Flow Cytometry Perm Buffer (PF00011-C). This data was developed using the same antibody clone with 66221-1-PBS in a

