

For Research Use Only

# APOD Monoclonal antibody, PBS Only



Catalog Number: 66215-1-PBS

## Basic Information

<b>Catalog Number:</b> 66215-1-PBS	<b>GenBank Accession Number:</b> BC007402	<b>Purification Method:</b> Protein A purification
<b>Size:</b> 100ug , Concentration: 1 mg/ml by Nanodrop;	<b>GeneID (NCBI):</b> 347	<b>CloneNo.:</b> 1C6D10
<b>Source:</b> Mouse	<b>UNIPROT ID:</b> P05090	
<b>Isotype:</b> IgG1	<b>Full Name:</b> apolipoprotein D	
<b>Immunogen Catalog Number:</b> AG21422	<b>Calculated MW:</b> 33 kDa	
	<b>Observed MW:</b> 30-33 kDa	

## Applications

**Tested Applications:**  
WB, IF, Indirect ELISA

**Species Specificity:**  
human

## Background Information

Apolipoprotein D (ApoD) is a member of the lipocalin superfamily of ligand transporters, and has been implicated in the transport of small hydrophobic molecules. ApoD is also a component of plasma high-density lipoproteins (HDL). Alteration of ApoD expression has been linked to multiple neurological disorders, including Alzheimer's disease.

## Storage

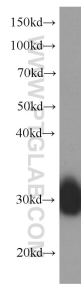
**Storage:**  
Store at -80°C.

**Storage Buffer:**  
PBS Only

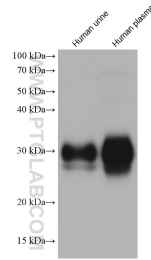
For technical support and original validation data for this product please contact:  
T: 1 (888) 4PTGLAB (1-888-478-4522) (toll free in USA), or 1(312) 455-8498 (outside USA)      E: proteintech@ptglab.com  
W: ptglab.com

This product is exclusively available under Proteintech Group brand and is not available to purchase from any other manufacturer.

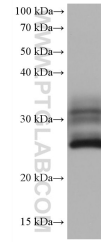
## Selected Validation Data



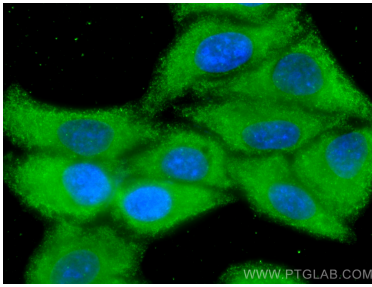
human plasma were subjected to SDS PAGE followed by western blot with 66215-1-Ig (APOD Antibody) at dilution of 1:20000 incubated at room temperature for 1.5 hours. This data was developed using the same antibody clone with 66215-1-PBS in a different storage buffer formulation.



human urine sample were subjected to SDS PAGE followed by western blot with 66215-1-Ig (APOD antibody) at dilution of 1:10000 incubated at room temperature for 1.5 hours. This data was developed using the same antibody clone with 66215-1-PBS in a different storage buffer formulation.



human placenta tissue were subjected to SDS PAGE followed by western blot with 66215-1-Ig (APOD antibody) at dilution of 1:10000 incubated at room temperature for 1.5 hours. This data was developed using the same antibody clone with 66215-1-PBS in a different storage buffer formulation.



Immunofluorescent analysis of (-20°C Methanol) fixed HepG2 cells using APOD antibody (66215-1-Ig, Clone: 1C6D10) at dilution of 1:800 and CoraLite®488-Conjugated AffiniPure Goat Anti-Mouse IgG(H+L). This data was developed using the same antibody clone with 66215-1-PBS in a different storage buffer formulation.