

For Research Use Only

# p120 Catenin Monoclonal antibody, PBS Only



Catalog Number: 66208-1-PBS

Featured Product

## Basic Information

<b>Catalog Number:</b> 66208-1-PBS	<b>GenBank Accession Number:</b> BC010501	<b>Purification Method:</b> Protein A purification
<b>Size:</b> 100ug, Concentration: 1mg/ml by Nanodrop;	<b>GeneID (NCBI):</b> 1500	<b>CloneNo.:</b> 2F7H8
<b>Source:</b> Mouse	<b>UNIPROT ID:</b> O60716	
<b>Isotype:</b> IgG2b	<b>Full Name:</b> catenin (cadherin-associated protein), delta 1	
<b>Immunogen Catalog Number:</b> AG2824	<b>Calculated MW:</b> 948 aa, 105 kDa	
	<b>Observed MW:</b> 90-120 kDa	

## Applications

**Tested Applications:**  
WB, IHC, IF/ICC, IF-Fro, Indirect ELISA

**Species Specificity:**  
human, mouse, rat

## Background Information

Catenins were discovered as proteins that are linked to the cytoplasmic domain of transmembrane cadherins (PMID: 9653641). p120 catenin, also called p120 ctn or catenin delta-1, regulates cell-cell adhesion through its interaction with the cytoplasmic tail of classical and type II cadherins. p120 catenin is a tyrosine kinase substrate implicated in cell transformation by SRC, as well as in ligand-induced receptor signaling through the EGF receptor, the PDGF receptor, and the CSF1 receptor. Different expression patterns of p120 catenin in lobular and ductal carcinomas of breast have been reported: membrane stain for ductal carcinoma and cytoplasmic stain for lobular carcinoma (PMID: 24966968). Different isoforms of p120 catenin are variably expressed in different tissues as a result of alternative splicing and the use of multiple translation initiation codons (PMID: 19150613).

## Storage

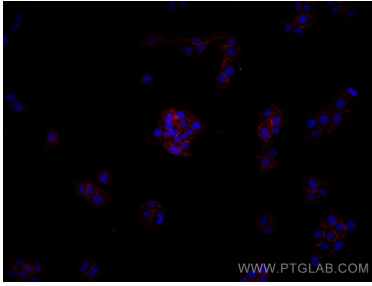
**Storage:**  
Store at -80°C.

**Storage Buffer:**  
PBS Only

For technical support and original validation data for this product please contact:  
T: 1 (888) 4PTGLAB (1-888-478-4522) (toll free in USA), or 1(312) 455-8498 (outside USA)      E: proteintech@ptglab.com  
W: ptglab.com

This product is exclusively available under Proteintech Group brand and is not available to purchase from any other manufacturer.

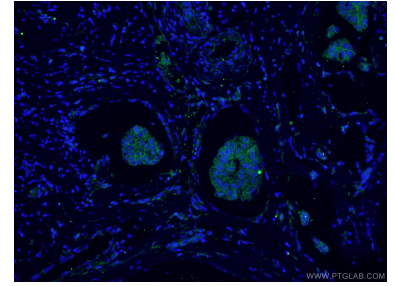
## Selected Validation Data



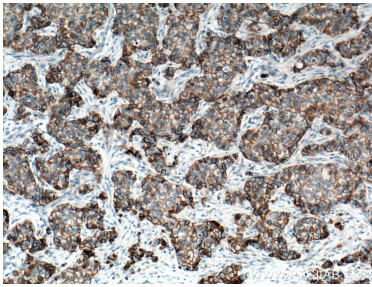
Immunofluorescent analysis of (4% PFA) fixed A431 cells using p120 Catenin antibody (66208-1-Ig, Clone: 2F7H8) at dilution of 1:800 and Multi-rAb CoraLite® Plus 594-Goat Anti-Mouse Recombinant Secondary Antibody (H+L) (Cat.NO. RGAM004). This data was developed using the same antibody clone with 66208-1-PBS in a different storage buffer formulation.



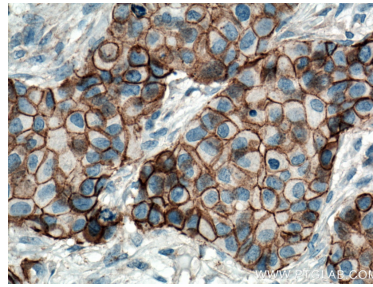
fetal human brain tissue were subjected to SDS PAGE followed by western blot with 66208-1-Ig (p120 Catenin antibody at dilution of 1:1000 incubated at room temperature for 1.5 hours. This data was developed using the same antibody clone with 66208-1-PBS in a different storage buffer formulation.



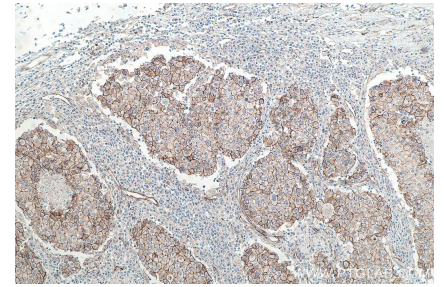
Immunofluorescent analysis of (4% PFA) fixed human breast cancer tissue using 66208-1-Ig (p120 Catenin antibody) at dilution of 1:100 and Alexa Fluor 488-conjugated AffiniPure Goat Anti-Mouse IgG(H+L). This data was developed using the same antibody clone with 66208-1-PBS in a different storage buffer formulation.



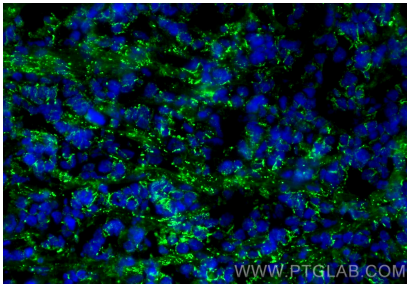
Immunohistochemical analysis of paraffin-embedded human breast cancer tissue slide using 66208-1-Ig (p120 Catenin antibody) at dilution of 1:500 (under 10x lens. Heat mediated antigen retrieval with Tris-EDTA buffer (pH 9.0). This data was developed using the same antibody clone with 66208-1-PBS in a different storage buffer formulation.



Immunohistochemical analysis of paraffin-embedded human breast cancer tissue slide using 66208-1-Ig (p120 Catenin antibody) at dilution of 1:500 (under 40x lens. Heat mediated antigen retrieval with Tris-EDTA buffer (pH 9.0). This data was developed using the same antibody clone with 66208-1-PBS in a different storage buffer formulation.



Immunohistochemical analysis of paraffin-embedded human breast cancer tissue slide using 66208-1-Ig (p120 Catenin antibody) at dilution of 1:5000 (under 10x lens). Heat mediated antigen retrieval with Tris-EDTA buffer (pH 9.0). This data was developed using the same antibody clone with 66208-1-PBS in a different storage buffer formulation.



Immunofluorescent analysis of un-fixed frozen OCT-embedded mouse breast cancer using p120 Catenin antibody (66208-1-Ig, Clone: 2F7H8) at dilution of 1:400 and CoraLite®488-Conjugated Goat Anti-Mouse IgG(H+L) (SA00013-1). This data was developed using the same antibody clone with 66208-1-PBS in a different storage buffer formulation.