

For Research Use Only

# Myoglobin Monoclonal antibody, PBS Only



Catalog Number: 66205-1-PBS

## Basic Information

<b>Catalog Number:</b> 66205-1-PBS	<b>GenBank Accession Number:</b> BC014547	<b>Purification Method:</b> Protein A purification
<b>Size:</b> 100ug , Concentration: 1mg/ml by Nanodrop;	<b>GeneID (NCBI):</b> 4151	<b>CloneNo.:</b> 1A4F7
<b>Source:</b> Mouse	<b>UNIPROT ID:</b> P02144	
<b>Isotype:</b> IgG1	<b>Full Name:</b> myoglobin	
<b>Immunogen Catalog Number:</b> AG8979	<b>Calculated MW:</b> 154 aa, 17 kDa	
	<b>Observed MW:</b> 17-18 kDa	

## Applications

**Tested Applications:**  
Indirect ELISA, IHC, WB

**Species Specificity:**  
rabbit, pig, rat, mouse, human

## Background Information

Myoglobin is a cytoplasmic hemoprotein that is expressed primarily in cardiomyocytes and oxidative skeletal muscle fibers, functioning on facilitating oxygen transport and modulating nitric oxide homeostasis within cardiac and skeletal myocytes. Recent studies indicated that myoglobin was also expressed in non-muscle tissues. This antibody well recognized endogenous myoglobin in muscle lysates.

## Storage

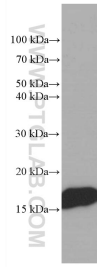
**Storage:**  
Store at -80°C.

**Storage Buffer:**  
PBS Only

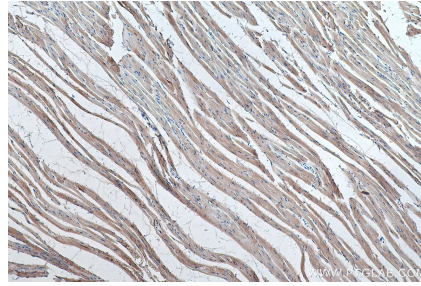
For technical support and original validation data for this product please contact:  
T: 1 (888) 4PTGLAB (1-888-478-4522) (toll free in USA), or 1(312) 455-8498 (outside USA)      E: proteintech@ptglab.com  
W: ptglab.com

This product is exclusively available under Proteintech Group brand and is not available to purchase from any other manufacturer.

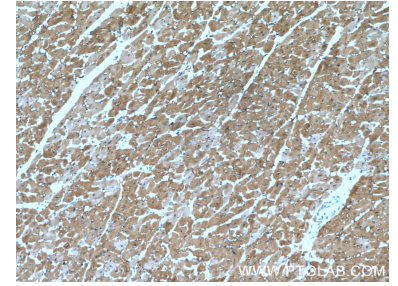
## Selected Validation Data



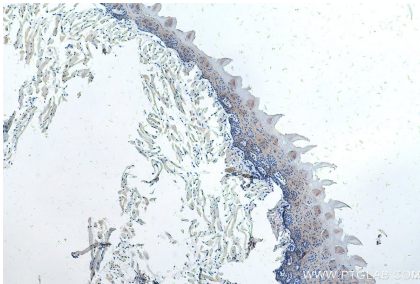
human skeletal muscle tissue were subjected to SDS PAGE followed by western blot with 66205-1-Ig (Myoglobin antibody at dilution of 1:50000 incubated at room temperature for 1.5 hours. This data was developed using the same antibody clone with 66205-1-PBS in a different storage buffer formulation.



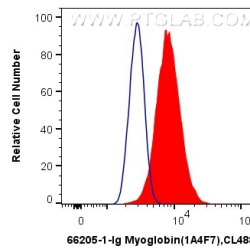
Immunohistochemical analysis of paraffin-embedded rat heart tissue slide using 66205-1-Ig (Myoglobin antibody) at dilution of 1:8000 (under 10x lens). Heat mediated antigen retrieval with Tris-EDTA buffer (pH 9.0). This data was developed using the same antibody clone with 66205-1-PBS in a different storage buffer formulation.



Immunohistochemical analysis of paraffin-embedded human heart tissue slide using 66205-1-Ig (Myoglobin antibody at dilution of 1:200 (under 10x lens). This data was developed using the same antibody clone with 66205-1-PBS in a different storage buffer formulation.



Immunohistochemical analysis of paraffin-embedded mouse tongue tissue slide using 66205-1-Ig (Myoglobin antibody) at dilution of 1:8000 (under 10x lens). Heat mediated antigen retrieval with Tris-EDTA buffer (pH 9.0). This data was developed using the same antibody clone with 66205-1-PBS in a different storage buffer formulation.



1X10<sup>6</sup> C2C12 cells were intracellularly stained with 0.4 ug Anti-Human Myoglobin (66205-1-Ig, Clone:1A4F7) and CoraLite@488-Conjugated AffiniPure Goat Anti-Mouse IgG(H+L) at dilution 1:1000 (red), or 0.4 ug Control Antibody. Cells were fixed with 4% PFA and permeabilized with Flow Cytometry Perm Buffer (PF00011-C). This data was developed using the same antibody clone with 66205-1-PBS in a different storage buffer formulation.