

For Research Use Only

# MCM2 Monoclonal antibody, PBS Only

Catalog Number: 66204-1-PBS

Featured Product



## Basic Information

Catalog Number:

66204-1-PBS

Size:

100ug, Concentration: 1mg/ml by Nanodrop;

Source:

Mouse

Isotype:

IgG1

Immunogen Catalog Number:

AG0798

GenBank Accession Number:

BC007670

GeneID (NCBI):

4171

UNIPROT ID:

P49736

Full Name:

minichromosome maintenance complex component 2

Calculated MW:

102 kDa

Observed MW:

120-125 kDa

Purification Method:

Protein G purification

CloneNo.:

1F4D10

## Applications

Tested Applications:

WB, IHC, IF/ICC, Indirect ELISA

Species Specificity:

human, mouse, rat

## Storage

Storage:

Store at -80°C.

Storage Buffer:

PBS Only

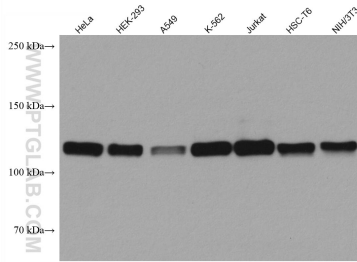
For technical support and original validation data for this product please contact:

T: 1 (888) 4PTGLAB (1-888-478-4522) (toll free in USA), or 1(312) 455-8498 (outside USA)

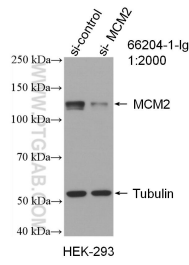
E: [proteintech@ptglab.com](mailto:proteintech@ptglab.com)  
W: [ptglab.com](http://ptglab.com)

This product is exclusively available under Proteintech Group brand and is not available to purchase from any other manufacturer.

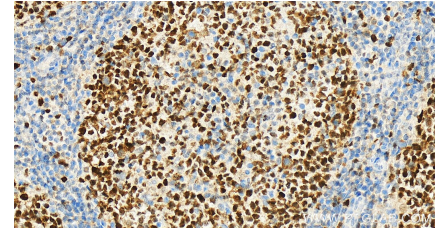
## Selected Validation Data



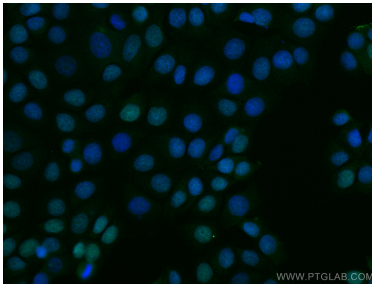
Various lysates were subjected to SDS PAGE followed by western blot with 66204-1-Ig (MCM2 antibody) at dilution of 1:10000 incubated at room temperature for 1.5 hours. This data was developed using the same antibody clone with 66204-1-PBS in a different storage buffer formulation.



WB result of MCM2 antibody (66204-1-Ig; 1:2000; incubated at room temperature for 1.5 hours) with sh-Control and sh-MCM2 transfected HEK-293 cells. This data was developed using the same antibody clone with 66204-1-PBS in a different storage buffer formulation.



Immunohistochemical analysis of paraffin-embedded Human tonsillitis tissue slide using 66204-1-Ig (MCM2 antibody) at dilution of 1:2000 (under 20x lens). This data was developed using the same antibody clone with 66204-1-PBS in a different storage buffer formulation.



Immunofluorescent analysis of (4% PFA) fixed MCF-7 cells using MCM2 antibody (66204-1-Ig, Clone: 1F4D10) at dilution of 1:400 and CoraLite@488-Conjugated AffiniPure Goat Anti-Mouse IgG(H+L). This data was developed using the same antibody clone with 66204-1-PBS in a different storage buffer formulation.