

For Research Use Only

INS Monoclonal antibody, PBS Only

Catalog Number: 66198-1-PBS



Basic Information

Catalog Number: 66198-1-PBS	GenBank Accession Number: BC005255	Purification Method: Protein A purification
Size: 100ug, Concentration: 1 mg/ml by Nanodrop;	GeneID (NCBI): 3630	CloneNo.: 4B6A7
Source: Mouse	UNIPROT ID: P01308	
Isotype: IgG2a	Full Name: INS	
Immunogen Catalog Number: AG8630	Calculated MW: 110 aa, 12 kDa	

Applications

Tested Applications:
IF, IHC, Indirect ELISA

Species Specificity:
human, mouse, rat

Background Information

INS is a peptide hormone, produced by beta cells of the pancreas, and is central to regulating carbohydrate and fat metabolism in the body. It participates in glucose utilization, protein synthesis and in the formation and storage of neutral lipids. INS is synthesized as a precursor molecule, pro-INS, which is processed prior to secretion. A- and B-peptides are joined together by a disulfide bond to form INS, while the central portion of the precursor molecule is cleaved and released as the C-peptide. Defects in INS results in type 1 diabetes mellitus. INS may also exist 36 kDa form corresponding to the hexameric INS form.

Storage

Storage:
Store at -80°C.

Storage Buffer:
PBS Only

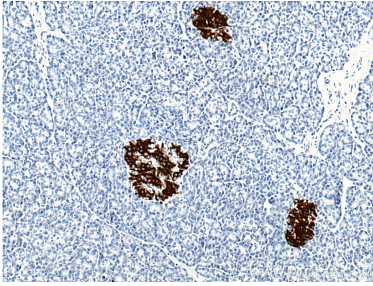
For technical support and original validation data for this product please contact:

T: 1 (888) 4PTGLAB (1-888-478-4522) (toll free in USA), or 1(312) 455-8498 (outside USA)

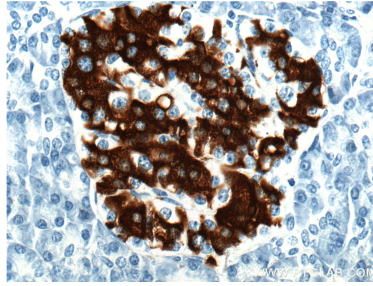
E: proteintech@ptglab.com
W: ptglab.com

This product is exclusively available under Proteintech Group brand and is not available to purchase from any other manufacturer.

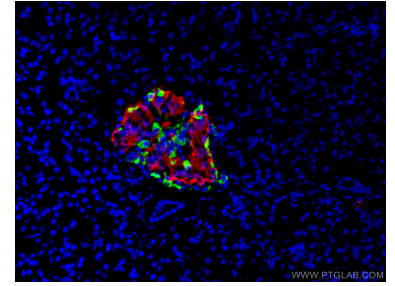
Selected Validation Data



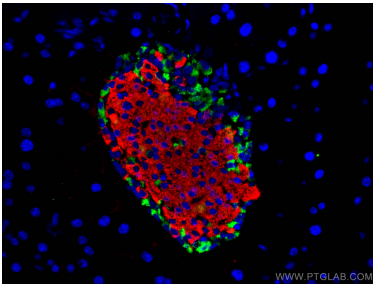
Immunohistochemical analysis of paraffin-embedded human pancreas tissue slide using 66198-1-Ig (Insulin Antibody) at dilution of 1:5000 (under 10x lens). This data was developed using the same antibody clone with 66198-1-PBS in a different storage buffer formulation.



Immunohistochemical analysis of paraffin-embedded human pancreas tissue slide using 66198-1-Ig (Insulin Antibody) at dilution of 1:5000 (under 40x lens). This data was developed using the same antibody clone with 66198-1-PBS in a different storage buffer formulation.



Immunofluorescent analysis of (4% PFA) fixed human pancreas tissue using 66198-1-Ig (Insulin antibody) at dilution of 1:100 and CoraLite594-Conjugated AffiniPure Goat Anti-Mouse IgG(H+L). The α cells of pancreas was labelled in green with 15954-1-AP (Glucagon antibody). This data was developed using the same antibody clone with 66198-1-PBS in a different storage buffer formulation.



Immunofluorescent analysis of (4% PFA) fixed mouse pancreas tissue using INS antibody (66198-1-Ig, Clone: 4B6A7) at dilution of 1:400 and CoraLite®594-Conjugated AffiniPure Goat Anti-Mouse IgG(H+L), Somatostatin antibody (24496-1-AP, green). This data was developed using the same antibody clone with 66198-1-PBS in a different storage buffer formulation.