

For Research Use Only

INS Monoclonal antibody

Catalog Number: 66198-1-Ig 34 Publications



Basic Information

Catalog Number:	GenBank Accession Number:	Purification Method:
66198-1-Ig	BC005255	Protein A purification
Size:	GeneID (NCBI):	CloneNo.:
150ul , Concentration: 1000 µg/ml by Nanodrop and 538 µg/ml by Bradford method using BSA as the standard;	3630	4B6A7
Source:	Full Name:	Recommended Dilutions:
Mouse	INS	IHC 1:1000-1:10000
Isotype:	Calculated MW:	IF 1:50-1:500
IgG2a	110 aa, 12 kDa	
Immunogen Catalog Number:		
AG8630		

Applications

Tested Applications:	Positive Controls:
IF, IHC, ELISA	IHC : human pancreas tissue, mouse pancreas tissue, rat pancreas tissue
Cited Applications:	IF : human pancreas tissue, mouse pancreas tissue
Cell treatment, IF, IHC, WB	
Species Specificity:	
human, mouse, rat	
Cited Species:	
human, rat, mouse	
Note-IHC: suggested antigen retrieval with TE buffer pH 9.0; (*) Alternatively, antigen retrieval may be performed with citrate buffer pH 6.0	

Background Information

INS is a peptide hormone, produced by beta cells of the pancreas, and is central to regulating carbohydrate and fat metabolism in the body. It participates in glucose utilization, protein synthesis and in the formation and storage of neutral lipids. INS is synthesized as a precursor molecule, pro-INS, which is processed prior to secretion. A- and B-peptides are joined together by a disulfide bond to form INS, while the central portion of the precursor molecule is cleaved and released as the C-peptide. Defects in INS results in type 1 diabetes mellitus. INS may also exist 36 kDa form corresponding to the hexameric INS form.

Notable Publications

Author	Pubmed ID	Journal	Application
Haocun Kong	36125960	J Agric Food Chem	IF
Shiyao Zhang	34555719	Ecotoxicol Environ Saf	IF
Zixuan Gao	36103628	Am J Physiol Endocrinol Metab	IF

Storage

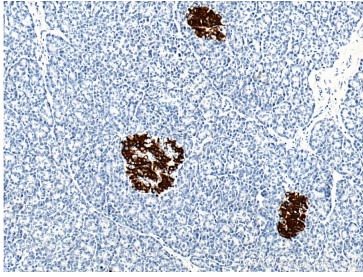
Storage:
Store at -20°C. Stable for one year after shipment.
Storage Buffer:
PBS with 0.02% sodium azide and 50% glycerol pH 7.3.
Aliquoting is unnecessary for -20°C storage

*** 20ul sizes contain 0.1% BSA

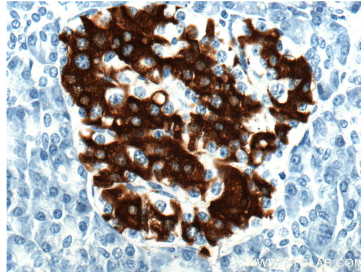
For technical support and original validation data for this product please contact:
T: 1 (888) 4PTGLAB (1-888-478-4522) (toll free in USA), or 1(312) 455-8498 (outside USA)
E: proteintech@ptglab.com
W: ptglab.com

This product is exclusively available under Proteintech Group brand and is not available to purchase from any other manufacturer.

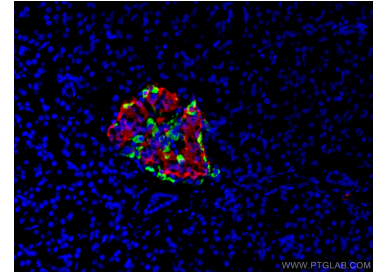
Selected Validation Data



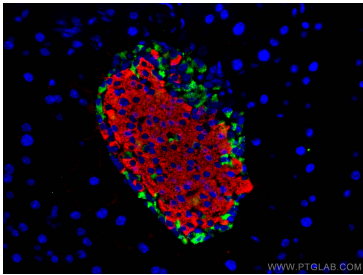
Immunohistochemical analysis of paraffin-embedded human pancreas tissue slide using 66198-1-Ig (Insulin Antibody) at dilution of 1:5000 (under 10x lens).



Immunohistochemical analysis of paraffin-embedded human pancreas tissue slide using 66198-1-Ig (Insulin Antibody) at dilution of 1:5000 (under 40x lens).



Immunofluorescent analysis of (4% PFA) fixed human pancreas tissue using 66198-1-Ig (Insulin antibody) at dilution of 1:100 and CoraLite594-Conjugated AffiniPure Goat Anti-Mouse IgG(H+L). The α cells of pancreas was labelled in green with 15954-1-AP (Glucagon antibody).



Immunofluorescent analysis of (4% PFA) fixed mouse pancreas tissue using INS antibody (66198-1-Ig, Clone: 4B6A7) at dilution of 1:400 and CoraLite®594-Conjugated AffiniPure Goat Anti-Mouse IgG(H+L), Somatostatin antibody (24496-1-AP, green).