

For Research Use Only

# ERK1/2 Monoclonal antibody, PBS Only



Catalog Number: 66192-1-PBS

## Basic Information

<b>Catalog Number:</b> 66192-1-PBS	<b>GenBank Accession Number:</b> BC013992	<b>Purification Method:</b> Protein G purification
<b>Size:</b> 100ug , Concentration: 1 mg/ml by Nanodrop;	<b>GeneID (NCBI):</b> 5595	<b>CloneNo.:</b> 4G8A11
<b>Source:</b> Mouse	<b>UNIPROT ID:</b> P27361	
<b>Isotype:</b> IgG1	<b>Full Name:</b> mitogen-activated protein kinase 3	
<b>Immunogen Catalog Number:</b> AG20350	<b>Calculated MW:</b> 43 kDa	
	<b>Observed MW:</b> 38-44 kDa	

## Applications

**Tested Applications:**  
WB, IF, IHC, Indirect ELISA

**Species Specificity:**  
human, mouse

## Background Information

ERK1 and ERK2 belongs to the protein kinase superfamily. It is involved in both the initiation and regulation of meiosis, mitosis, and postmitotic functions in differentiated cells by phosphorylating a number of transcription factors such as ELK-1. ERK1/2 catalized the reaction: ATP + a protein = ADP + a phosphoprotein. It is activated by tyrosine phosphorylation in response to INS and NGF. This antibody can recognize both ERK1 and ERK2 with the molecular mass of 38-44 kDa.

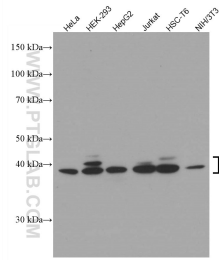
## Storage

**Storage:**  
Store at -80°C.  
**Storage Buffer:**  
PBS Only

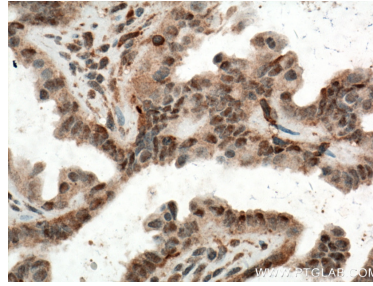
For technical support and original validation data for this product please contact:  
T: 1 (888) 4PTGLAB (1-888-478-4522) (toll free in USA), or 1(312) 455-8498 (outside USA)      E: proteintech@ptglab.com  
W: ptglab.com

This product is exclusively available under Proteintech Group brand and is not available to purchase from any other manufacturer.

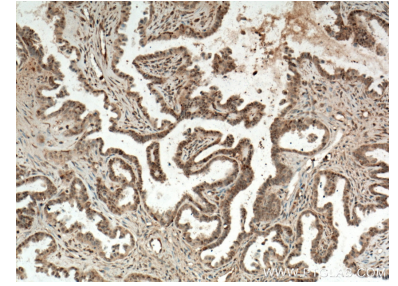
## Selected Validation Data



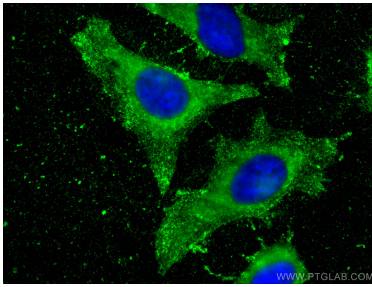
Various lysates were subjected to SDS PAGE followed by western blot with 66192-1-Ig (ERK1/2 antibody) at dilution of 1:10000 incubated at room temperature for 1.5 hours. This data was developed using the same antibody clone with 66192-1-PBS in a different storage buffer formulation.



Immunohistochemical analysis of paraffin-embedded human ovary tumor tissue slide using 66192-1-Ig (ERK1/2 antibody) at dilution of 1:4000 (under 40x lens. Heat mediated antigen retrieval with Tris-EDTA buffer (pH 9.0). This data was developed using the same antibody clone with 66192-1-PBS in a different storage buffer formulation.



Immunohistochemical analysis of paraffin-embedded human ovary tumor tissue slide using 66192-1-Ig (ERK1/2 antibody) at dilution of 1:4000 (under 10x lens. Heat mediated antigen retrieval with Tris-EDTA buffer (pH 9.0). This data was developed using the same antibody clone with 66192-1-PBS in a different storage buffer formulation.



Immunofluorescent analysis of (-20°C Methanol) fixed HeLa cells using ERK1/2 antibody (66192-1-Ig, Clone: 4G8A11) at dilution of 1:400 and CoraLite®488-Conjugated AffiniPure Goat Anti-Mouse IgG(H+L). This data was developed using the same antibody clone with 66192-1-PBS in a different storage buffer formulation.