

For Research Use Only

KLF15 Monoclonal antibody, PBS Only



Catalog Number: 66185-1-PBS

Featured Product

Basic Information

Catalog Number:

66185-1-PBS

Size:

100ug, Concentration: 1mg/ml by Nanodrop;

Source:

Mouse

Isotype:

IgM

Immunogen Catalog Number:

AG4864

GenBank Accession Number:

BC036733

GeneID (NCBI):

28999

UNIPROT ID:

Q9UIH9

Full Name:

Kruppel-like factor 15

Calculated MW:

416 aa, 44 kDa

Observed MW:

44 kDa

Purification Method:

Protein A purification

CloneNo.:

2B8G9

Applications

Tested Applications:

WB, IF, ELISA

Species Specificity:

human

Background Information

KLF15, a kidney-enriched Krüppel-like zinc finger-containing transcription factors, is a transcriptional activator that binds the CLCNKA promoter. The nuclear protein KLF 15, is expressed primarily in liver, heart, skeletal muscle and kidney tissues but is not detected in lymphoid tissues or bone marrow. It is an important regulator of GLUT4 in both adipose and muscle tissues.(PMID:10982849,PMID:16615998).

Storage

Storage:

Store at -80°C.

Storage Buffer:

PBS Only

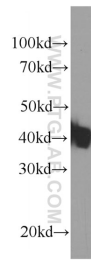
For technical support and original validation data for this product please contact:

T: 1 (888) 4PTGLAB (1-888-478-4522) (toll free in USA), or 1(312) 455-8498 (outside USA)

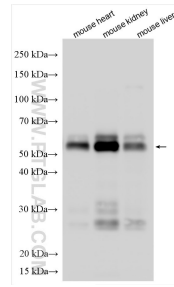
E: proteintech@ptglab.com
W: ptglab.com

This product is exclusively available under Proteintech Group brand and is not available to purchase from any other manufacturer.

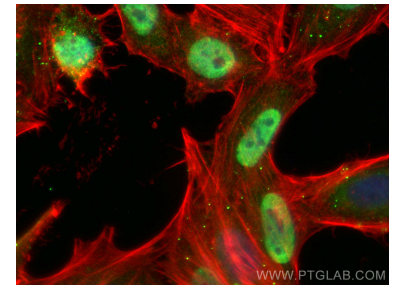
Selected Validation Data



human skeletal muscle tissue were subjected to SDS PAGE followed by western blot with 66185-1-Ig (KLF15 Antibody) at dilution of 1:2000 incubated at room temperature for 1.5 hours. This data was developed using the same antibody clone with 66185-1-PBS in a different storage buffer formulation.



Various lysates were subjected to SDS PAGE followed by western blot with 66185-1-Ig (KLF15 antibody) at dilution of 1:1500 incubated at room temperature for 1.5 hours. This data was developed using the same antibody clone with 66185-1-PBS in a different storage buffer formulation.



Immunofluorescent analysis of (4% PFA) fixed HepG2 cells using KLF15 antibody (66185-1-Ig, Clone: 2B8G9) at dilution of 1:400 and CoraLite®488-Conjugated AffiniPure Goat Anti-Mouse IgG(H+L) (SA00013-1), CL594-phalloidin (red). This data was developed using the same antibody clone with 66185-1-PBS in a different storage buffer formulation.